

HAAS AUTOMATION, INC.

COMPLETE COBOT KIT FOR UNDER \$30K

when purchased with
a Haas CNC machine



HC10 Machine Ready Complete Cobot Cell Kit
Part #:08-1940
HC10 MACHINE READY KIT
Price: \$29,999⁹⁵



Haas HC10 Cobot Kit HIGHLIGHTS:

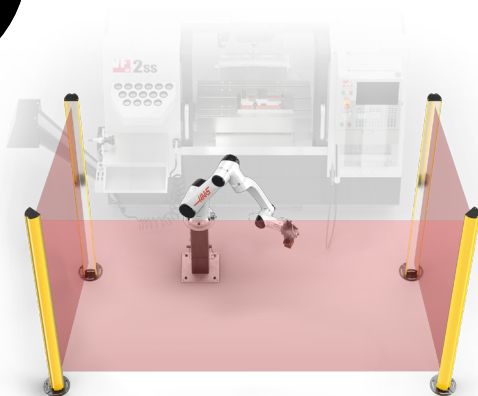
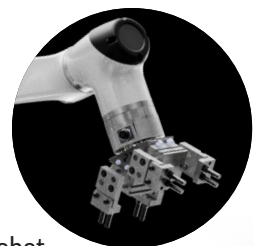


The Complete Haas Cobot Kit

The Haas HC10 is a fully integrated, plug-and-play, 10 kg capacity collaborative robot for Haas machines. The system is controlled entirely from the Haas control when connected to the machine's electrical interface box. Includes: 6-axis cobot, software interface for direct control through the Haas machine, teach pendant and cobot controller, safety light curtain, and all necessary electrical hardware to interface directly with the Haas control.

Dual Pneumatic Grippers

The Dual Grippers allow the cobot to pick up raw stock with one gripper and offload a finished part with the other, decreasing machine idle time. Having the cobot complete the process while the machine is running increases productivity and reduces overall cycle time.

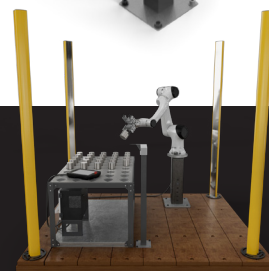


Additional Safeguarding

For added safety, this kit features a 2-meter-tall, 3-sided light curtain system, and all necessary mounting hardware and cables for installation. The cobot and machine will run as normal, unless the light curtain is broken by an object or person. If the light curtain is broken, the cobot will stop operation, while the machine continues to finish its cycle.

Part Flip Station

A part flip station adjacent to the parts table provides a convenient location for the cobot to place parts and then regrip (flip) them for machining the other side, to simplify 2nd-op automation.



Adjustable Pedestal

Easily and quickly adjust the height of the cobot for better reach, depending on your application. The kit includes a sturdy telescoping stand capable of extending to 36", or collapsing to 24".



36" ▶
30" ▶
24" ▶

ADJUSTABLE



ALL OF THIS FOR UNDER **\$30K!**
when purchased with a new Haas machine.

Part Table and Templates

The heavy-duty 48" x 31.5" parts table provides plenty of space for staging raw material and finished parts. The accurate grid pattern and solid hard stops of the included templates ensure repeatable part locations, and reduce misloads.



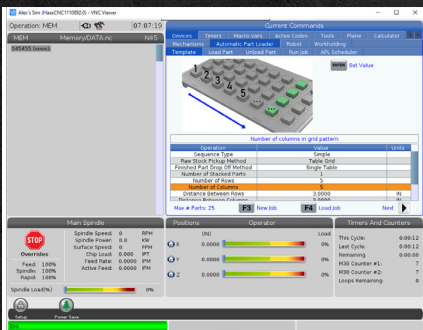
Mounting Base

Quickly and easily mount all necessary components to the provided 101" x 72" wood pallet. The pallet allows for easier mounting and remounting than a traditional steel platform. Also, the newly configured cobot cell workstation can be moved from machine to machine, if desired.

PROGRAMMING AND SET UP ARE EASY.

FULLY INTEGRATED WITH THE HAAS CONTROL!

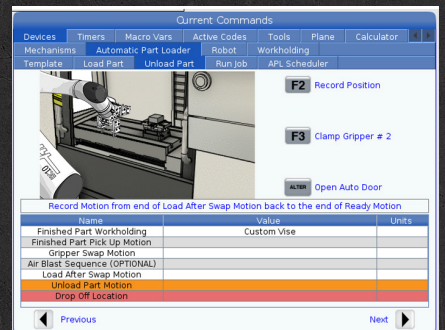
1. SET UP RAW MATERIAL



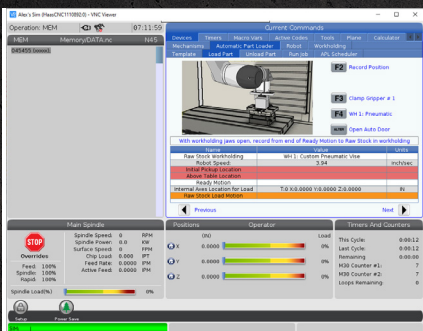
2. SET MATERIAL PICKUP



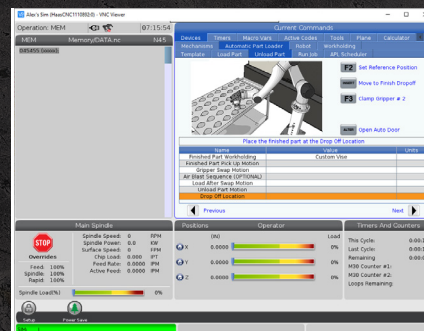
3. SELECT WORKHOLDING



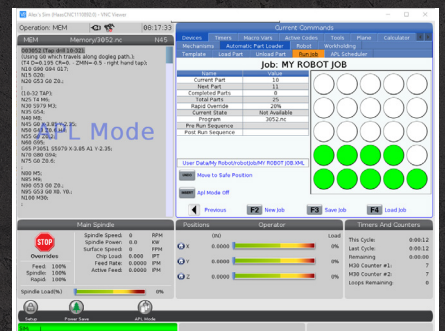
4. SET LOAD POSITION



5. SET PART DROP OFF



6. RUN THE PARTS!



DON'T FORGET THE TOOLING!

We have thousands of high-quality tooling products at unbeatable low prices... and we're adding more every day at www.HaasTooling.com

Haas Automation, Inc.
2800 Sturgis Rd., Oxnard, CA, USA, +1-805-278-1800

Specifications subject to change without notice. Not responsible for typographical errors. Machines shown with optional equipment. Actual product appearance may differ. Pricing subject to change without notice.

