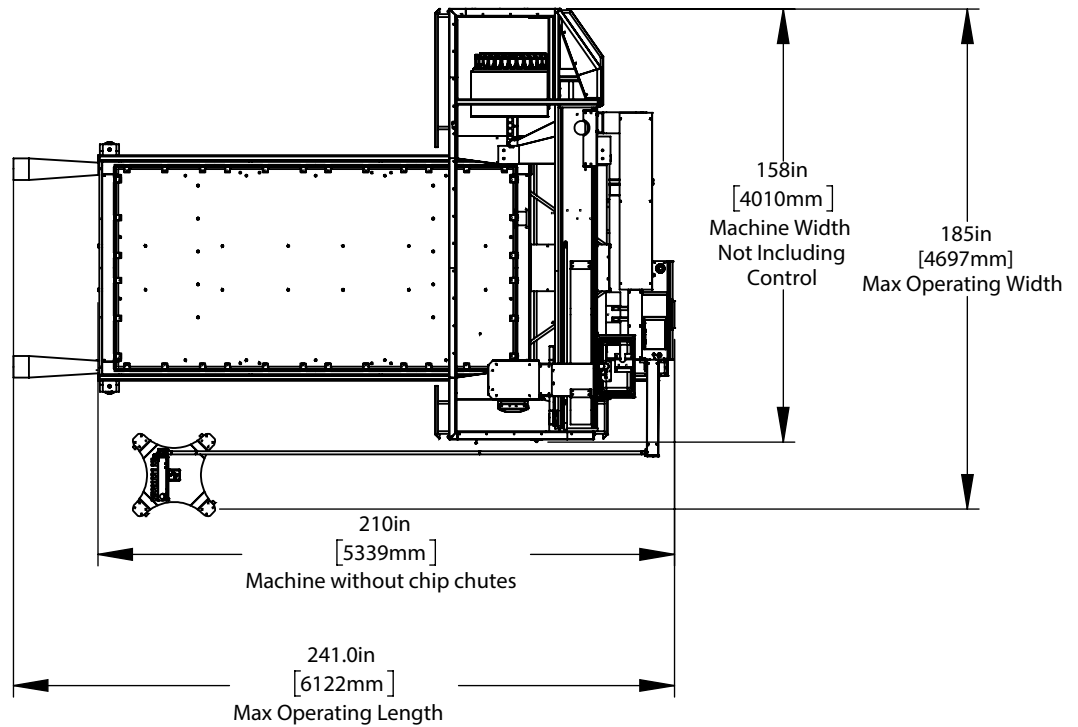
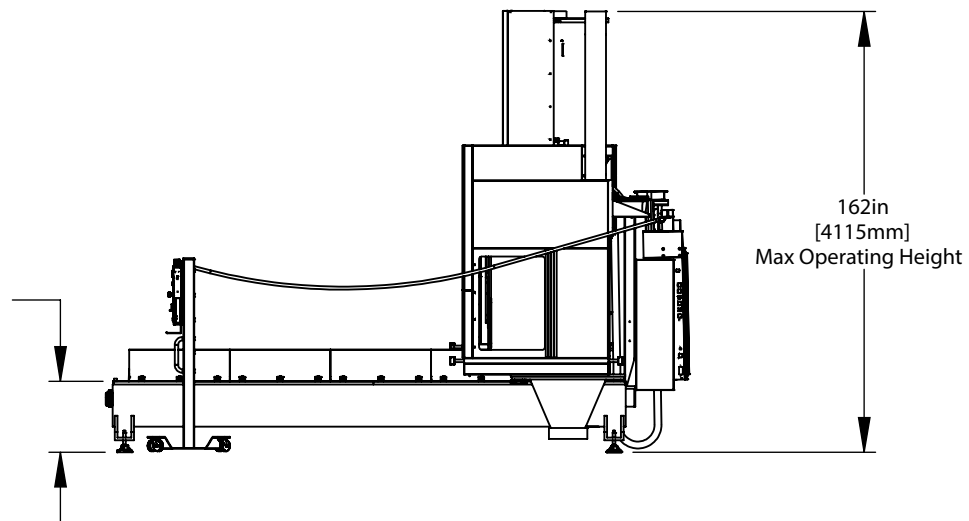


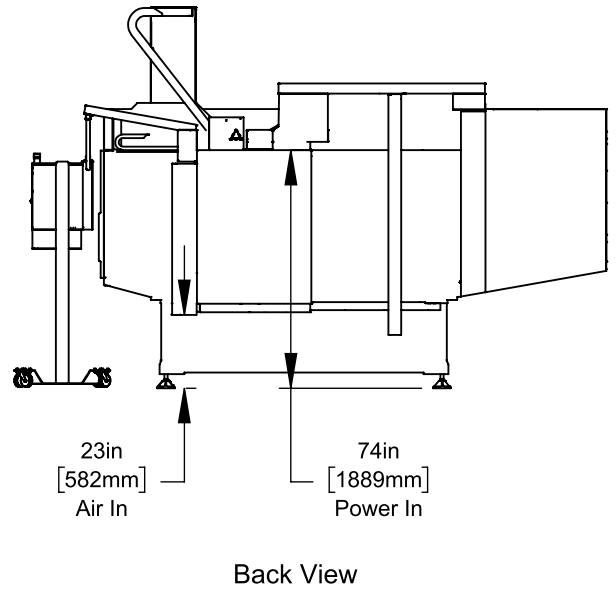
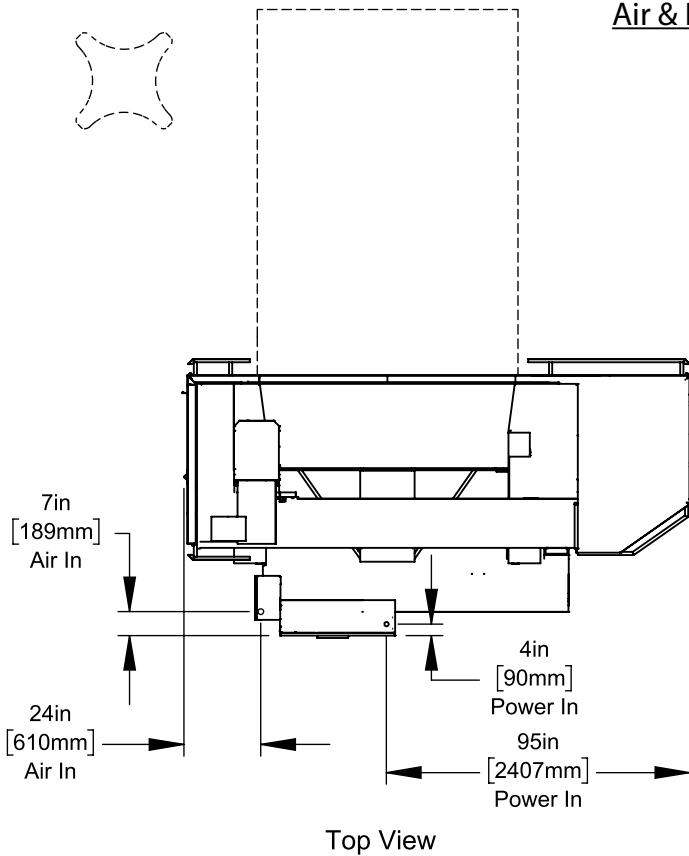
26in
[658mm]
Table Height



All dimensions based on stackup of sheetmetal, subject to variation of 1/2" (13 mm)

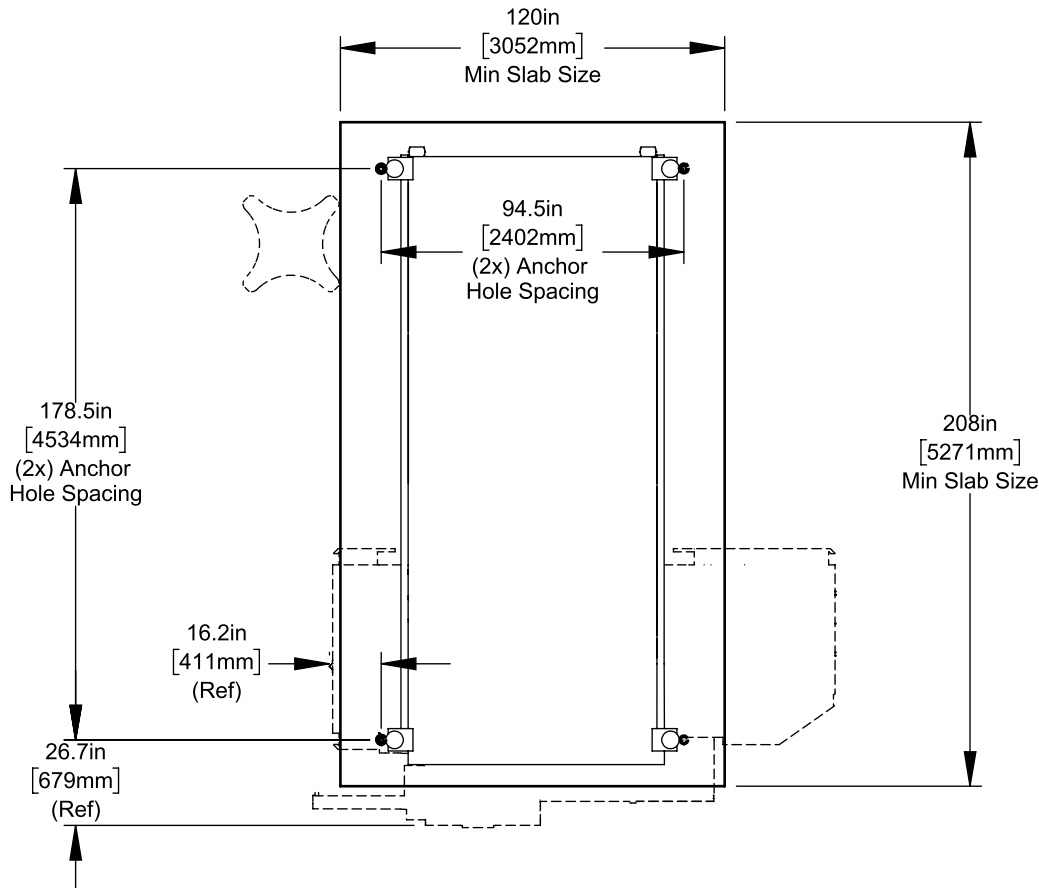
*Due to continual product improvements, machine dimensions are subject to change without notice.

Air & Power

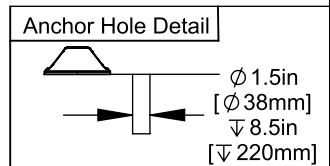


All dimensions based on stackup of sheetmetal, subject to variation of 1/2" (13 mm)

Anchor Pattern

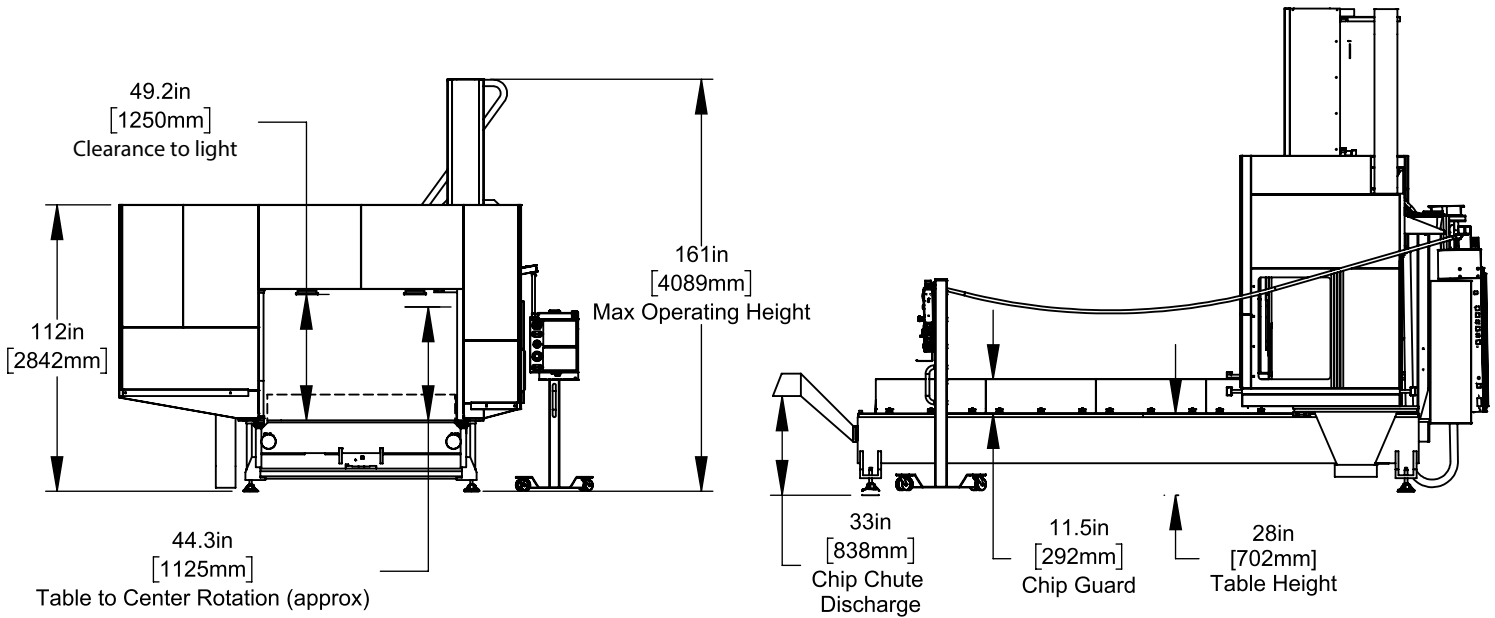


Note: Concrete Slab must extend 12" [305mm] beyond bored holes in all directions



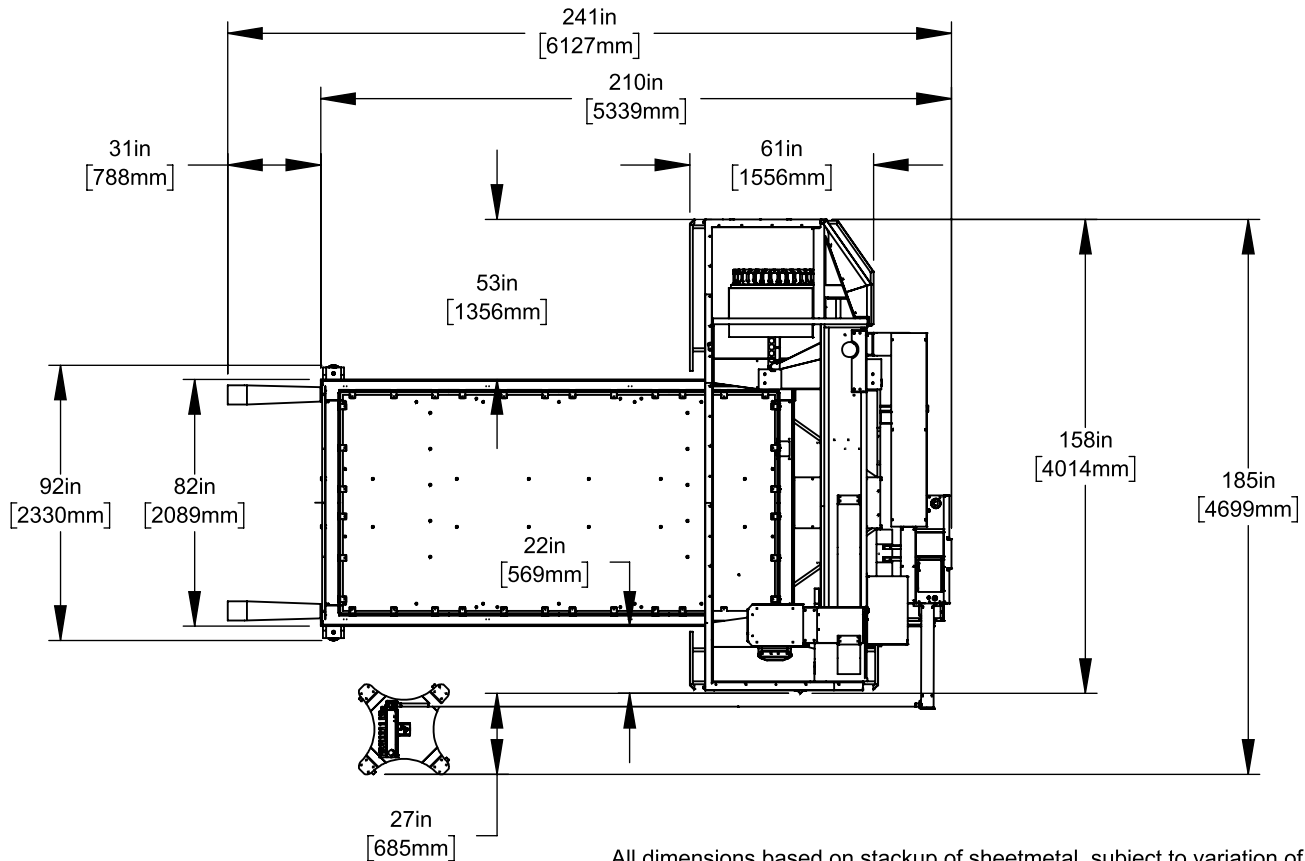
*Due to continual product improvements, machine dimensions are subject to change without notice.

Height Breakdown



All dimensions based on stackup of sheetmetal, subject to variation of 1/2" (13 mm)

Width Breakdown

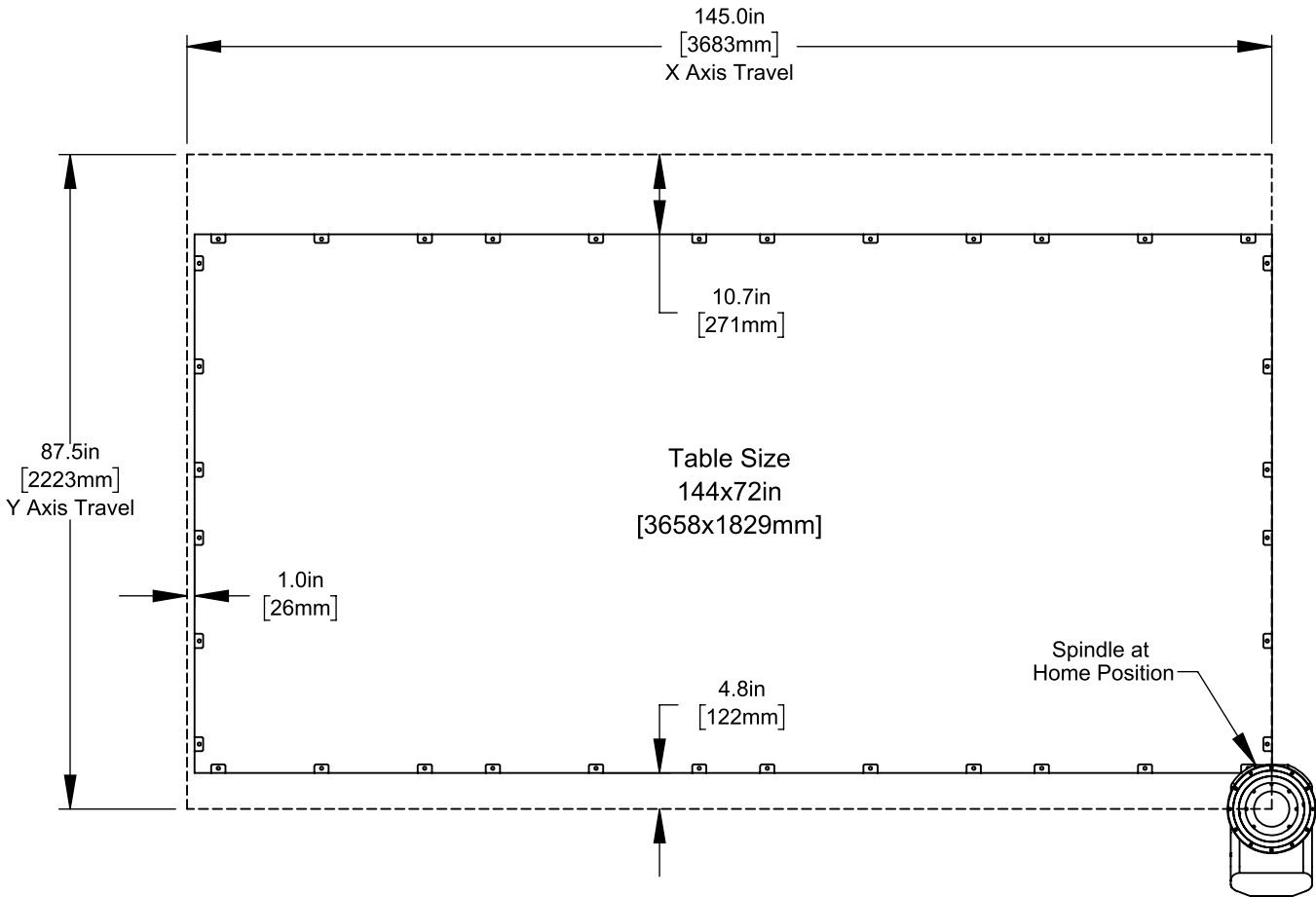


All dimensions based on stackup of sheetmetal, subject to variation of 1/2" (13 mm)

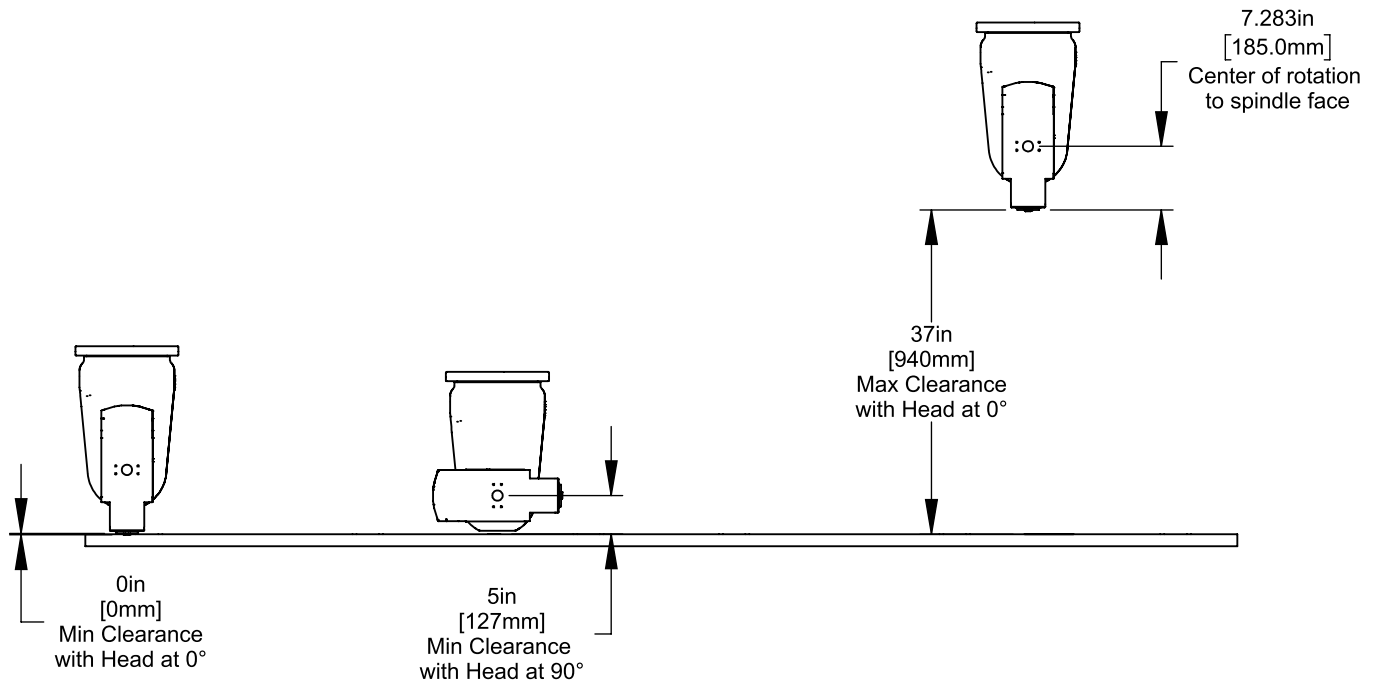
*Due to continual product improvements, machine dimensions are subject to change without notice.

Max Travels		
X	145.0in	3683mm
Y	87.5in	2223mm
Z	39.4in	1000mm

X&Y-Axis Clearance

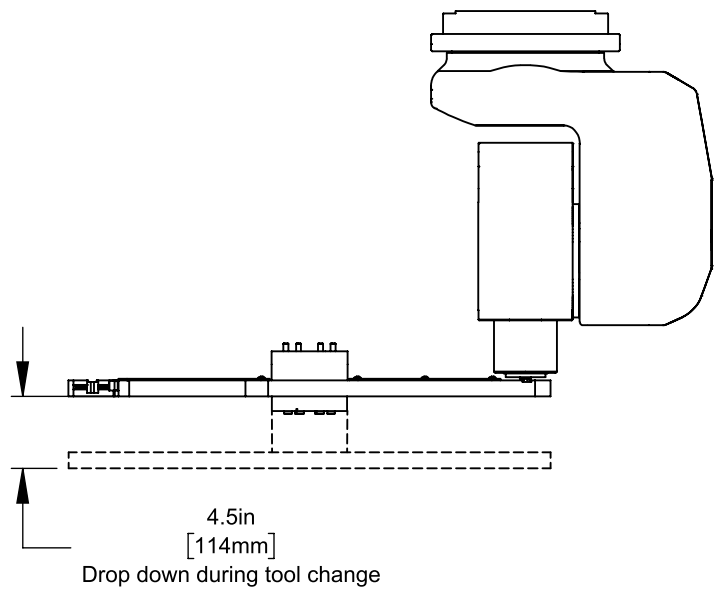
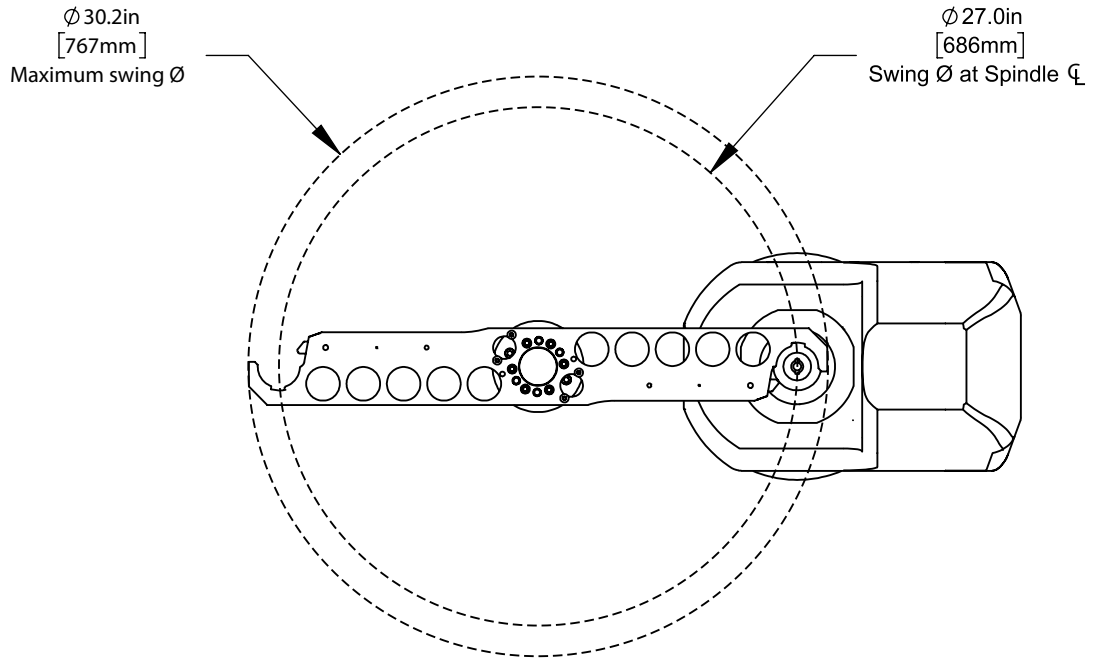


Z-Axis Clearance



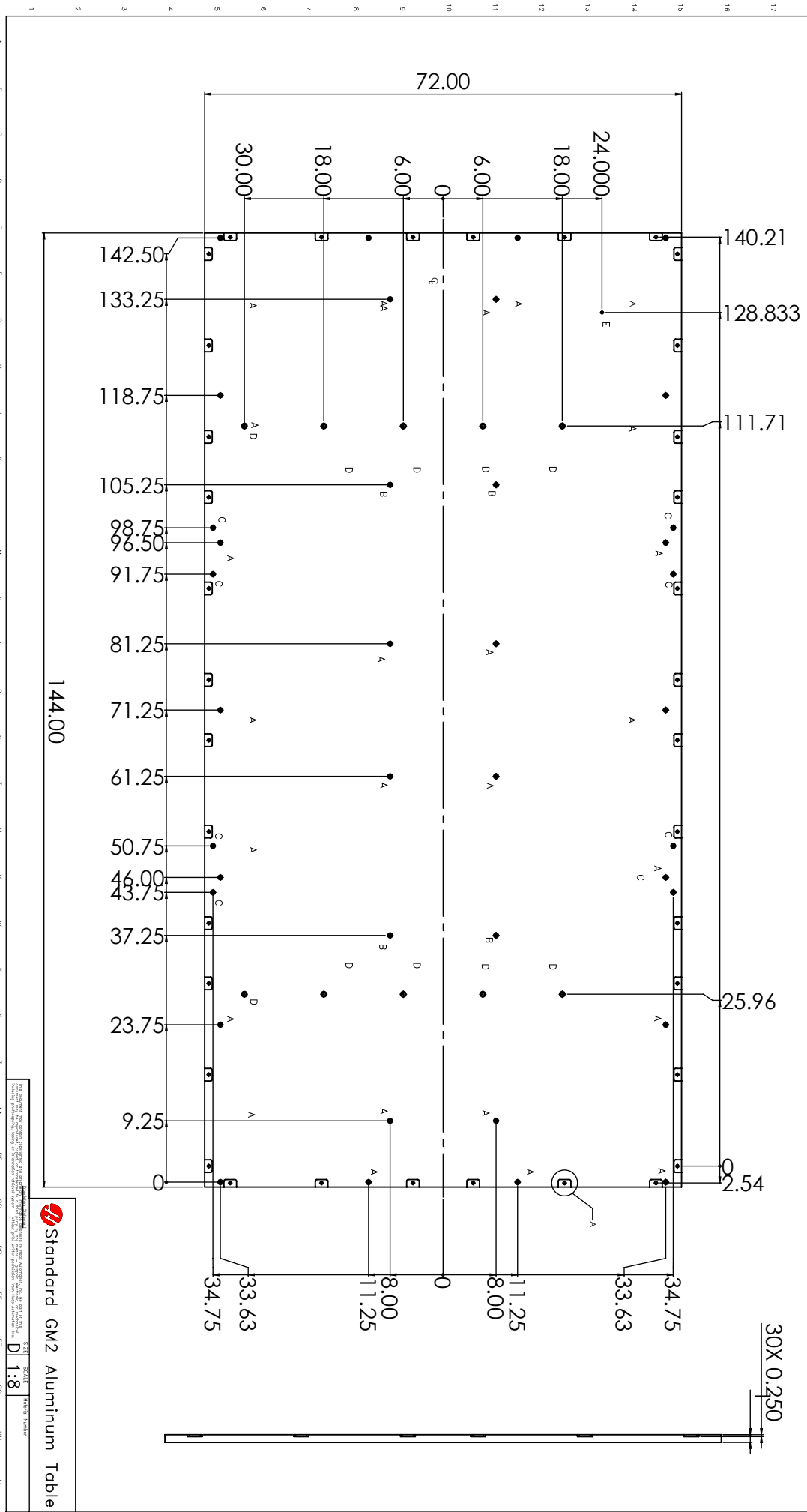
*Due to continual product improvements, machine dimensions are subject to change without notice.

Tool Changer



*Due to continual product improvements, machine dimensions are subject to change without notice.

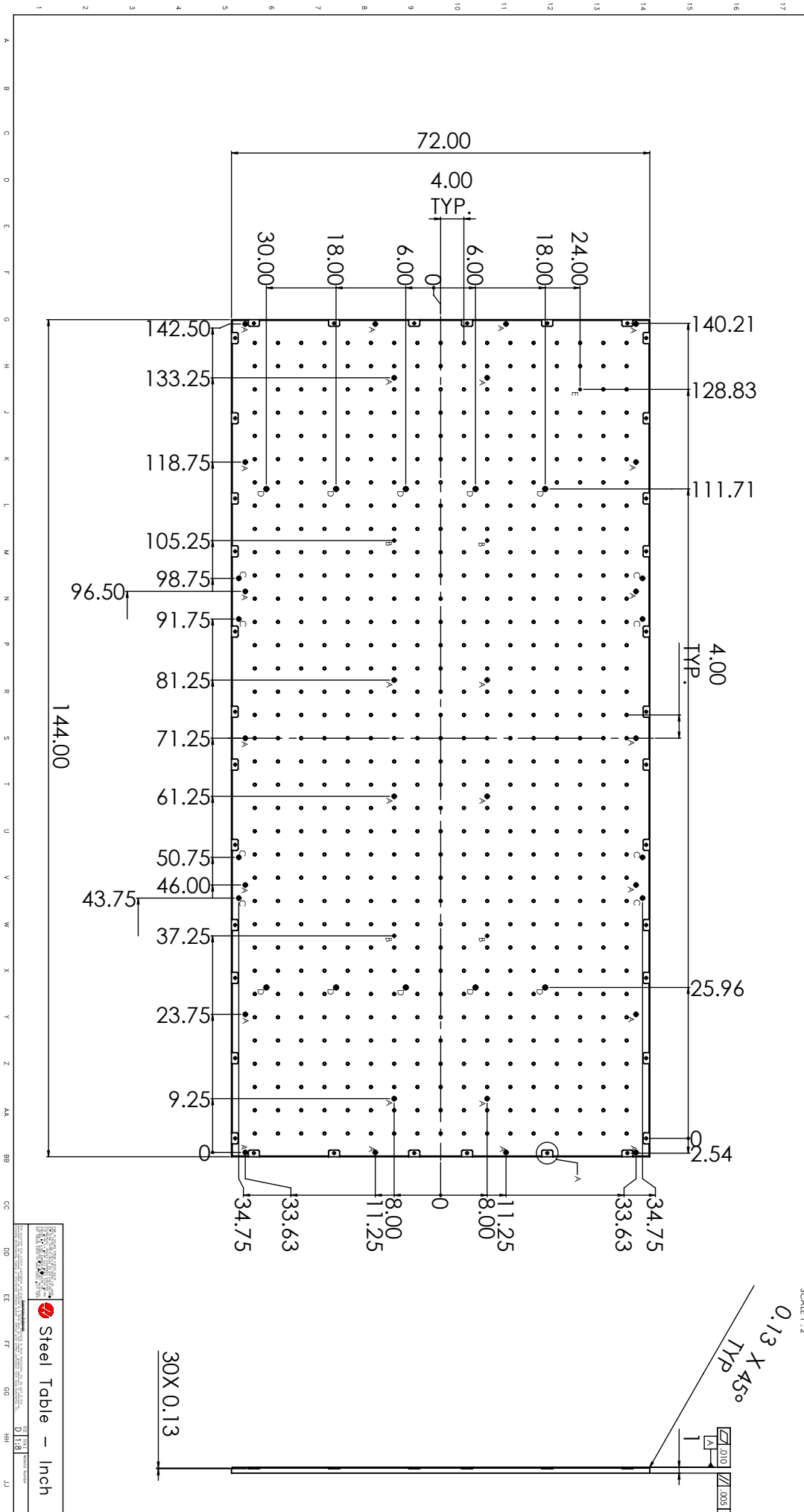
HOLES TABLE		
LTR	DESCRIPTION	QTY
A	Ø .391 THRU, □ Ø .709 T.59	26
B	1/2-13 UNC-2B THRU, □ Ø .709 T.59	4
C	Ø .332 THRU, □ Ø .709 T.59	8
D	Ø .531 THRU, □ Ø .813 T.63	10
E	3/8-16 UNC-2B T.50	1



*Due to continual product improvements, machine dimensions are subject to change without notice.

HOLES TABLE		
LTR	DESCRIPTION	QTY
A	Ø.391 THRU, □ Ø.709 T.59	26
B	1/2-13 UNC-2B THRU, □ Ø.709 T.59	4
C	Ø.532 THRU, □ Ø.709 T.59	8
D	Ø.531 THRU, □ Ø.813 T.63	10
E	3/8-16 UNC-2B T.50	1
F	1/2-13 UNC-2B T.75 DO NOT BREAK THRU	594

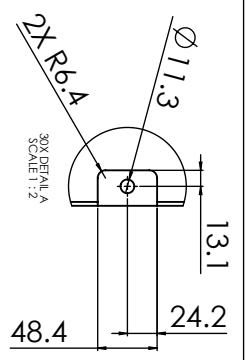
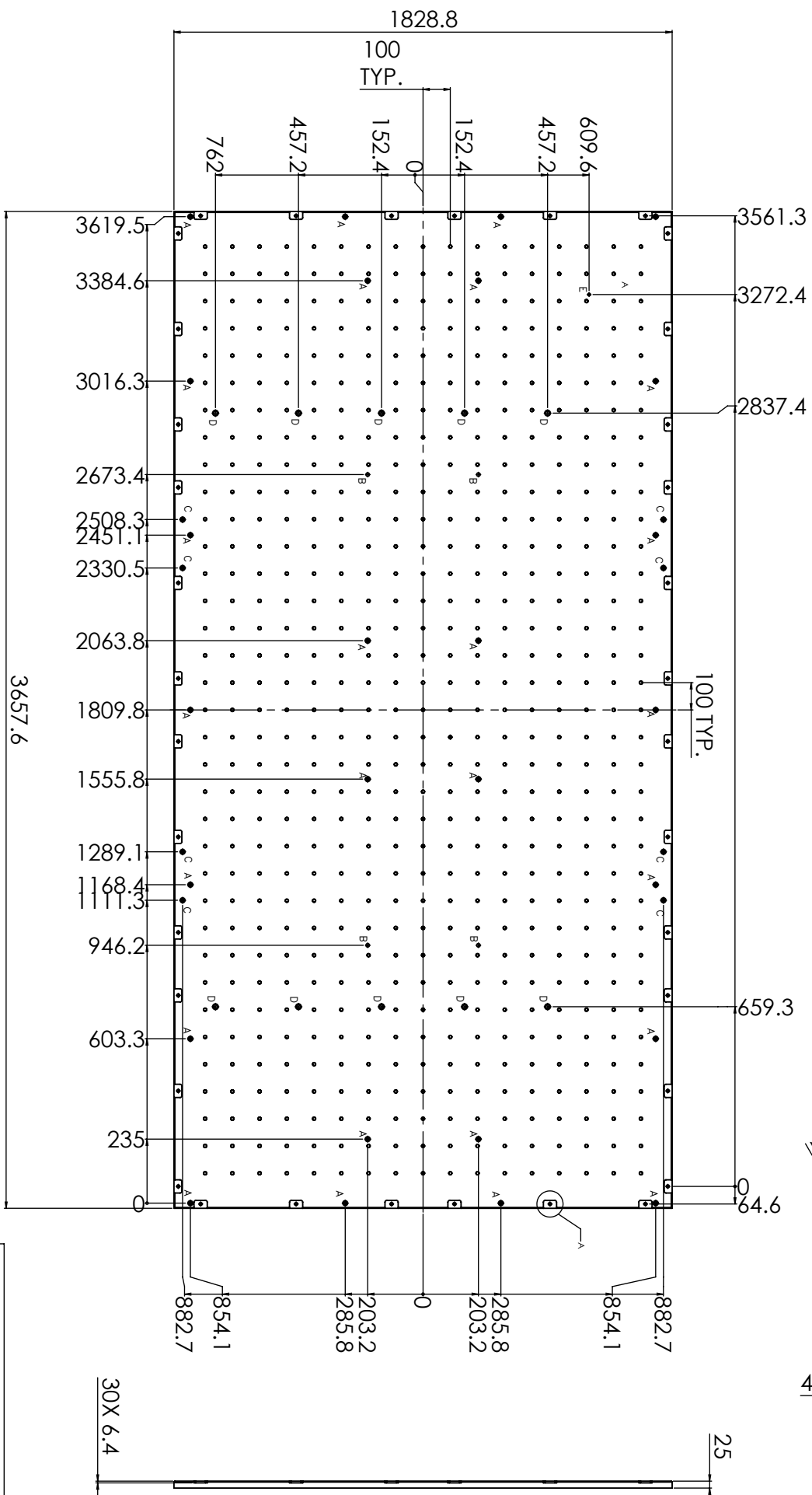
NOTES: UNLESS OTHERWISE SPECIFIED
1. ALL UNMARKED HOLES ARE 'F' HOLES



*Due to continual product improvements, machine dimensions are subject to change without notice.

HOLES TABLE		
LTR	DESCRIPTION	QTY
A	Ø10mm THRU, □ Ø18mm ±15mm	26
B	1/2-13 UNC-2B THRU, □ Ø18mm ±16mm	4
C	Ø8.43mm THRU, □ Ø18mm ±15mm	8
D	Ø13.48mm THRU, □ Ø20.65mm ±16mm	10
E	3/8-16 UNC-2B ±12.7mm	1
F	M12 X 1.75 ±19mm DO NOT BREAK THRU	595

NOTES: UNLESS OTHERWISE SPECIFIED
1. ALL UNMARKED HOLES ARE 'F' HOLES



Steel Table - Metric

*Due to continual product improvements, machine dimensions are subject to change without notice.