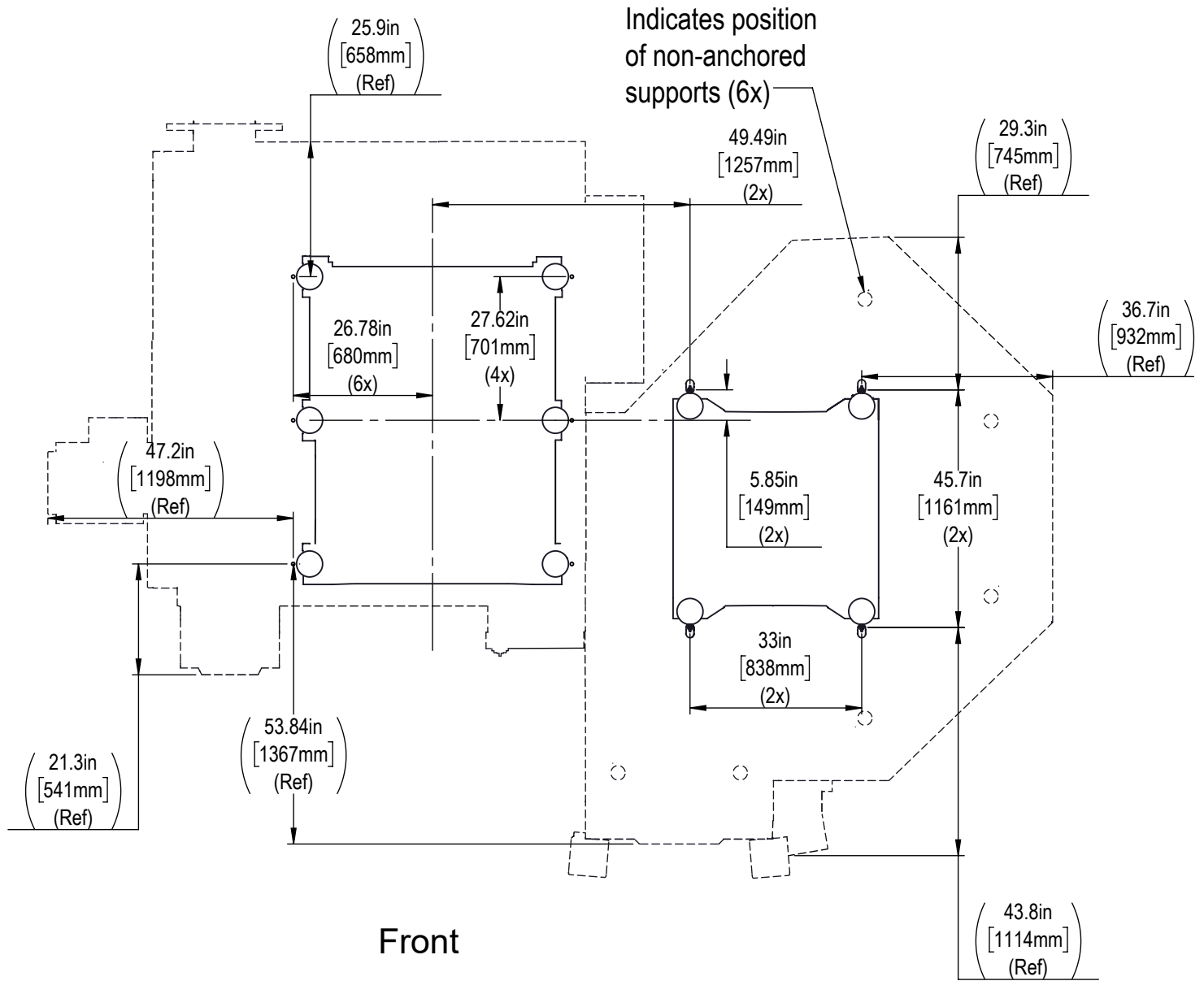


Please see the UMC-500 Layout Drawing for additional measurements and specifications of the machine



Pallet Detail

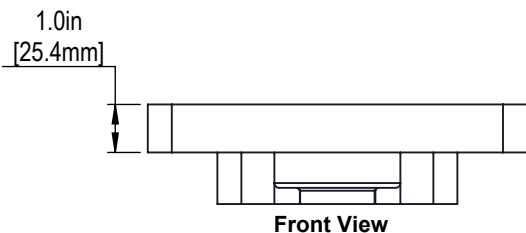
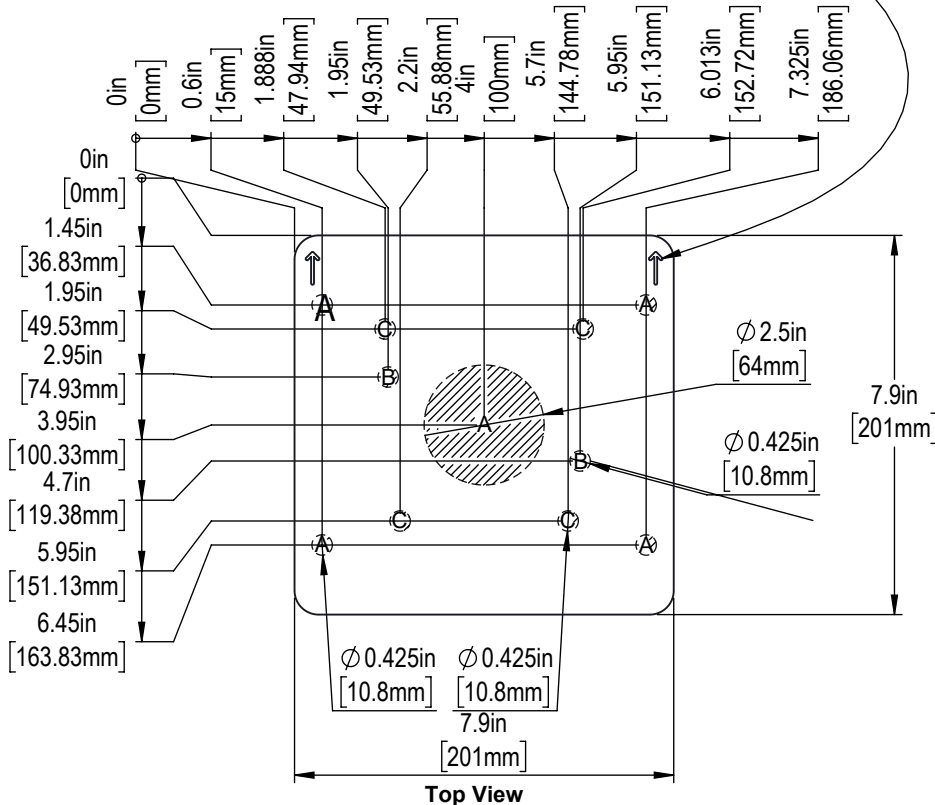
Pallet surface comes blank, without mounting features.

Drill and tap custom holes to suit your application with the following considerations

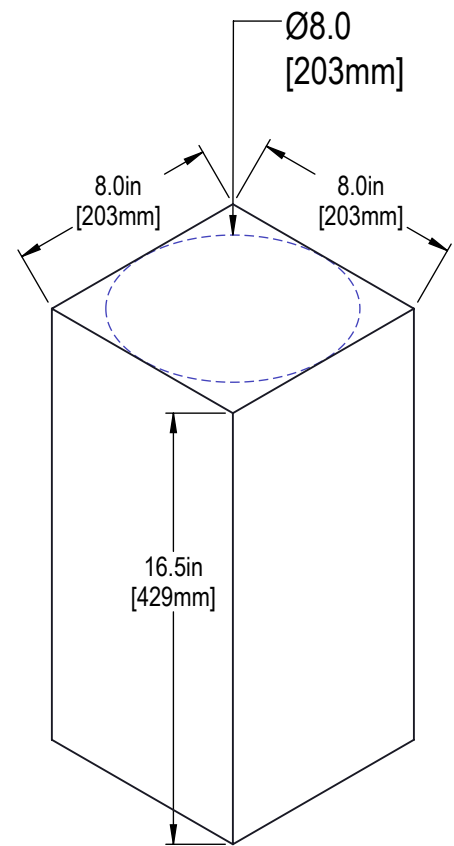
1. Do not exceed ∇ .500in [12.7mm] maximum depth in Zone "A"
2. Do not exceed ∇ .250in [6.3mm] maximum depth in Zone "B"
3. Do not place any mounting features in Zone "C"
4. Do not exceed ∇ .900in [23mm] maximum depth in all other areas

Failure to follow these guidelines may result in interference with locating or retention features on the bottom of the pallet rendering it unusable, which is not covered under warranty

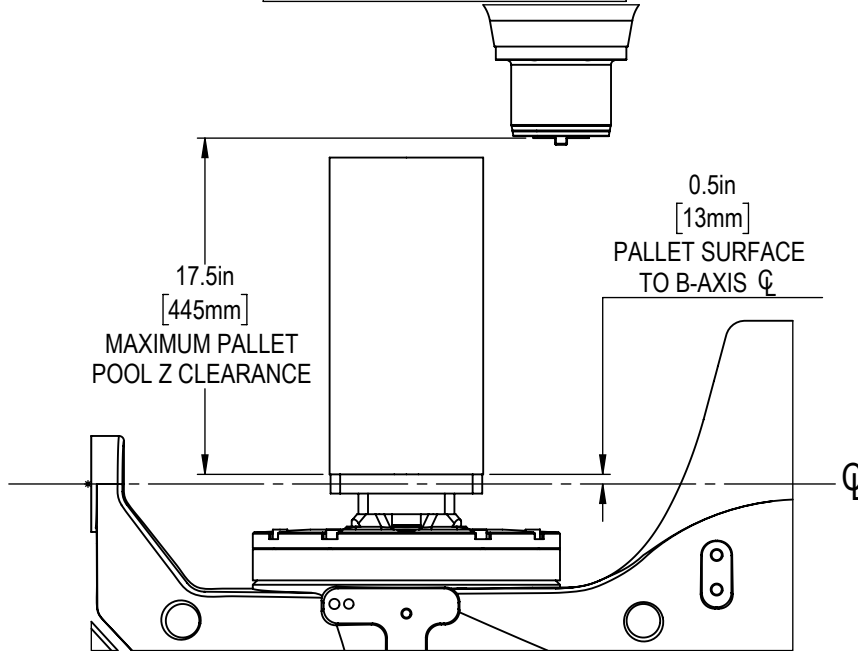
Arrows point towards Pallet Pool Lifting Arm during storage and moving sequence. After reloading a part at the operator station, rotate pallet so that arrows point away from the operator and towards the pallet pool center before returning pallet to the queue



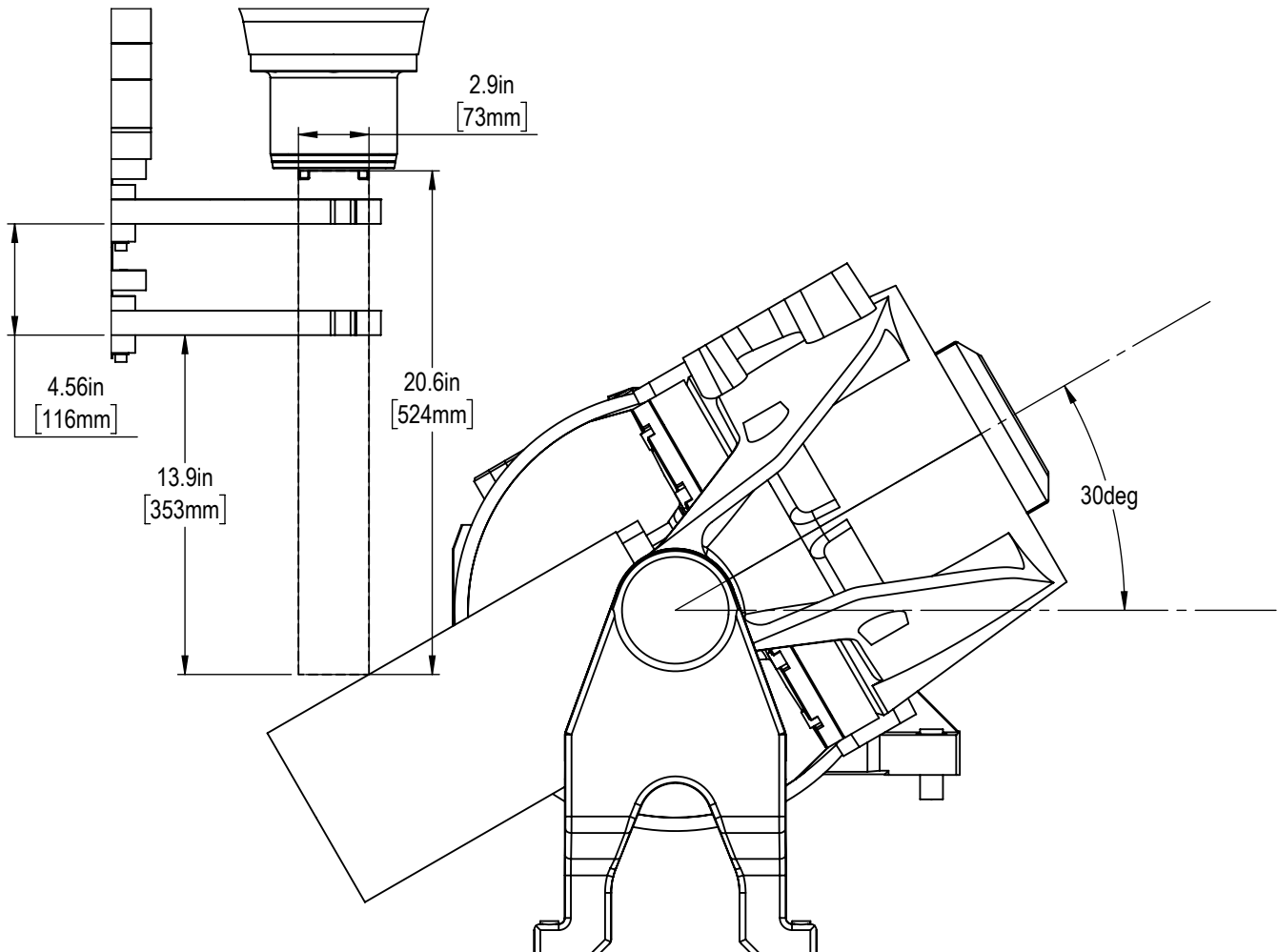
UMC-500 Pallet Pool Maximum Work Envelope



CENTER OF ROTATION



TOOL CHANGED AND MAX TOOL DIMENSIONS AT MAX B-AXIS TRAVEL



30-SMTC USED FOR REFERENCE



PRINTABLE 1:1 SCALE REFERENCE

