

S 24 U - M C L N R 4 □

1 2 3 4 5 6 7 8 9 10

Type of Bar Bar Diameter Bar Length Method of Mounting Insert Insert Shape Lead Angle of Boring Bar Relief Angle of Insert Hand of Bar Length of Cutting Edge Manufacturing option

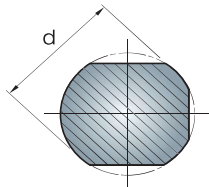
1 Type of Bar

S 24 U - M C L N R 4 □

- A : Solid Steel with coolant hole
- B : Solid Steel with anti-vibration
- C : Carbide bar with fixed steel head
- D : Solid Steel bar with anti-vibration device and coolant hole
- E : Carbide bar with fixed steel head and coolant hole
- G : Carbide bar with fixed steel head and anti-vibration device and coolant hole
- H : Solid heavy metal with coolant
- J : Solid heavy metal with coolant
- S : Solid Steel bar
- X : Special bar

2 Bar Diameter

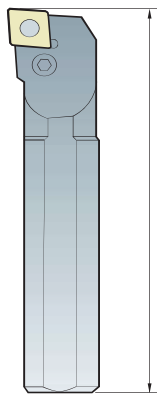
S 24 U - M C L N R 4 □



03 : 0.1875	16 : 1.000
04 : 0.2500	20 : 1.250
05 : 0.3125	24 : 1.500
06 : 0.3700	28 : 1.750
08 : 0.5000	32 : 2.000
10 : 0.6250	36 : 2.250
12 : 0.7500	40 : 2.500

3 Bar Length

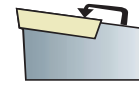
S 24 U - M C L N R 4 □



length(L) (inch)	
F	3
G	3.5
H	4
J	4.5
K	5.0
L	5.5
M	6
N	6.5
P	6.75
Q	7.0
R	8.0
S	10.0
T	12.0
U	14.0
V	16.0
W	18.0
Y	20.0
X	Special length

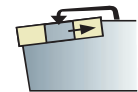
4 Method of Mounting Insert

S 24 U - M C L N R 4 □



Top clamping

C



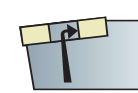
Top and hole clamping

D



Top and hole clamping

M



Hole clamping

P

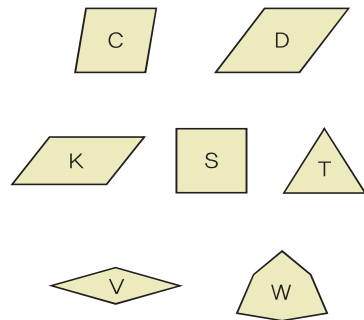


Screw on

S

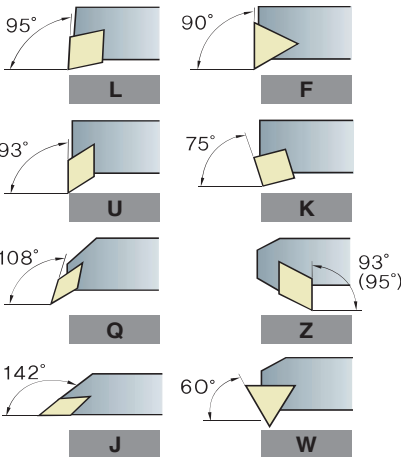
5 Insert Shape

S 24 U - M C L N R 4 □



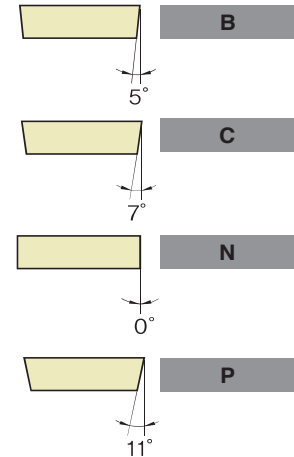
6 Lead Angle of Boring Bar

S 24 U - M C L N R 4 □



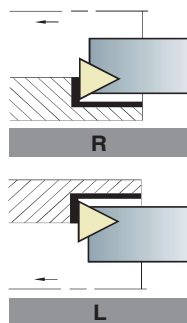
7 Relief Angle of Insert

S 24 U - M C L N R 4 □



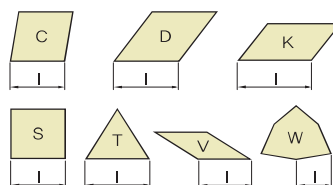
8 Hand of Bar

S 24 U - M C L N R 4 □



9 Length of Cutting Edge

S 24 U - M C L N R 4 □



10 Manufacturing option

S 24 U - M C L N R 4 □

Manufacturing option