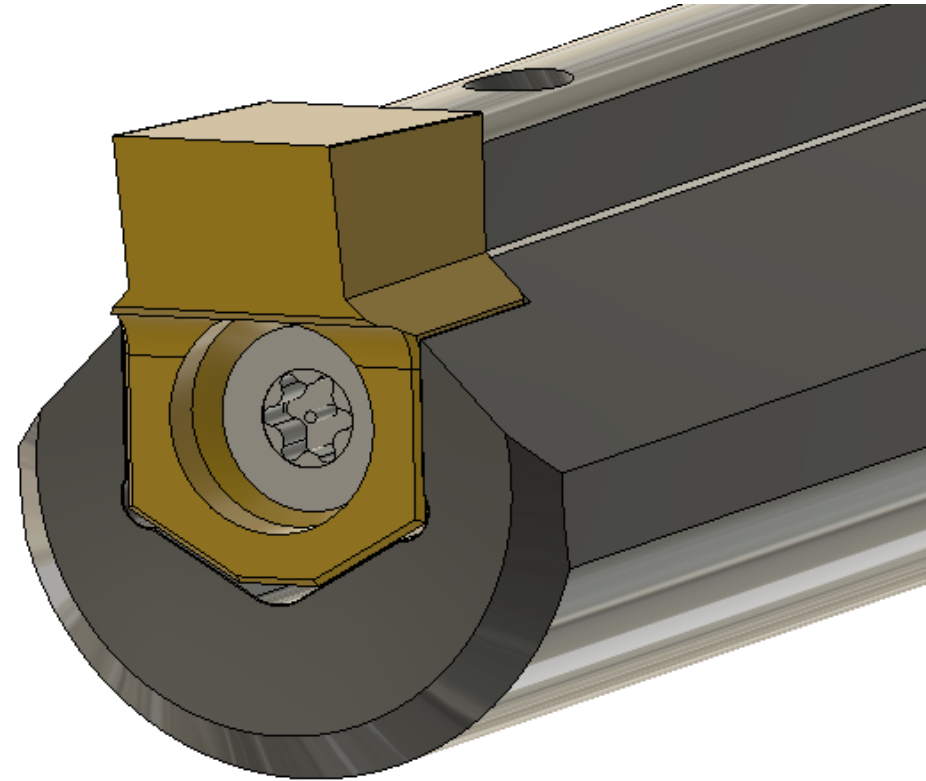
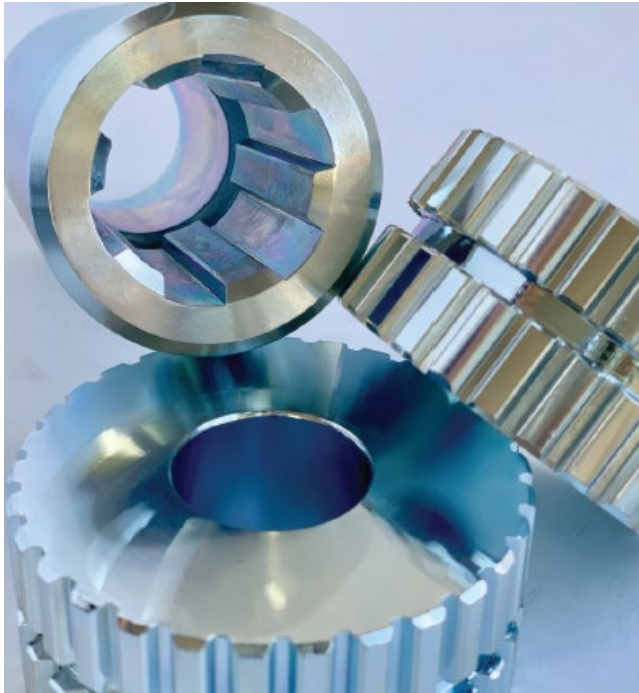


Technical Details



Haas Keyway inserts



- Haas keyway (slot) inserts TiN coated made with hardened sintered alloy with hardness of 70-71Rc.
- Options for each width include different tolerances based on the type of fit required when assembled with key inserts or mating parts.
- Filter tolerances H7 (most common for slip/snug fit), P9 (interference fit or pressed fit), D10 (Clearance fit, for components that require further thermal treatments), C11 (least common 'loose fit')
- H7 tolerance inserts are also available in the SM version with the optional chamfer included (to form 0.02" chamfers calculated from medium diameter for standard 6604 keyways)



Technical Details

Keyway Tolerances



H7

H7- Transition/Clearance Fit

Most common for slip/snug fit

P9

P9- Interference Fit

Pressed or forced fit

D10- Clearance Fit

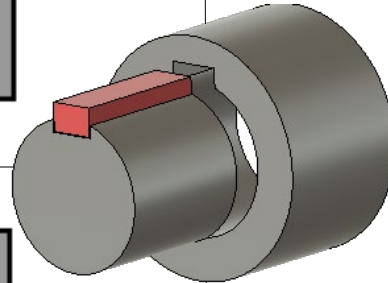
For components that require further thermal treatments

C11- Clearance Fit

Least common 'loose fit'

D10

C11



*Refer to Tech Specs for exact size for each insert

