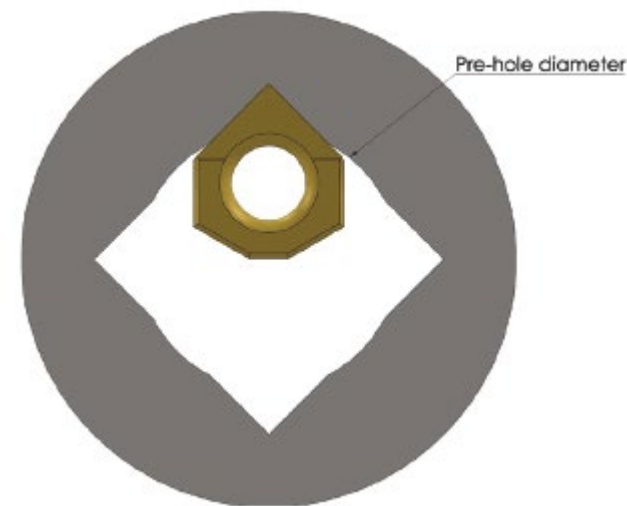
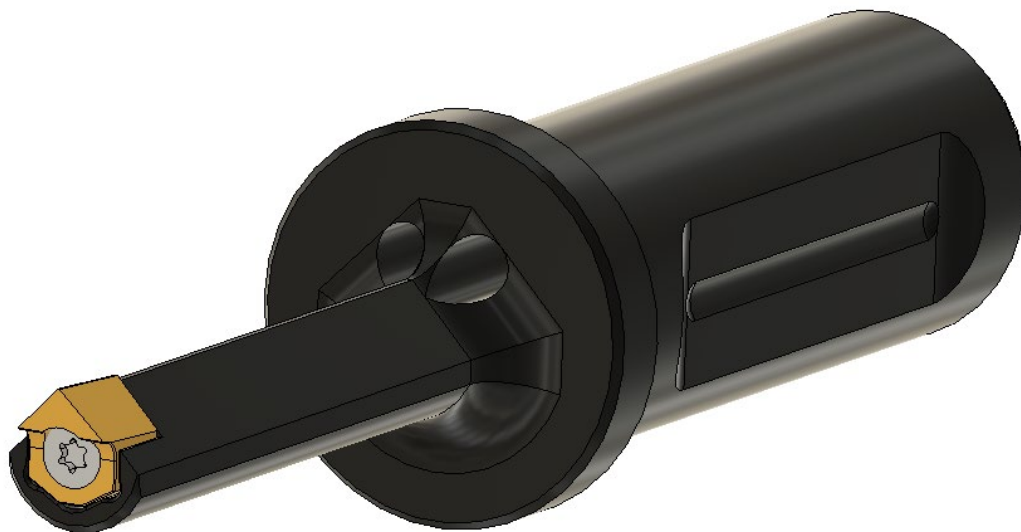


Technical Details



ID Square Tools



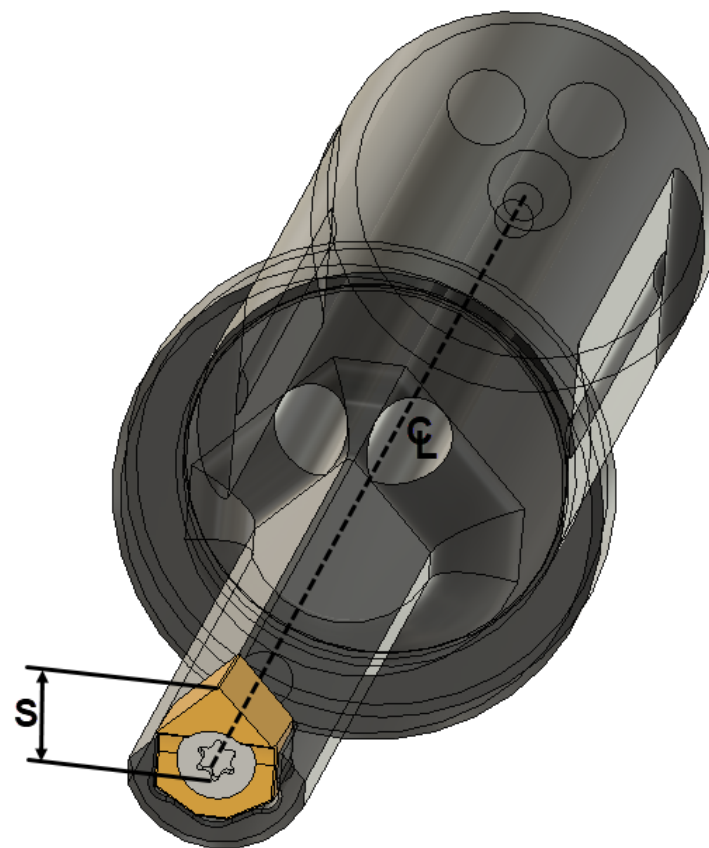
- Haas Square Tools are made with quenched and tempered tool steel.
- The section that houses the insert is hardened to 58/60 HRC, making it very resistant to compression.
- All ID Broach Tools feature through tool coolant, in addition to lubricating and cooling the insert, are used to extract the chips, produced through broaching or slotting, out of the blind hole.
- All the square tools feature 25mm shank diameter.
- Select holder size based on square size required.
- No other tooling required for Y axis Haas Lathes. Load the tool, Insert and program.
- Use the eccentric bushing for easy alignment on Haas Lathes without Y axis capability.
- Use the alignment pin for easy alignment on Haas Mills.
- No Programming required. Use the provided Haas VPS templates for both lathes and mills to generate keyways, slots, splines, squares and hex features on your components using the unique G156 canned cycle.

Technical Details



ID Square Tools

| Part Number | Tool Code | [S] Dimension (mm) | [S] Dimension (Inch) |
|-------------|------------|--------------------|----------------------|
| 02-0880 | SQ - 8/10 | 4.25 | 0.167 |
| 02-0881 | SQ - 10/13 | 4.80 | 0.189 |
| 02-0882 | SQ - 13/16 | 7.00 | 0.276 |
| 02-0883 | SQ - 16/19 | 8.50 | 0.335 |
| 02-0884 | SQ - 19/27 | 10.75 | 0.423 |
| 02-0885 | SQ - 27/37 | 14.50 | 0.571 |



- S dimension is taken from tool holder centerline to the tip of the Haas Square inserts.
- Dimension maybe necessary when utilizing this tool on Haas mills where calibrating the diameter or radius is not possible.
- Required when using the VPS broaching templates for Haas Mills.

