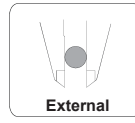
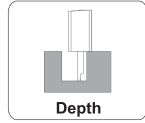
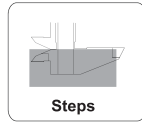


OPERATING PROCEDURE



Set Up

1. Ensure the locking screw is loose, if not, turn the locking screw counterclockwise to unlock the caliper.
2. Use the thumb wheel to adjust jaws.
3. Clean the measuring surface of the jaws.
4. Close the jaws.
5. Press the power button, and set the zero position. If display does not show a value, check condition of the battery.

The caliper is ready to measure.

Measurement Operation

1. Turn on the caliper.
2. Set inch/metric as necessary.
3. Position the caliper frame to such that the caliper jaws are close to the part to measure.
4. Close the jaws so that they touch the part to measure.
5. Read the measurement on the LED screen.

Normal mode: Turn on the caliper. The display will show the distance from the last position the caliper was at before being powered off. There is no need to adjust the origin position while in absolute measurement mode. Pressing the power button for 5 seconds will reset the zero position of the absolute measurement mode.

Power Saving Mode: Power on the caliper. The zero position of the caliper is where the jaws are at during power up. The caliper will not remember the last position like in normal mode. The user must move the caliper jaws to a starting position, then press and hold the power button for 5 seconds to set the zero position (origin).

Relative measurement: Press the INC button, "INC" (incremental) will appear in the left corner of the display. The caliper is in INC memory measurement and the display will show 0.00 at the position the INC button was pressed. Measurements are now taken from this position.

Absolute measurement: Measurements are taken from the origin. Note that there is not a "INC" on the display.

CLEANING AND MAINTENANCE

Wipe any oil, water or grime from the caliper after use, using a dust free cloth. Minimize the use of any cleaning solvents, as these may harm the plastic parts.

Return the caliper to its box after use to avoid damage.

REPLACE BATTERY AND SET ORIGIN

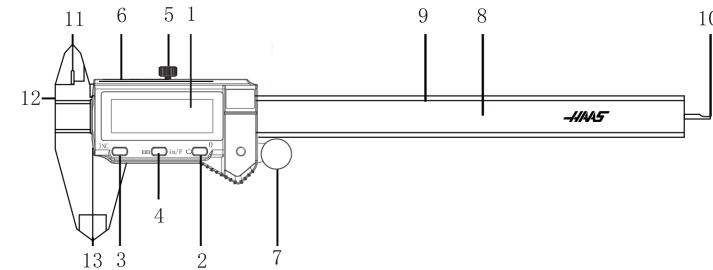
If the numbers are flashing this indicates the battery is low.

1. Remove the battery box cover.
2. Remove battery.
3. Replace battery, the positive side (+) will face the user.
4. Replace the battery cover.
5. Slide the caliper jaws completely closed.
6. Press and hold the power button for 5 seconds. "0.00" will display, indicating the origin and reset is complete.
7. Dispose of the bad battery properly.

PRODUCT FEATURES

1. High accuracy and reliability.
2. Set origin at any position.
3. Measurement in millimeters or inches.
4. Retains origin or distance after power off.
5. Auto shutdown in 5-minutes.
6. No limit on slide speed.

PRODUCT IMAGE AND BUTTONS



1. LCD Screen: Display measurement value.
 2. $\phi/0$ Button: Press and release to power on/off the caliper. Caliper defaults to "absolute measuring mode" (ABS) when powered on.
 3. INC Button: **Press and release INC button** at any position. When the LCD displays "0.00" and "INC", the caliper is ready for relative measurement. Press the INC button again to return to absolute measurement. Note the "INC" symbol is no longer displayed.
- Press and hold the INC button** to set the origin

4. mm/in Button: Press this button to change between inch and metric.
5. Locking Screw: Rotate counterclockwise to unlock the caliper scale. Rotate clockwise to lock the caliper scale.
6. Battery Cover: Stores the battery (battery type: CR2032).
7. Thumb Wheel: Used to adjust caliper jaws.
8. Scale
9. Beam
10. Depth Measuring rod: Used to measure depth of a hole or cavity.
11. Internal Jaws: Used to measure inside dimensions.
12. Step Measurement Face: Used to measure step dimensions.
13. External Jaws: Used to measure outside dimensions.

PRODUCT SPECIFICATIONS

Measuring range	0-150mm (0-6")/0-200mm (0-8")/0-300mm (0-12")
Resolution	0.01mm/0.0005"/ 1/128"
Power	CR2032 lithium battery
Environmental humidity	0-80%
Working temperature	0-40°C (32-104°F)
Storage	-10-60°C (14-140°F)