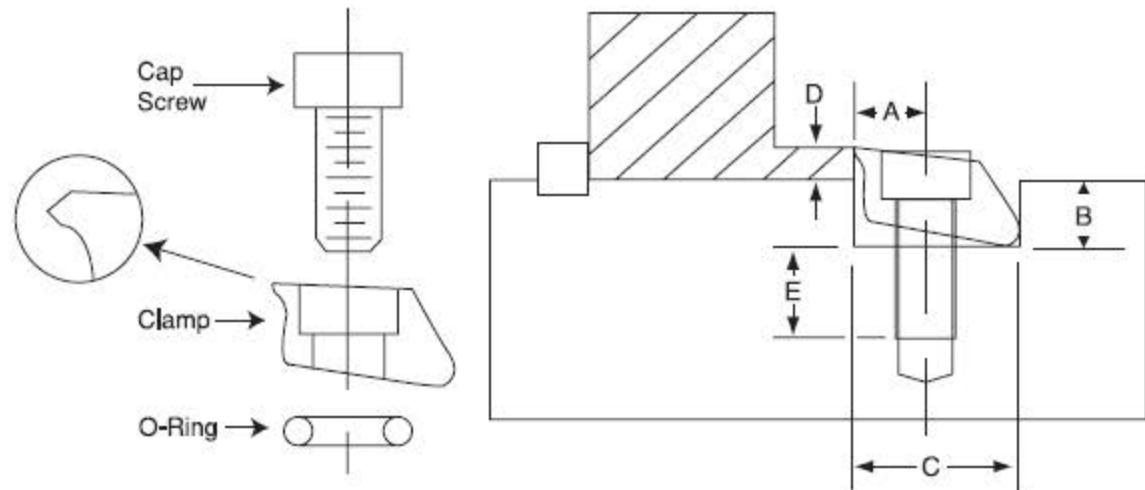


# Haas Workholding by Mitee-Bite Products



**Haas**  
F1 Team



## Pitbull® Clamp Instructions

1. Mill a slot for the Pitbull® Clamp using “B” and “C”
2. Drill and tap from edge of workpiece “A”
3. Assemble clamp with o-ring below clamp body.
4. Position clamp as shown in diagram and loosely screw to fixture.
5. Insert workpiece and tighten cap screw.