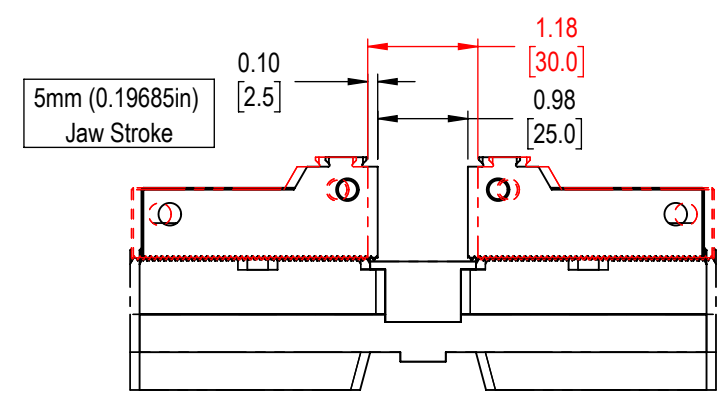
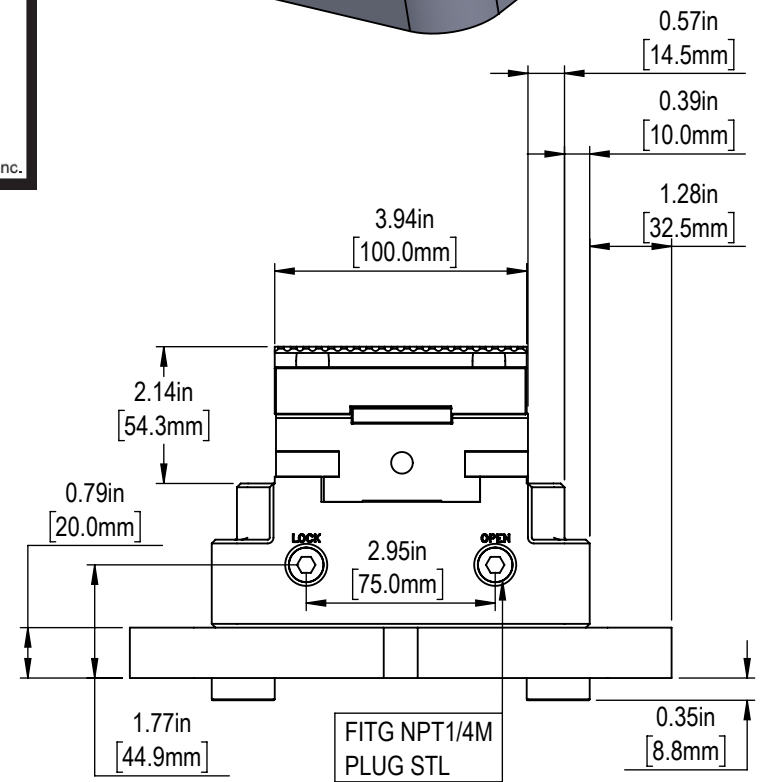
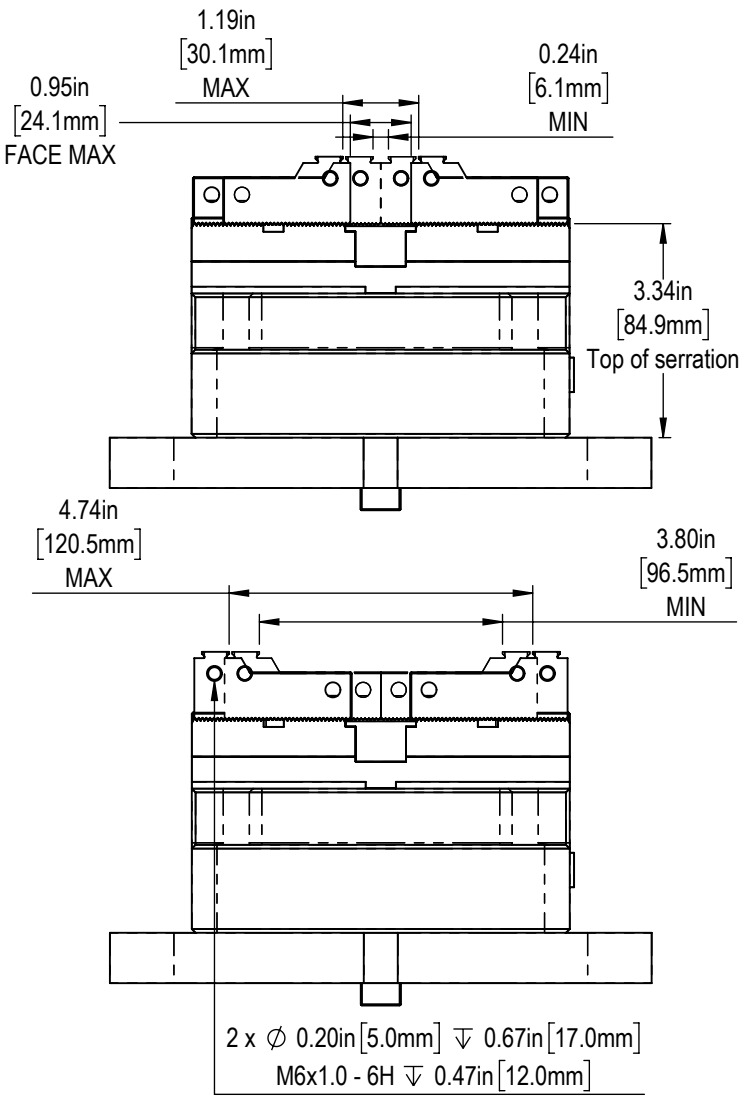
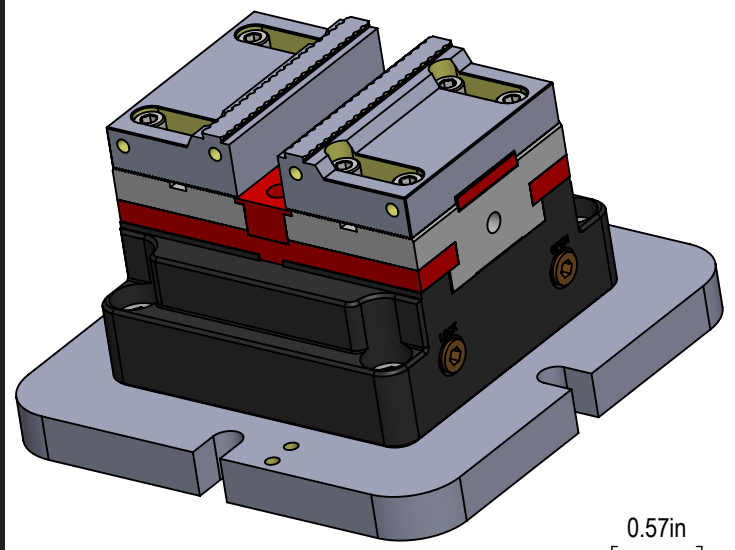
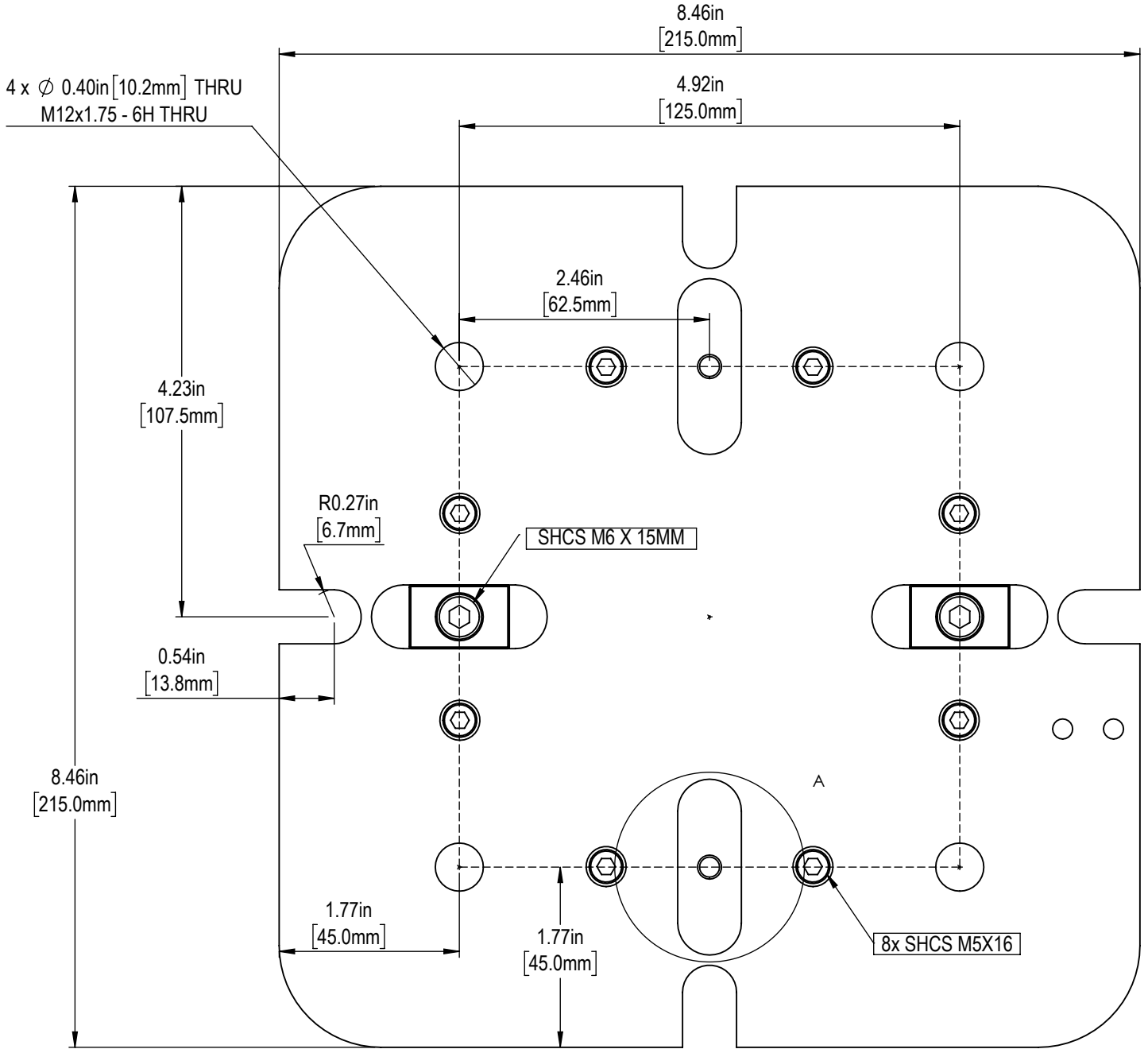


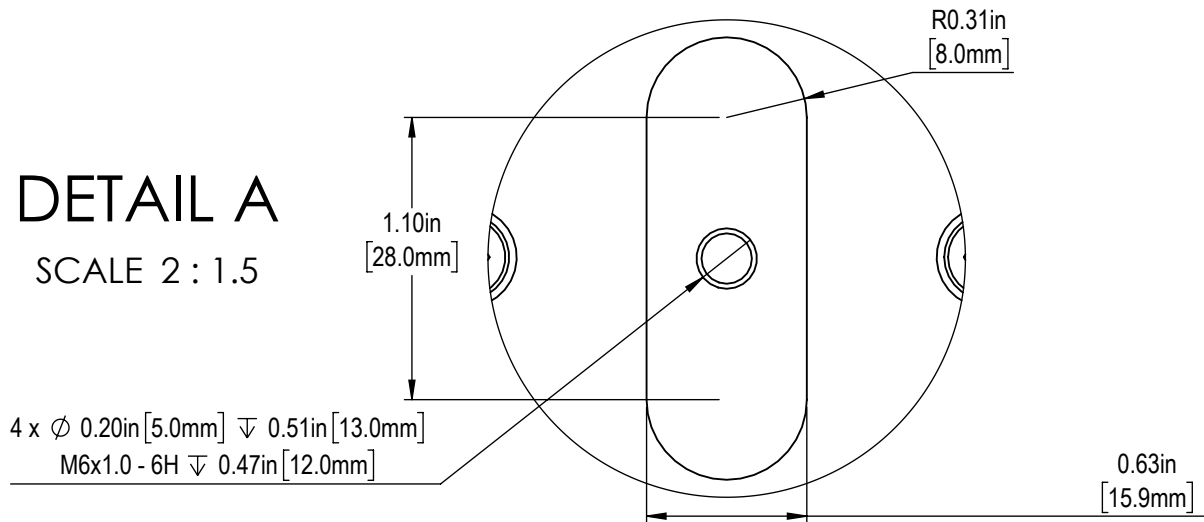
MAXIMUM CLAMPING FORCE:  
3300 LBS (14.7KN) AT 130 PSI (9 BAR).



\*Due to continual product improvements, dimensions are subject to change without notice

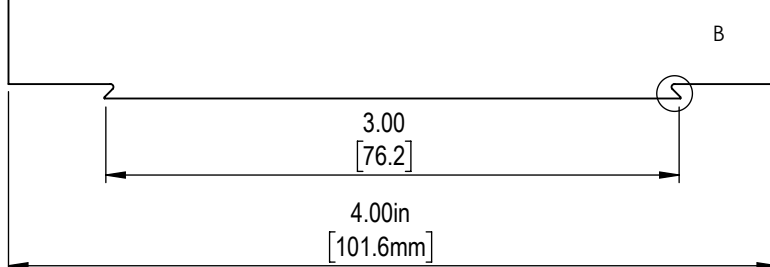


**DETAIL A**  
SCALE 2 : 1.5



\*Due to continual product improvements, dimensions are subject to change without notice

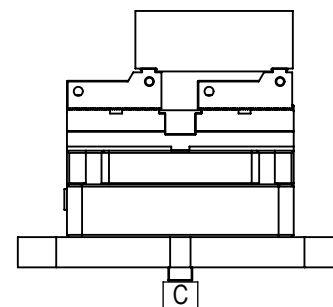
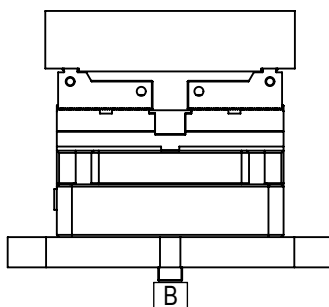
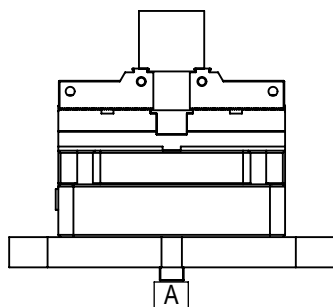
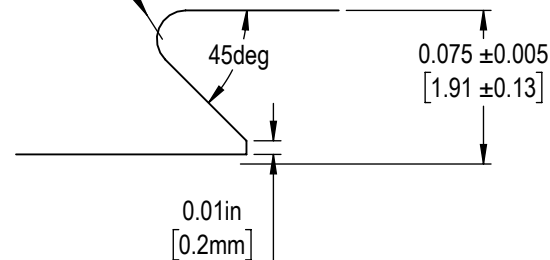
Dovetail width is recommended  
to be 75% of material width



R0.02in  
[0.4mm]  
Maximum

## DETAIL B

SCALE 10 : 1

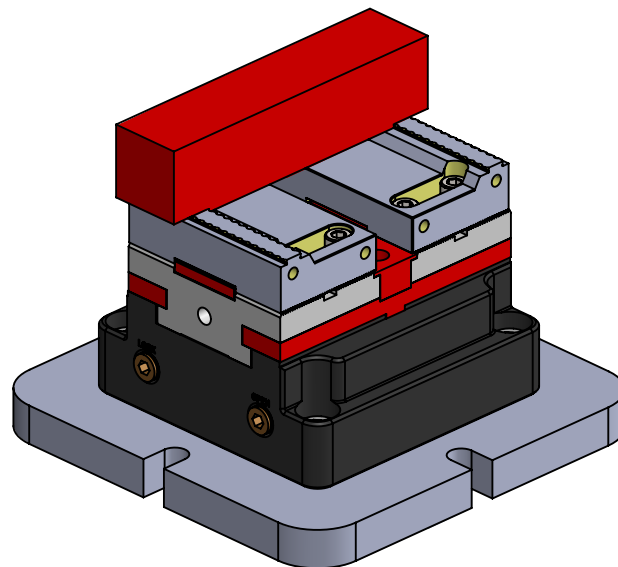


### Note:

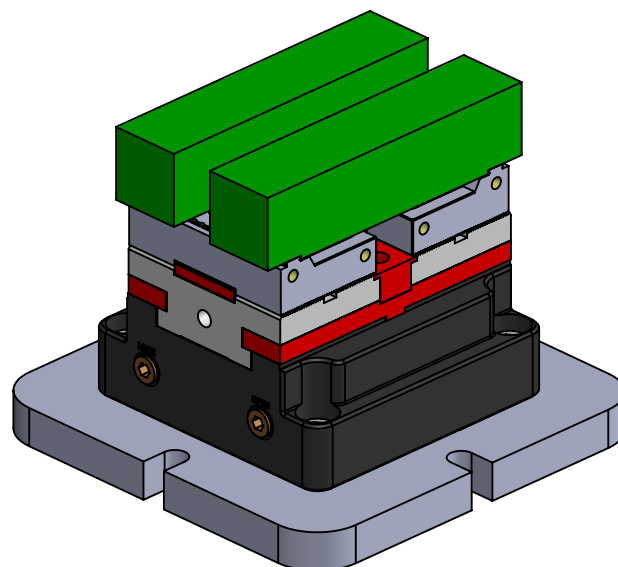
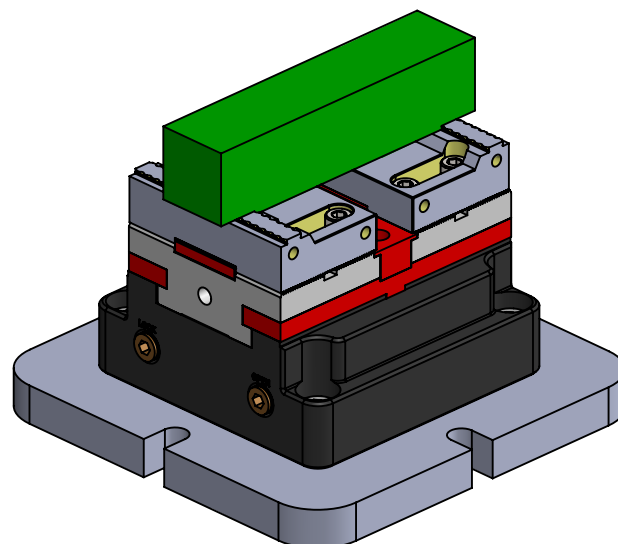
1. Off centered clamping is not allowed. Workpiece must be centered or balanced on opposite side or damage will occur.
2. Jaw stroke =5mm per side, 10mm total.
3. Vise Clamping Range:
  - [A] Both Jaws Inward 0.4 - 1.6in [10-40mm]
  - [B] Both Jaws Outward 3.9-6.7in [99-170mm]
  - [C] One Jaw Inward, One Jaw Outward 2.2-5.6in [56-142mm]

Note: Dovetail clamping is not required, but can be utilized for more secure clamping as needed

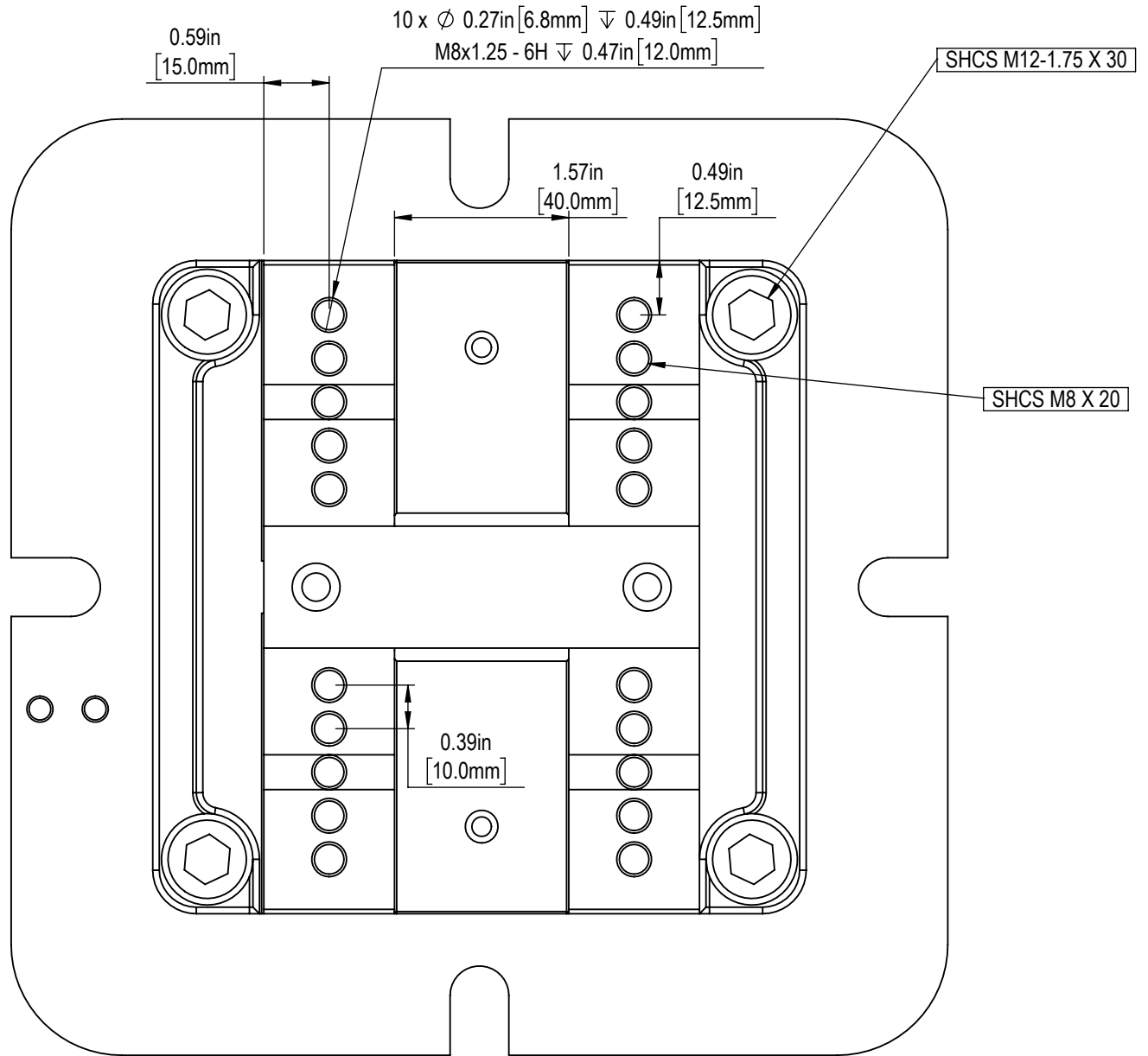
Incorrect

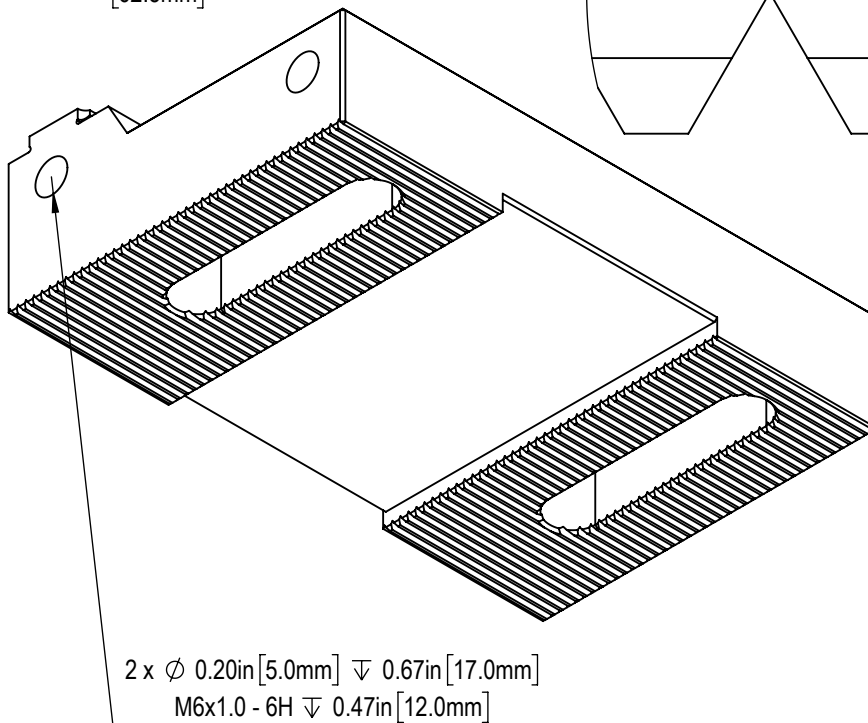
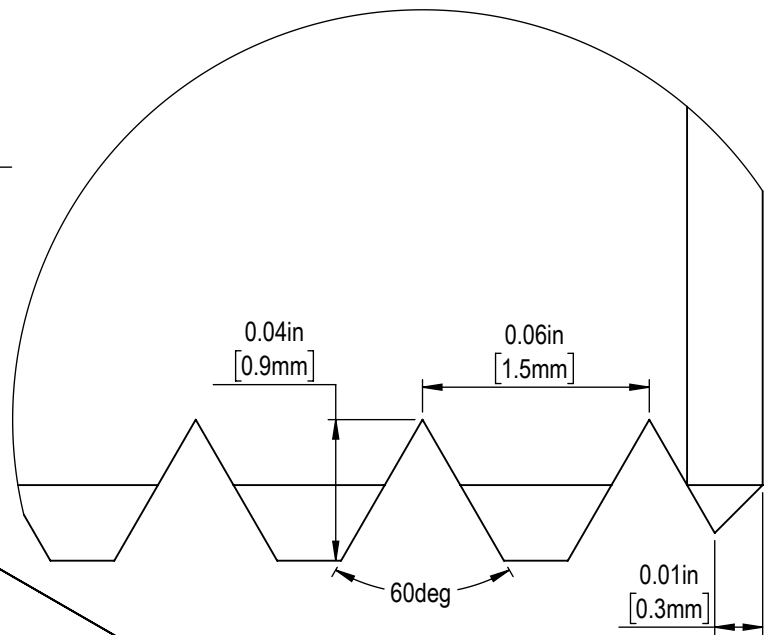
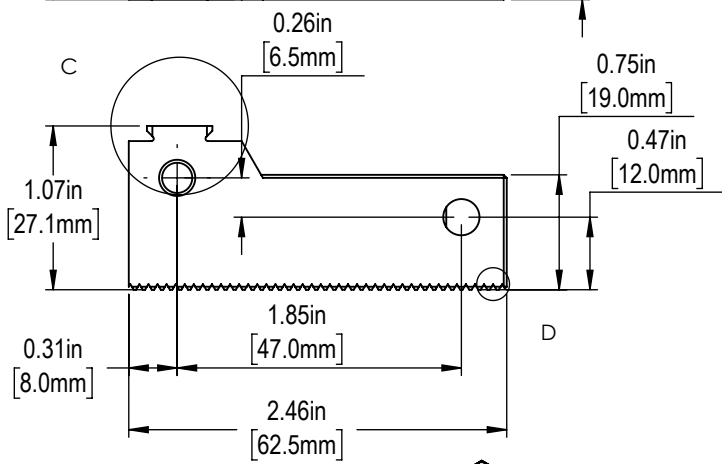
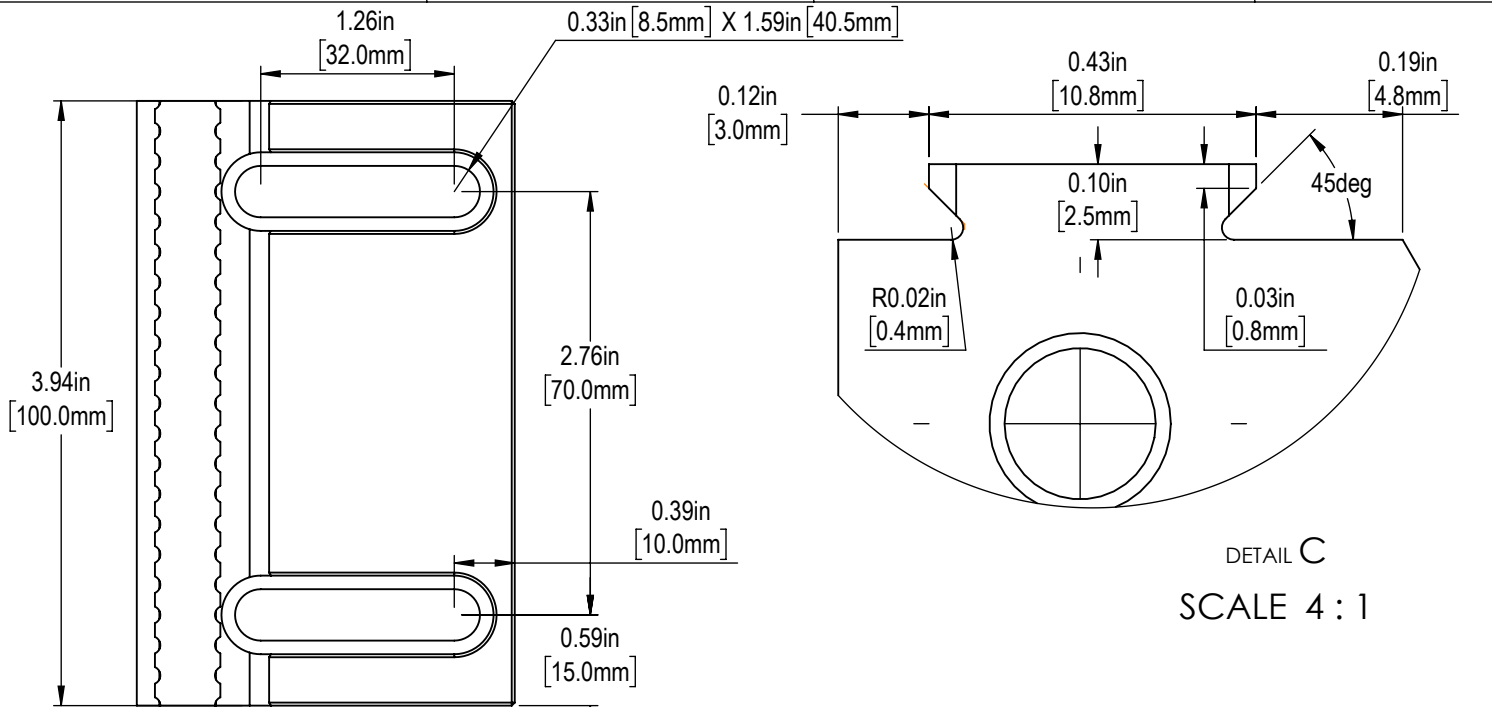


Correct

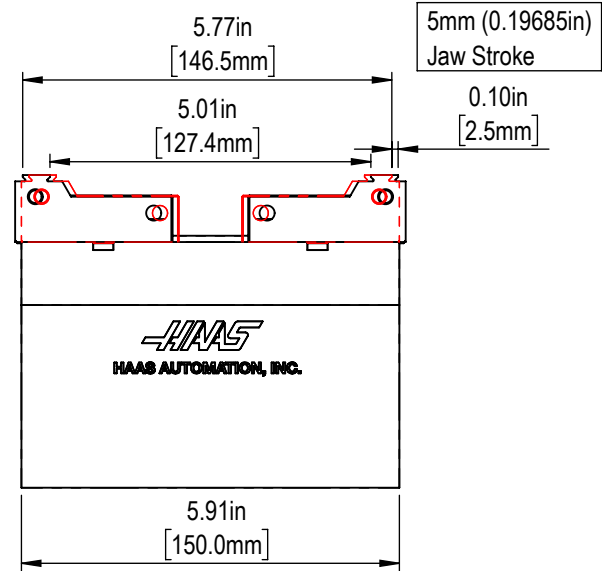
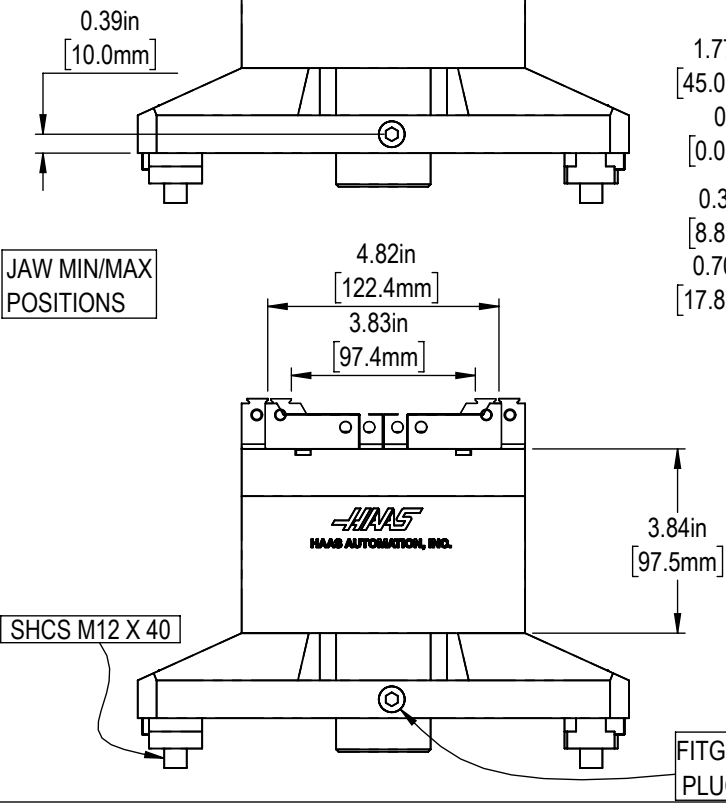
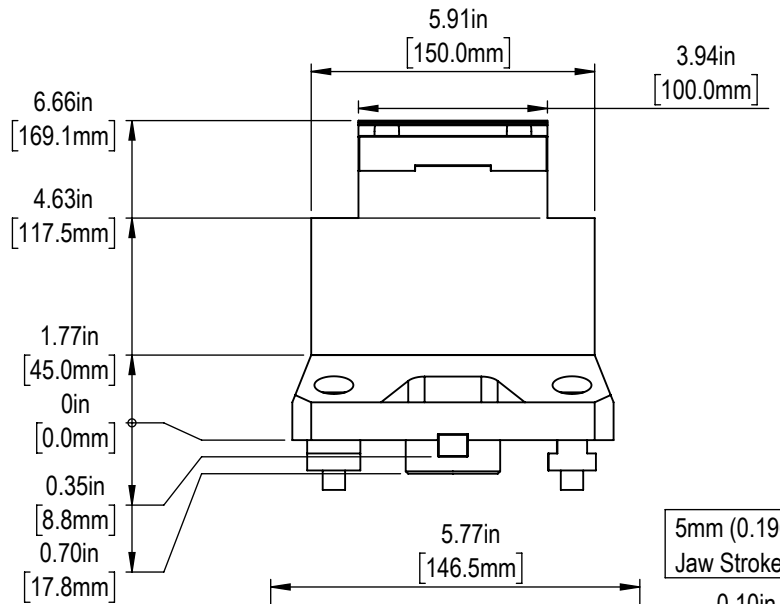
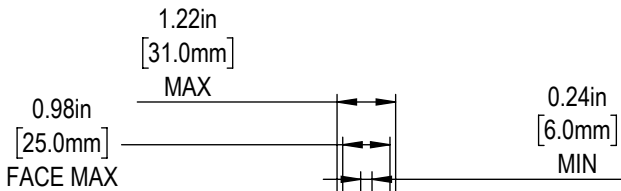
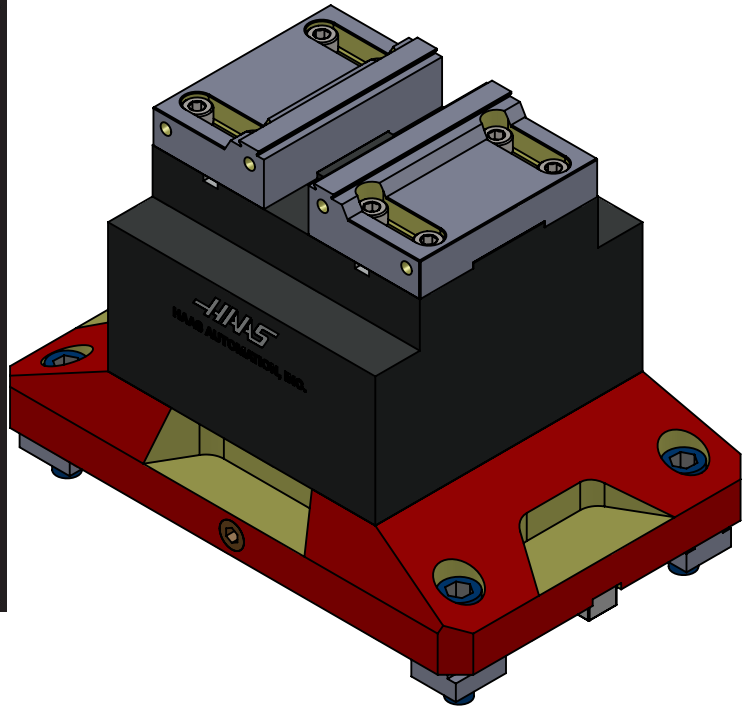
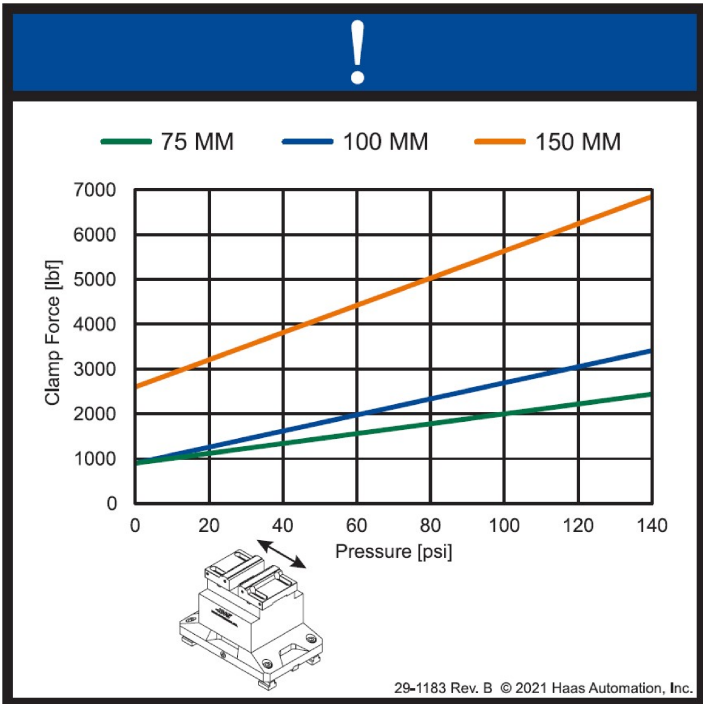


Warning: Off-centered clamping will result in damage to vise not covered under warranty



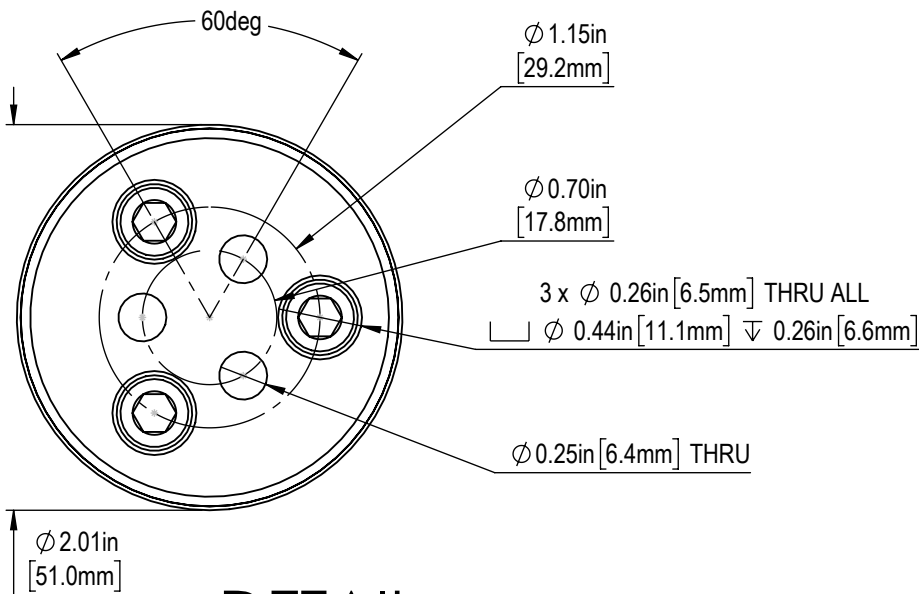
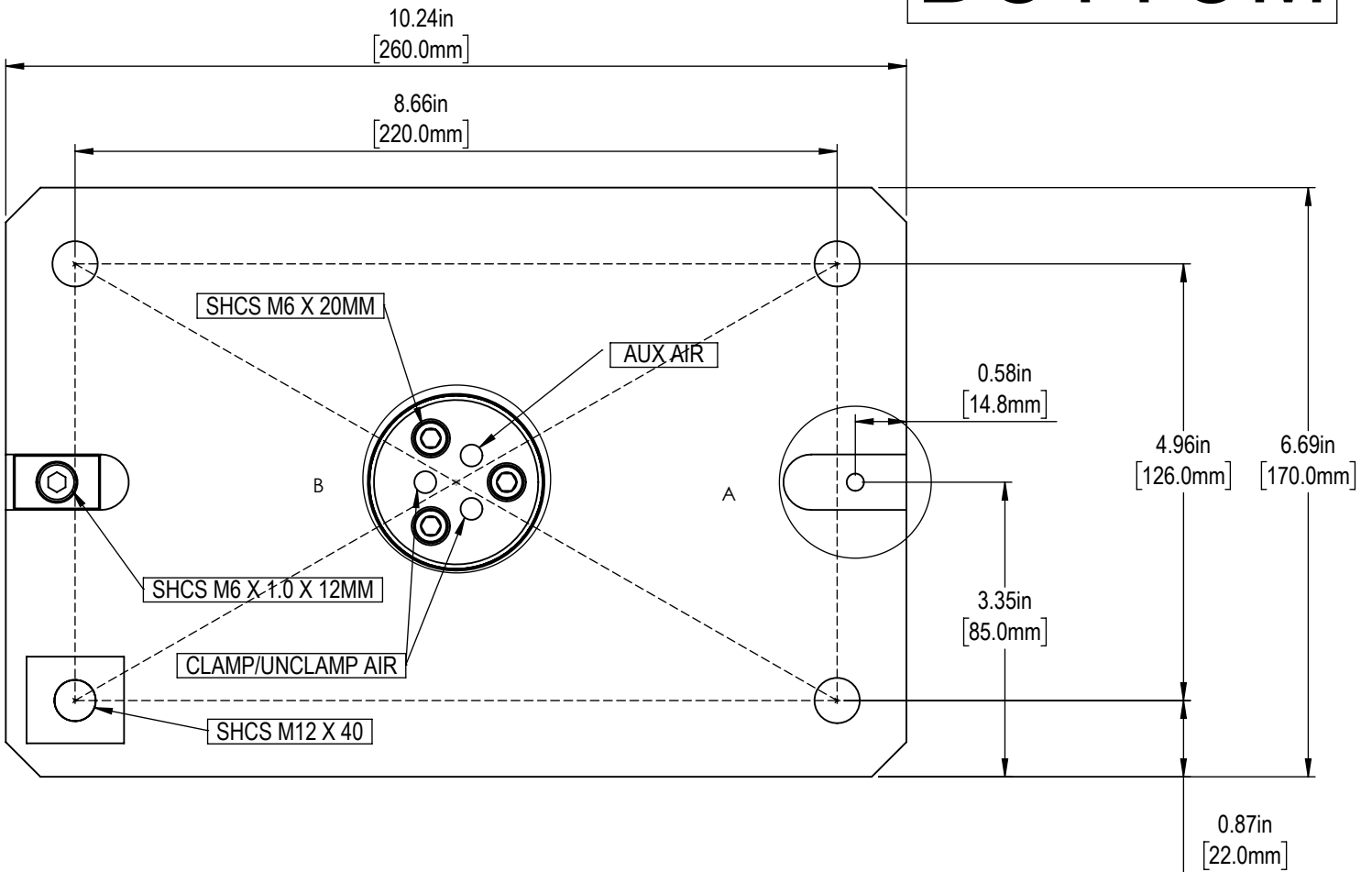


MAXIMUM CLAMPING FORCE:  
3300 LBS (14.7KN) AT 130 PSI (9 BAR).

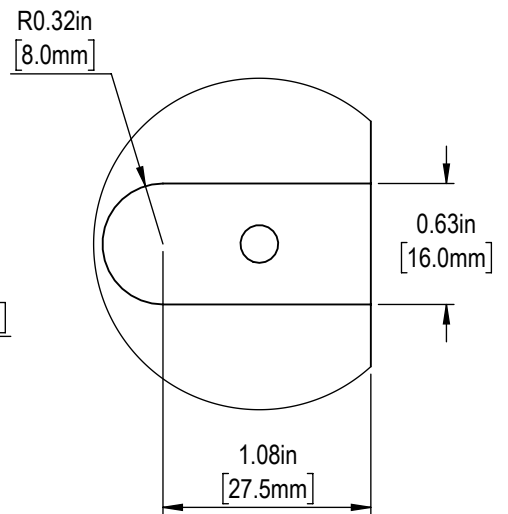


\*Due to continual product improvements, dimensions are subject to change without notice

# BOTTOM



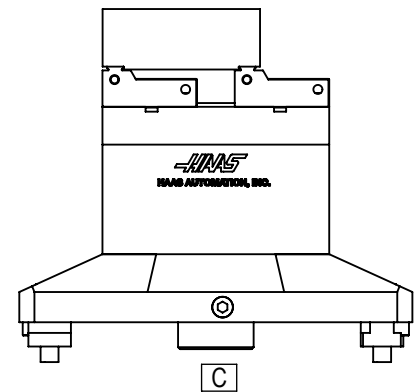
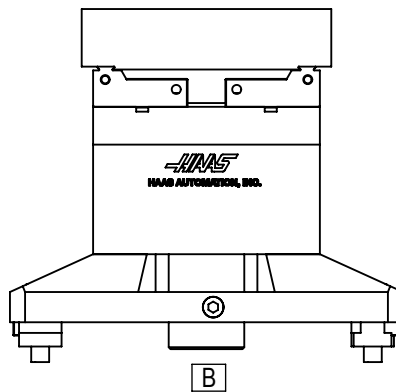
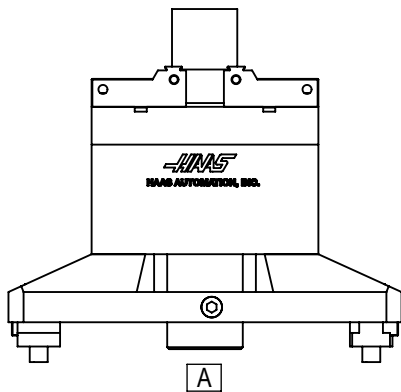
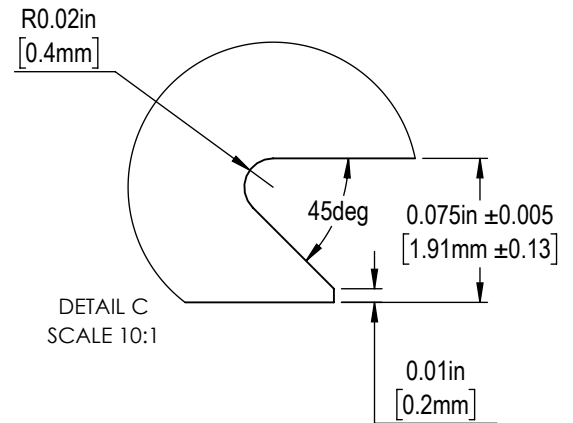
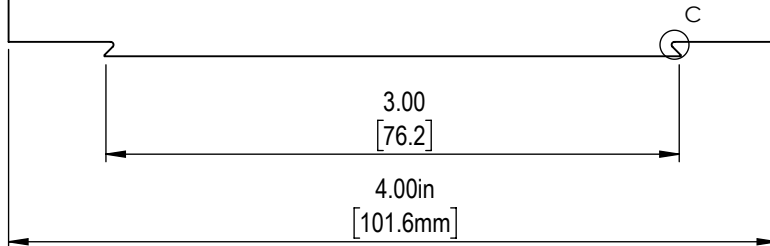
**DETAIL B**  
SCALE 1:1



**DETAIL A**  
SCALE 1:1



Dovetail width is recommended  
to be 75% of material width

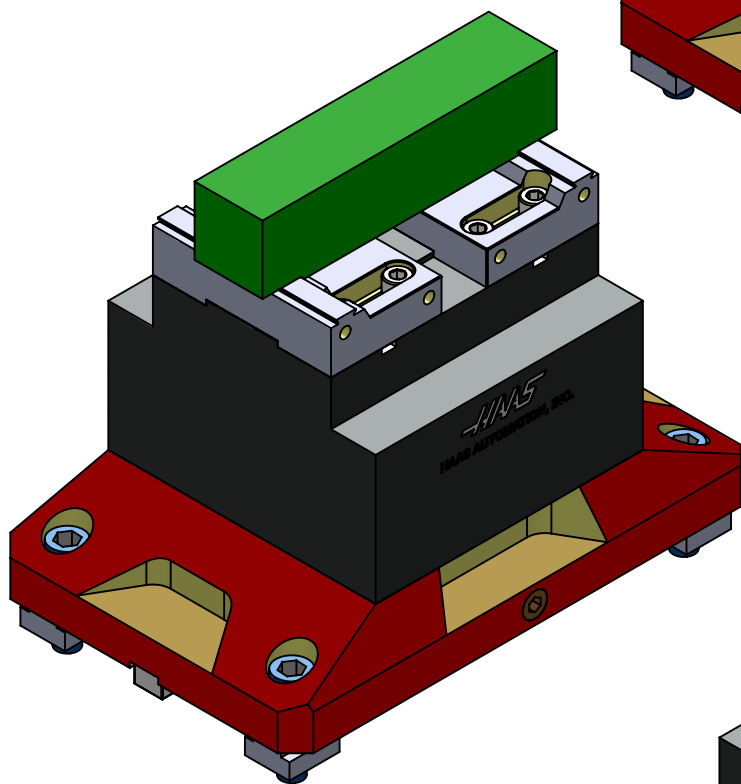
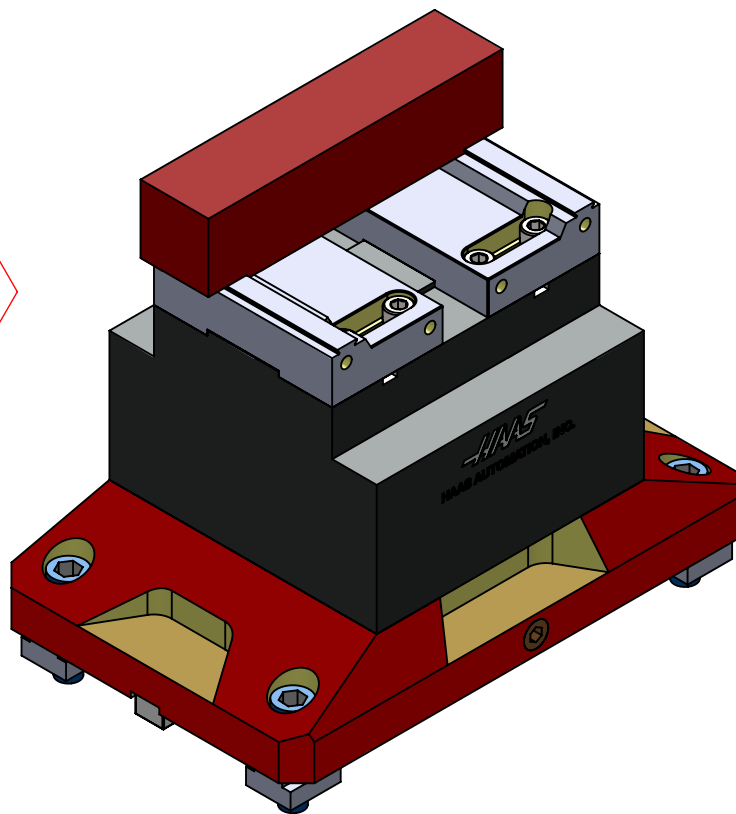


**Note:**

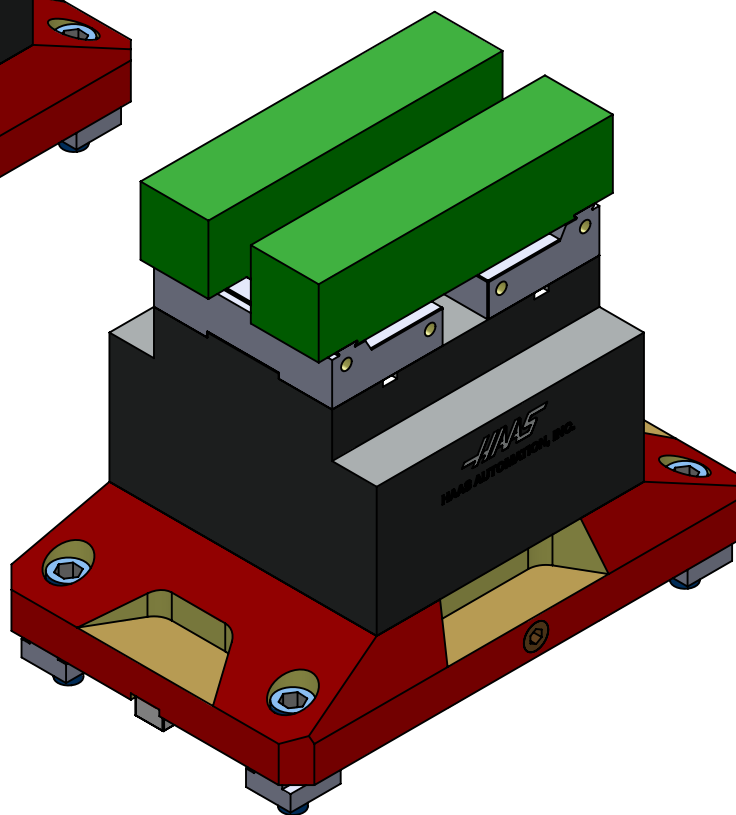
1. Off centered clamping is not allowed. Workpiece must be centered or balanced on opposite side or damage will occur.
2. Jaw stroke =5mm per side, 10mm total.
3. Vise Clamping Range:
  - [A] Both Jaws Inward 0.4 - 1.6in [10-40mm]
  - [B] Both Jaws Outward 3.9-6.7in [99-170mm]
  - [C] One Jaw Inward, One Jaw Outward 2.2-5.6in [56-142mm]

**Note: Dovetail clamping is not required, but can be utilized for more secure clamping as needed**

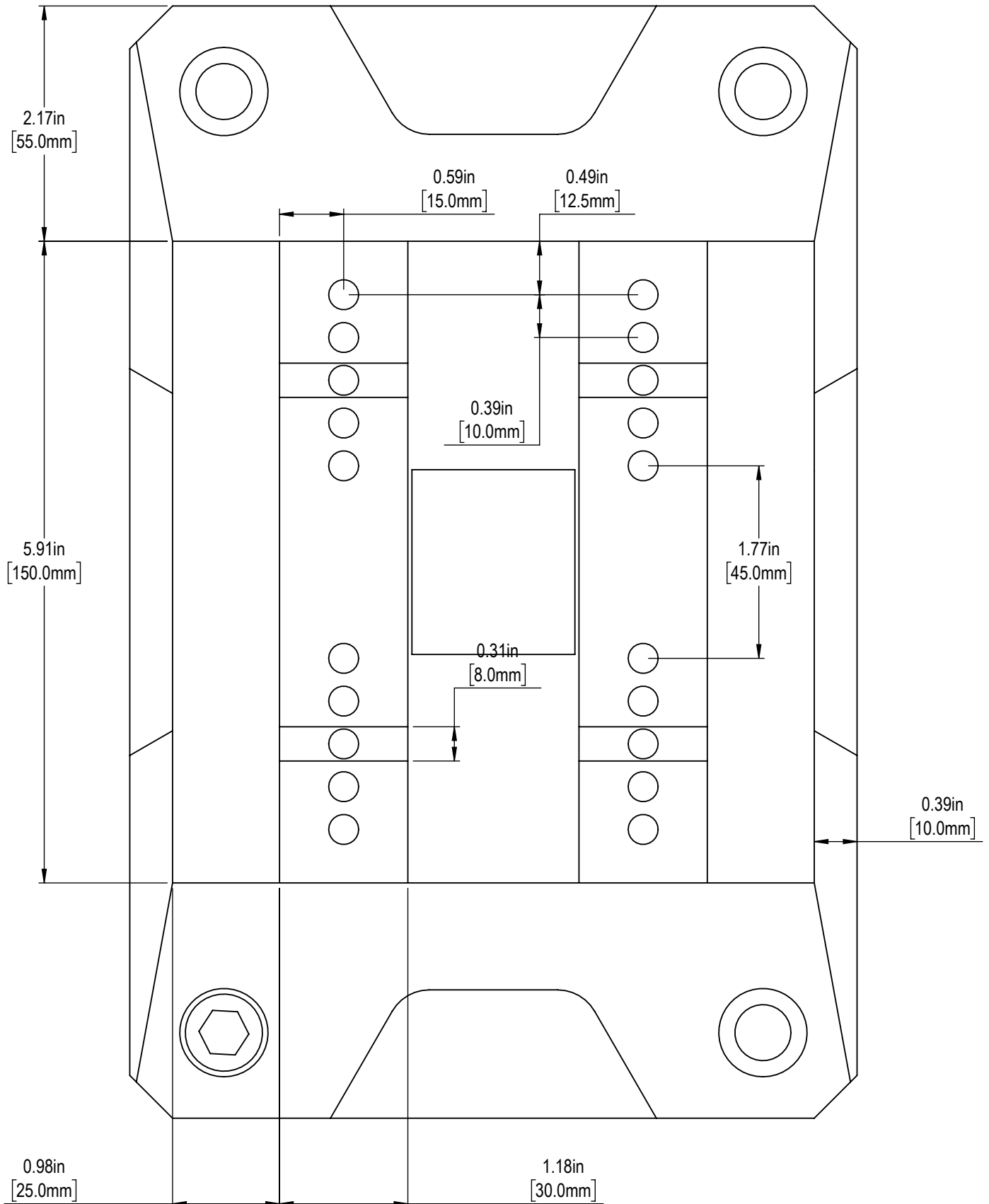
Incorrect

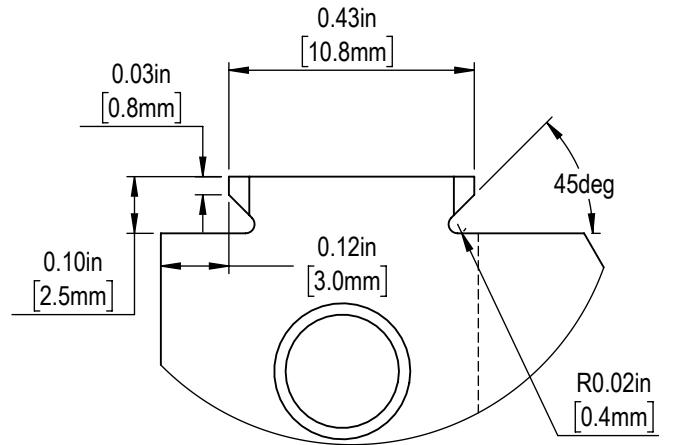
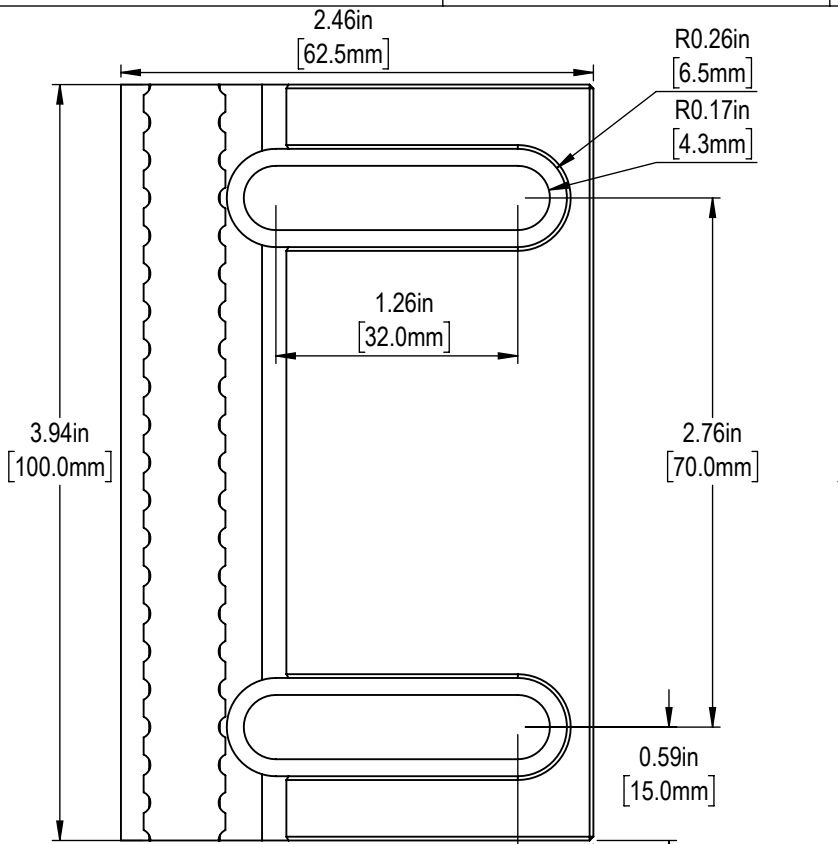


Correct

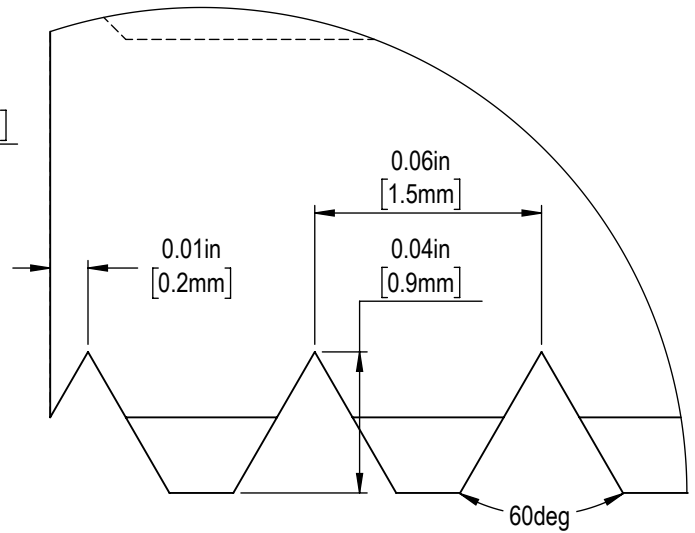
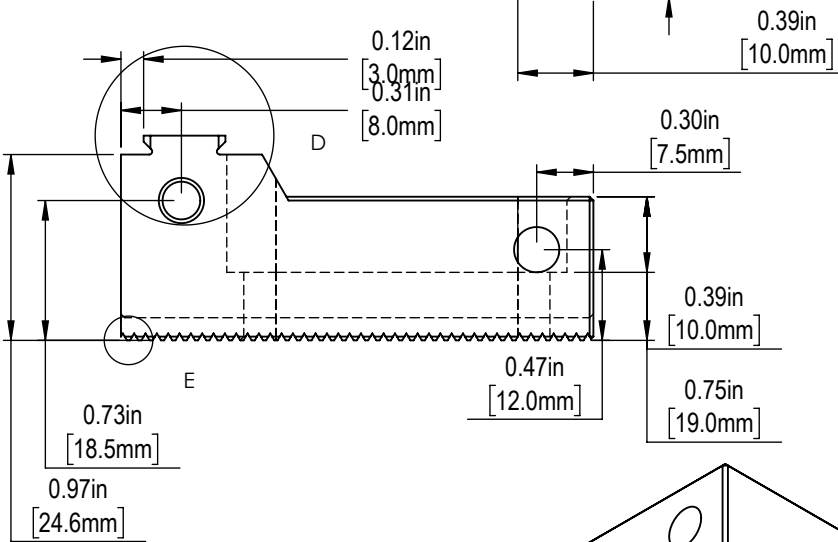


Warning: Off-centered clamping will result in damage to vise not covered under warranty

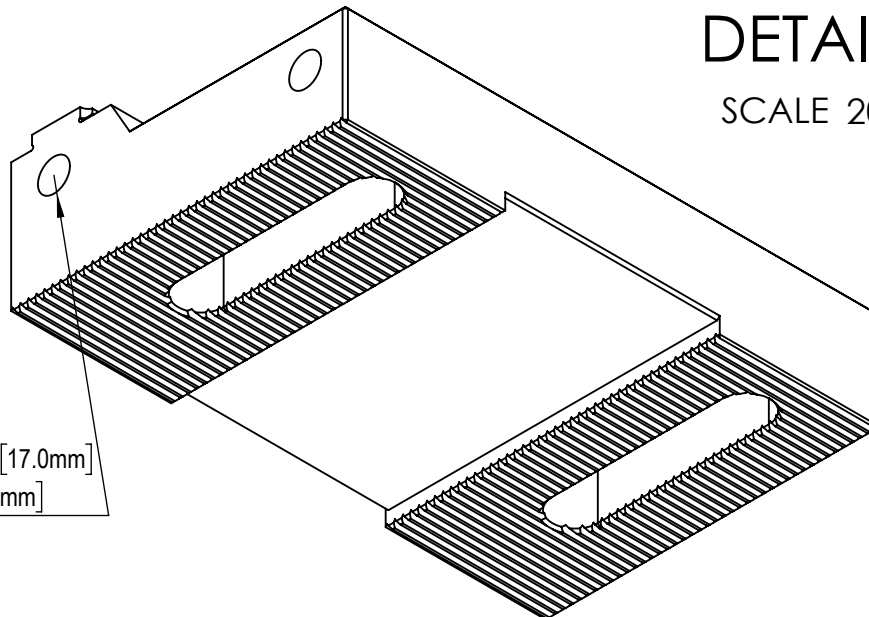




**DETAIL D**  
SCALE 3:1



**DETAIL E**  
SCALE 20:1



2 x  $\varnothing$  0.20in [5.0mm]  $\nabla$  0.67in [17.0mm]  
M6x1.0 - 6H  $\nabla$  0.47in [12.0mm]