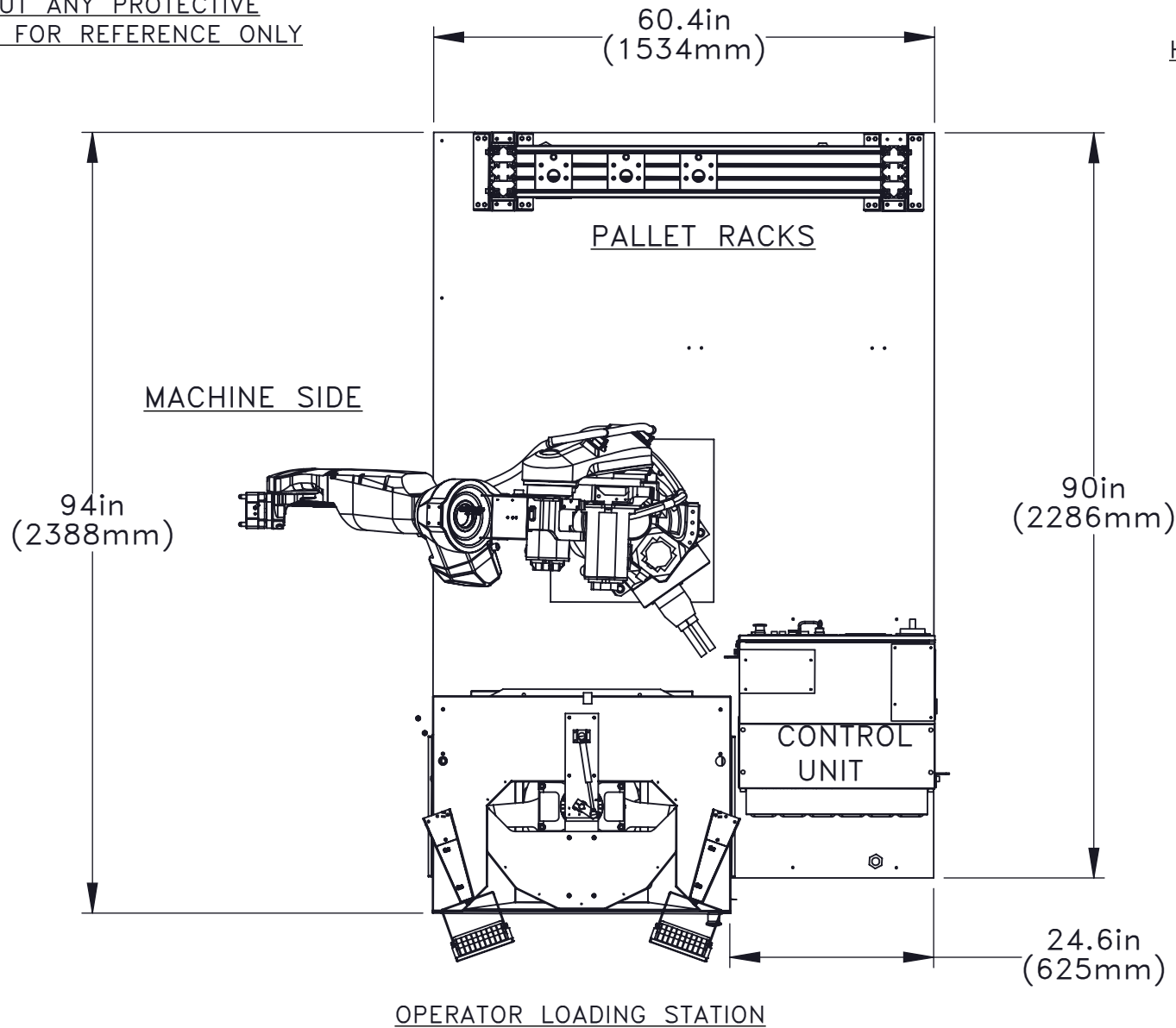




FOOTPRINT SHOWN HERE
WITHOUT ANY PROTECTIVE
BARRIERS FOR REFERENCE ONLY

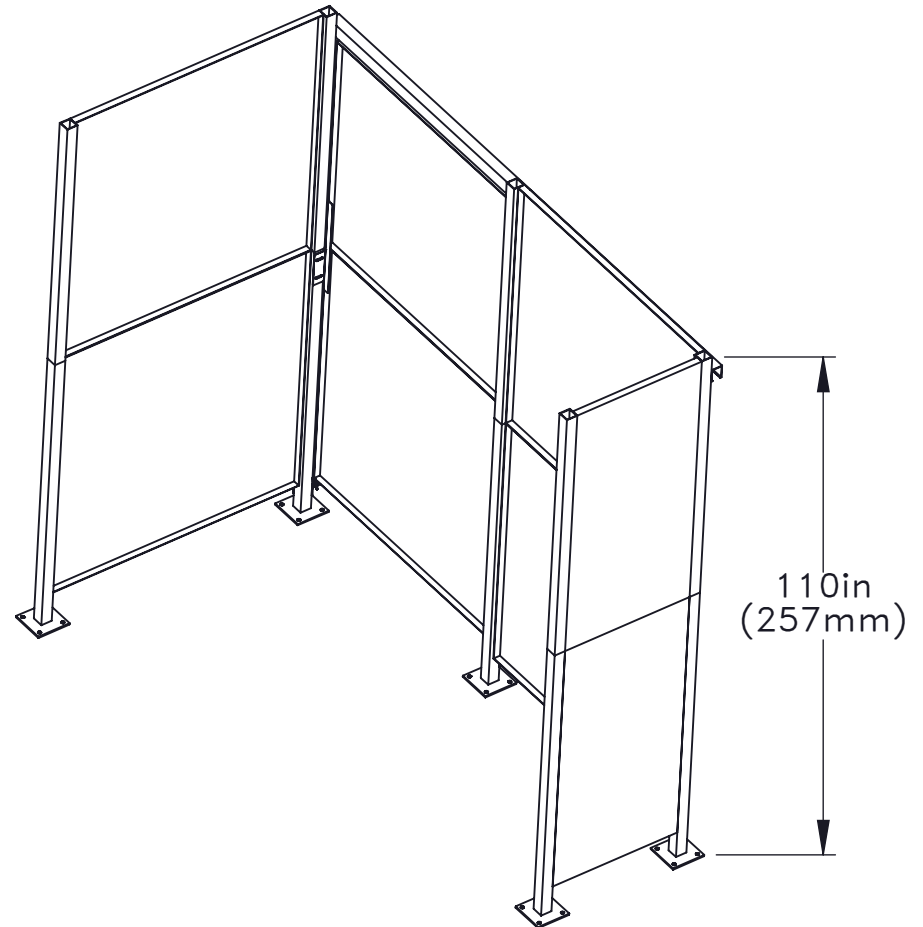
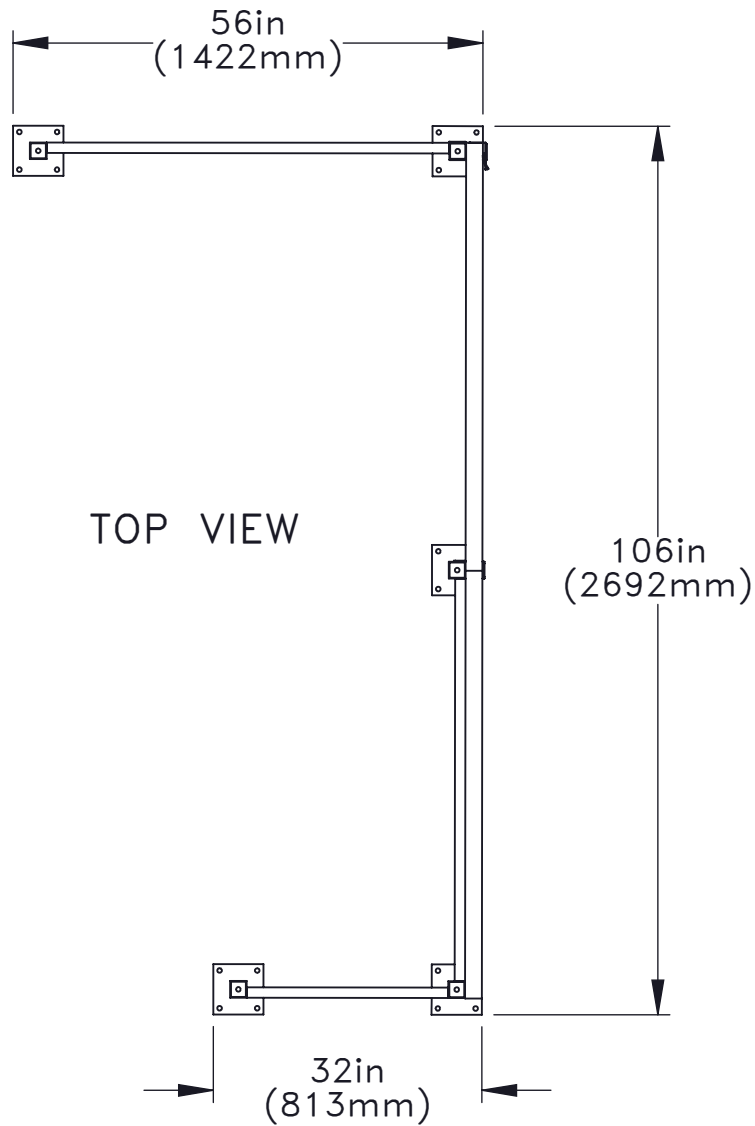
PROTECTIVE
BARRIERS
AVAILABLE AT
HAASTOOLING.COM



OPERATOR LOADING STATION



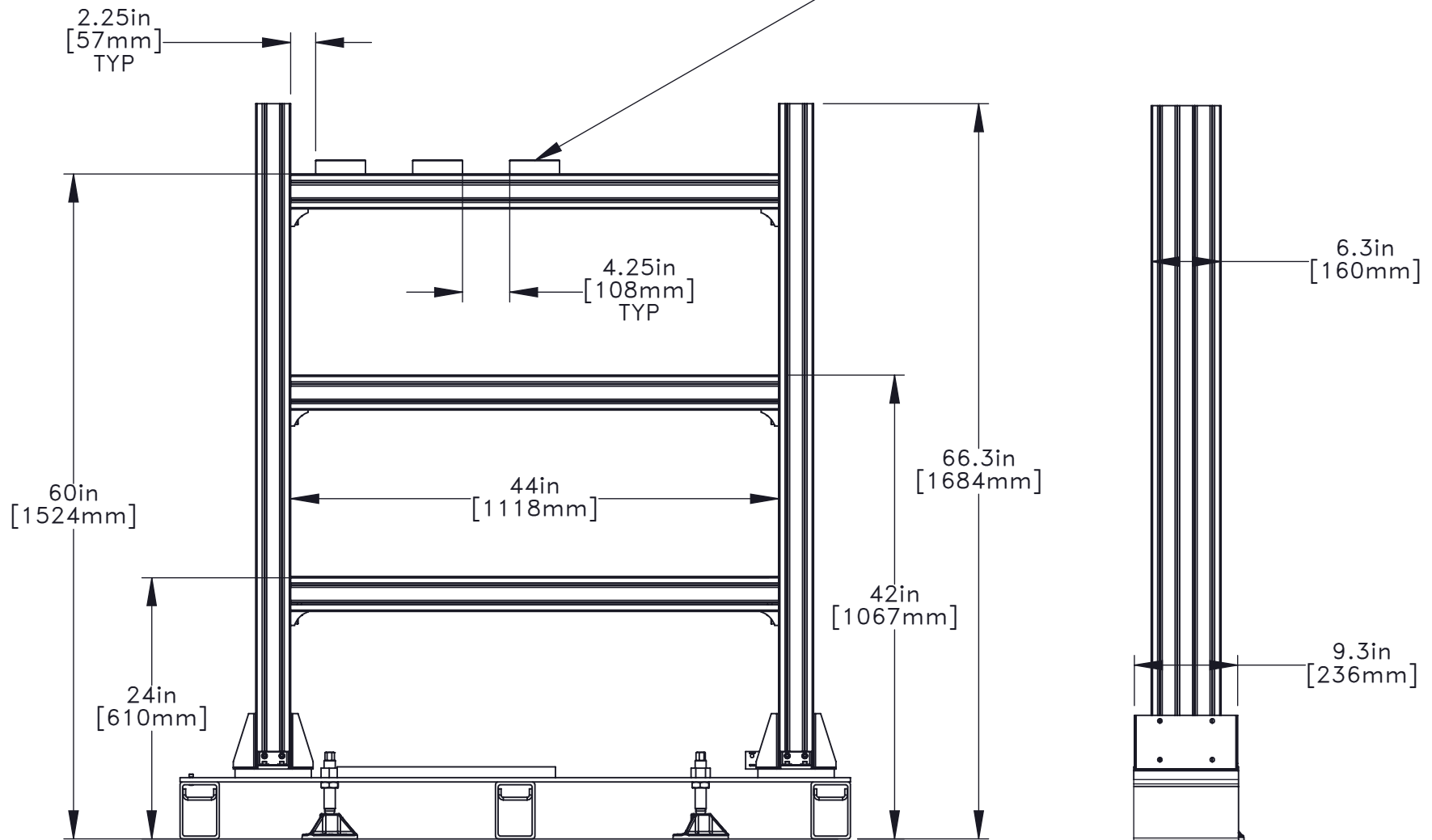
FENCE IS A REQUIREMENT FOR HAE REGION ONLY
IT IS OPTIONAL IN ALL OTHER REGIONS

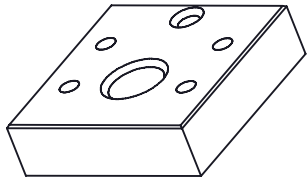


THE OPTIONAL LIGHT CURTAIN AND FENCE
COVER APPROXIMATELY THE SAME
DEPTH AND WIDTH

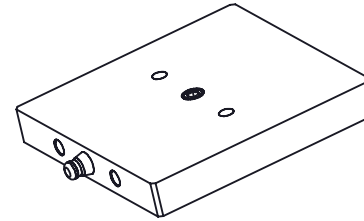
There is no limit to number of Pallets that can be implemented. The height of the Shelves may be adjusted as needed. The Pallet Locations need to be equally spaced in the vertical and horizontal direction.

Zero Point Pallet Holders for RPL 3 each (09-0733) Included with RPL. Additional Holders and Pallets available on HaasTooling.com

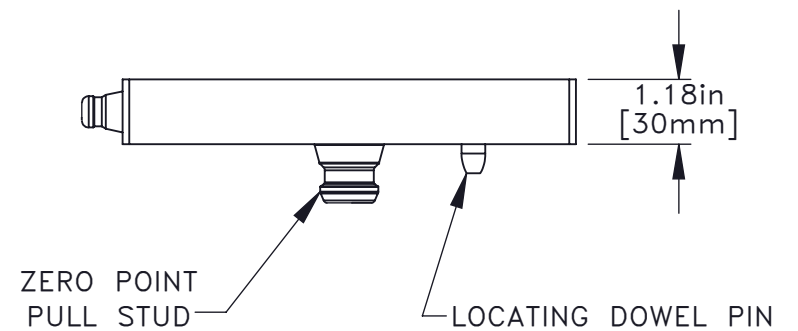
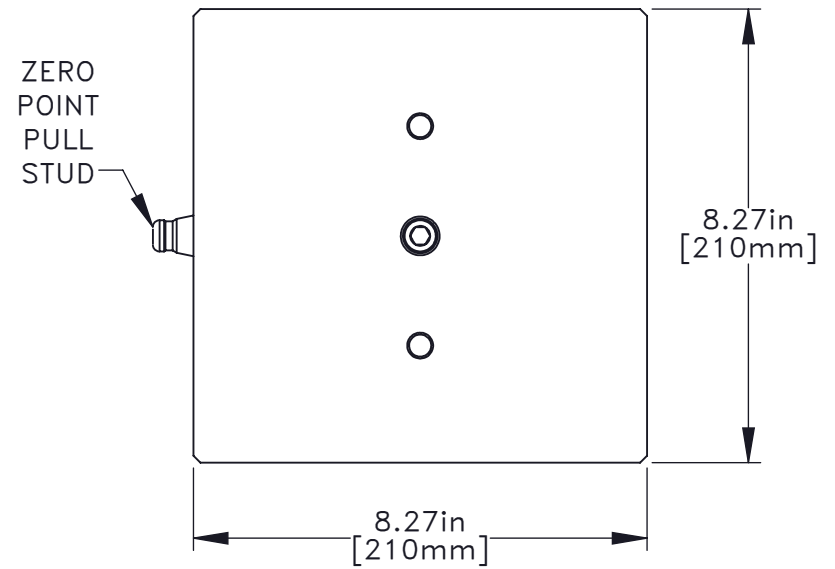
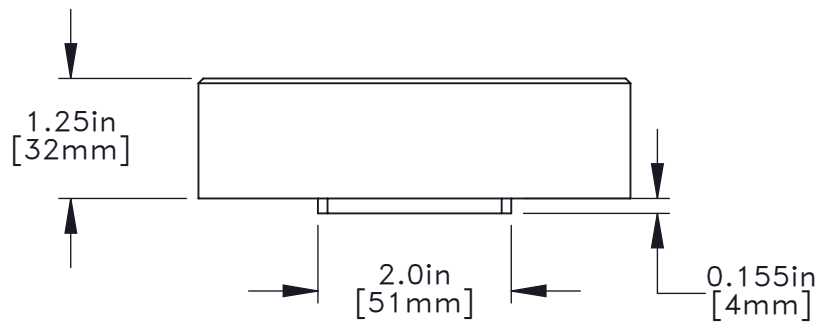
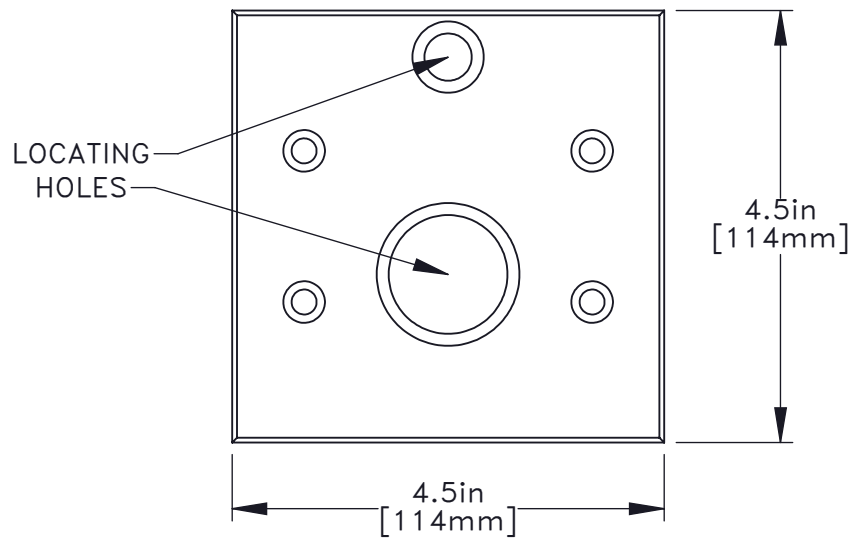




Zero Point Pallet Holders for RPL
3 each (09-0733) Included
Additional Holders available
on HaasTooling.com

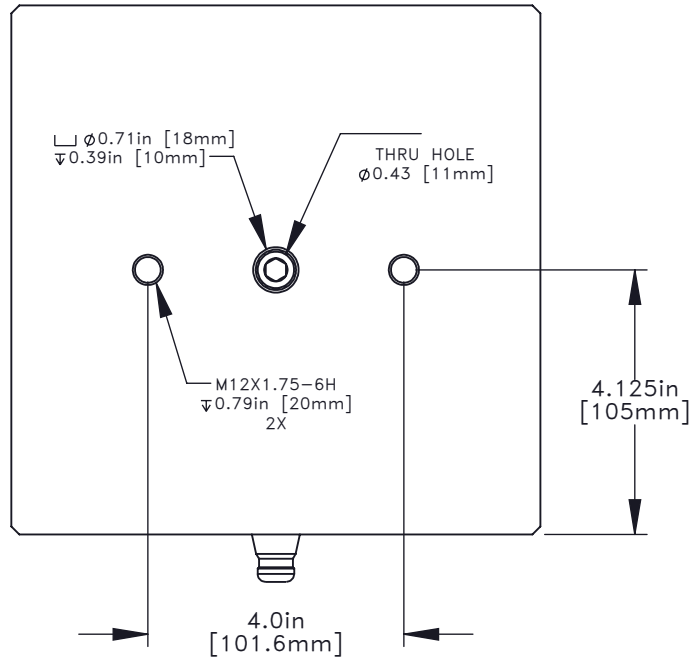


RPL Pallet Kit
3 each (09-0732) included
Additional Pallets available
on HaasTooling.com

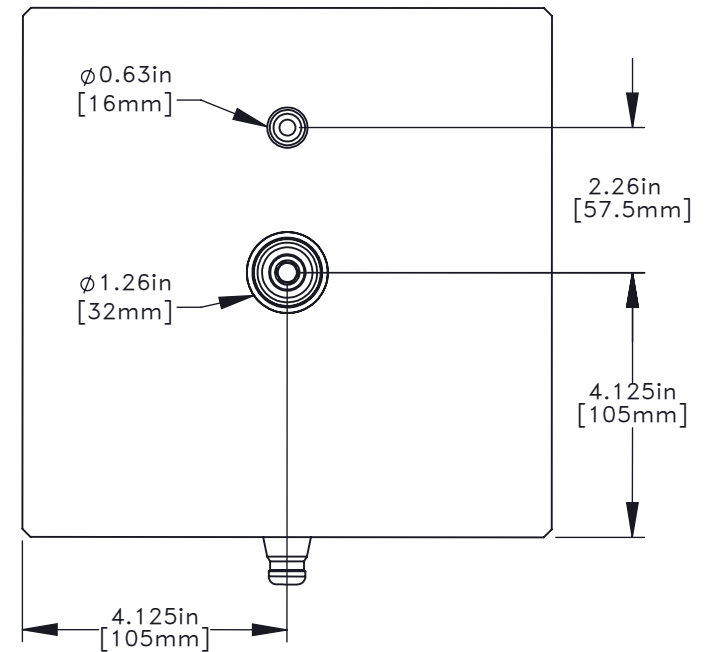




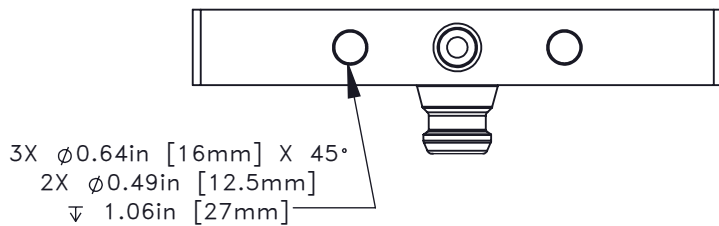
TOP VIEW



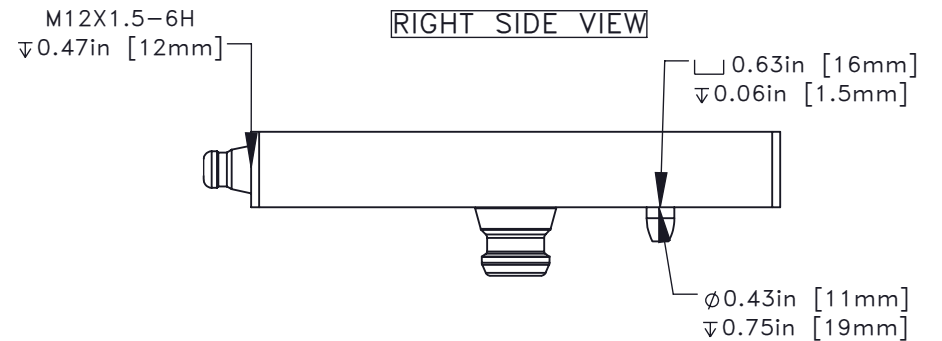
BOTTOM VIEW



FRONT VIEW



RIGHT SIDE VIEW



There is up to 15in (381mm) diameter of clearance in the loading station

The maximum part size will be determined by the clearance on the pallet racks

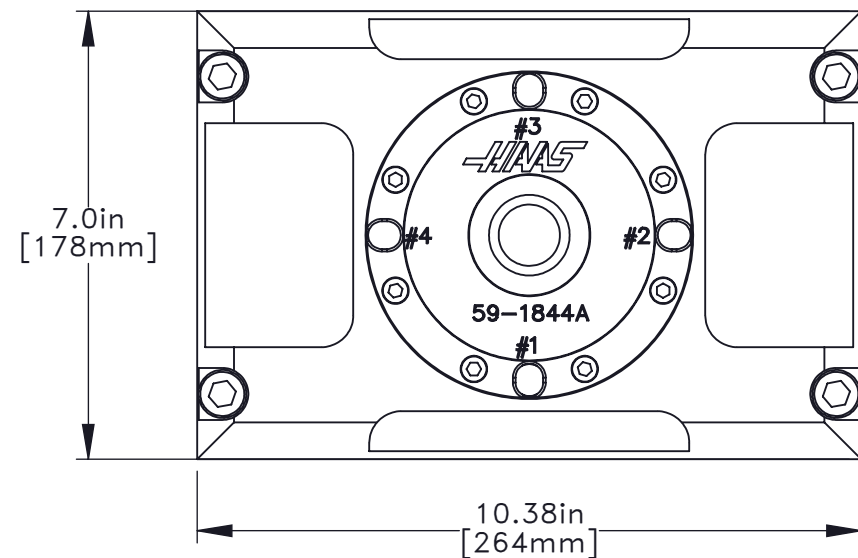
Pallet is held without air in the loading station. Clamping force is 2,204lbf (9,804N)

The maximum part weight is determined by the robot maximum capacity, minus the total weight of the pallet, the end effector, the workholding on the pallet and the part

210mm Zero Point Pallet weighs 9lb (4.1kg)

The standard gripper (End Effector) weight is 3lb (1.4kg)

TOP VIEW



SIDE VIEW

