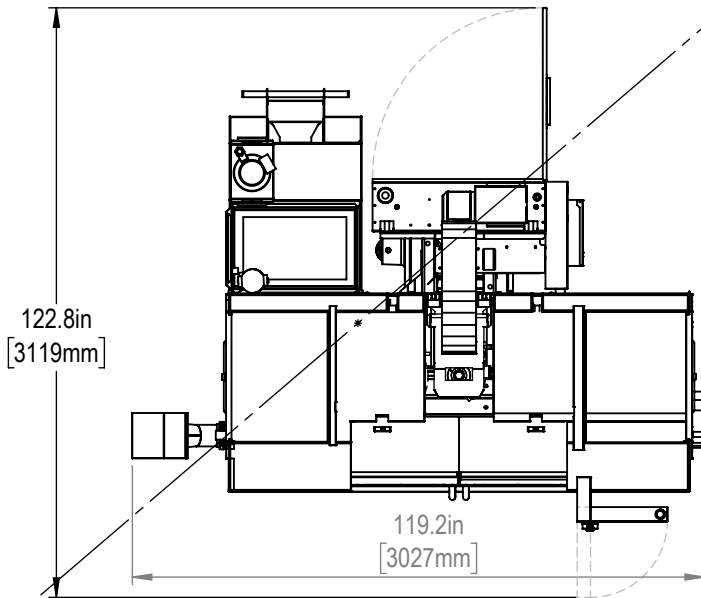
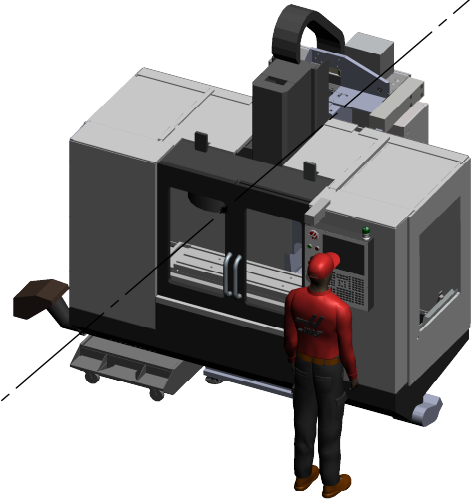
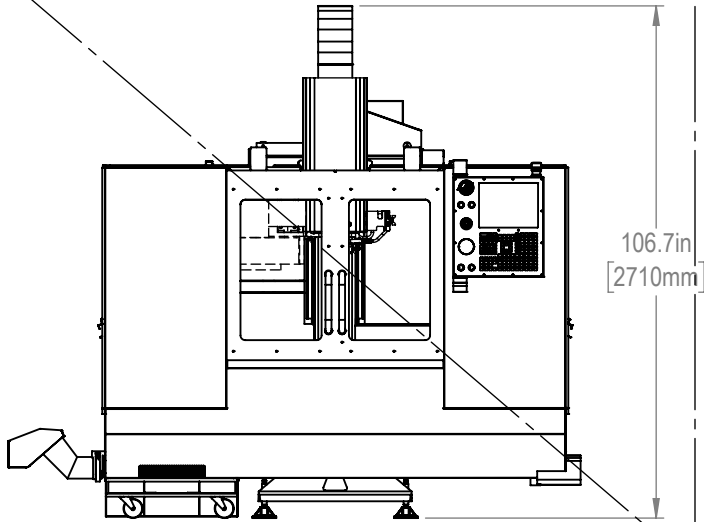
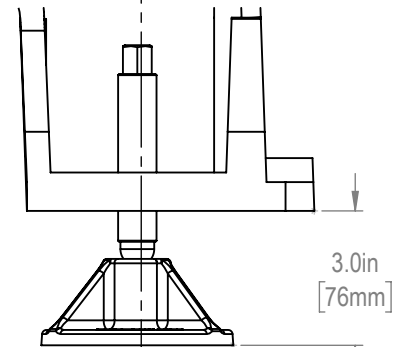




Installed Dimensions



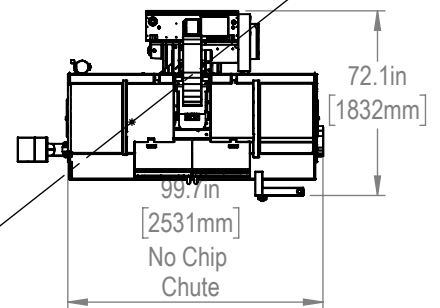
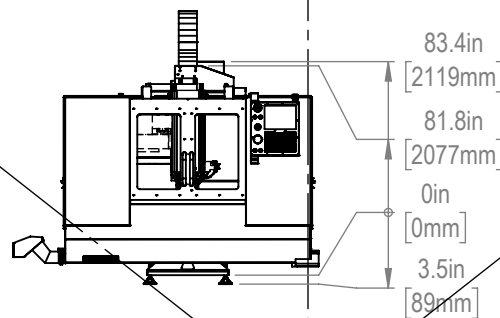
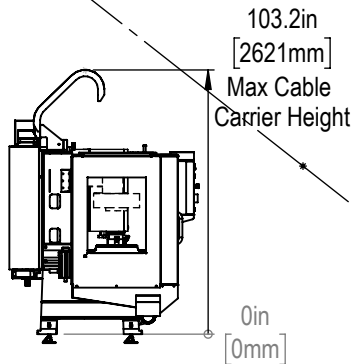
Leveling Pad Height



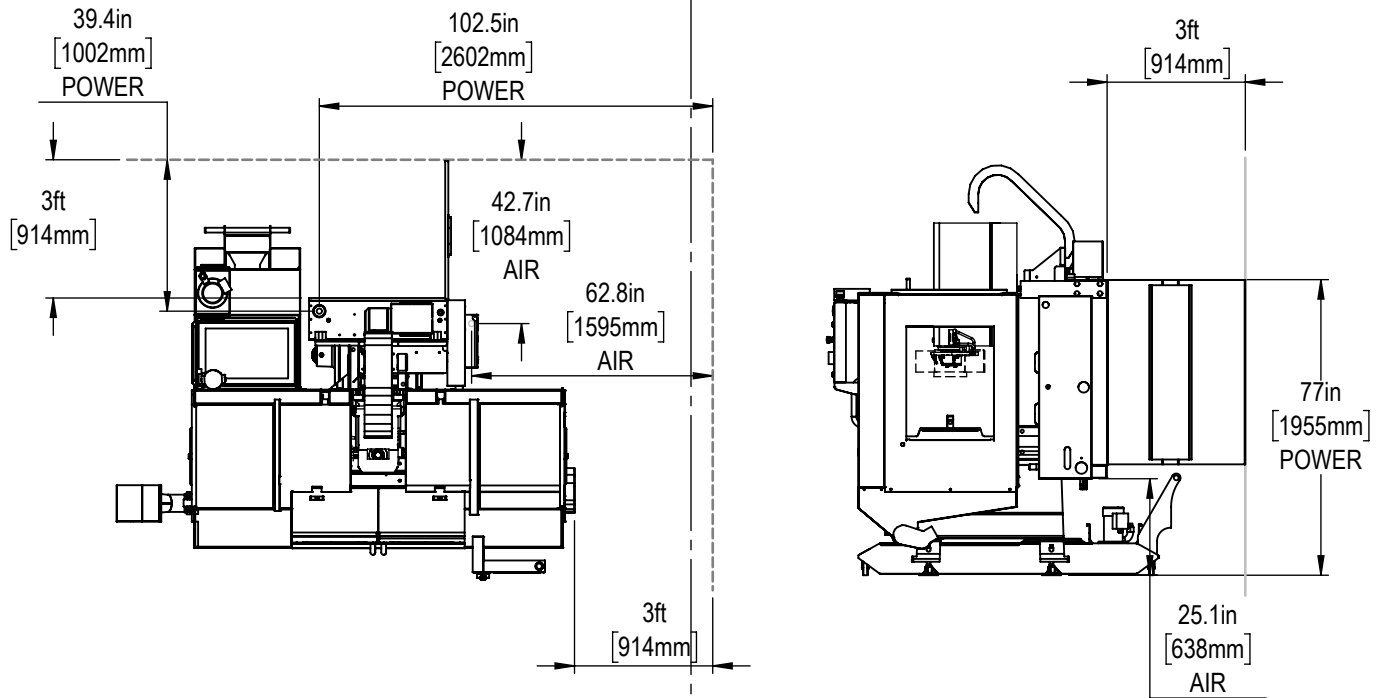
\*All Height Dimensions Based on Suggested Leveling Pad Height

Machine Lowest at 79.5" (2019mm)

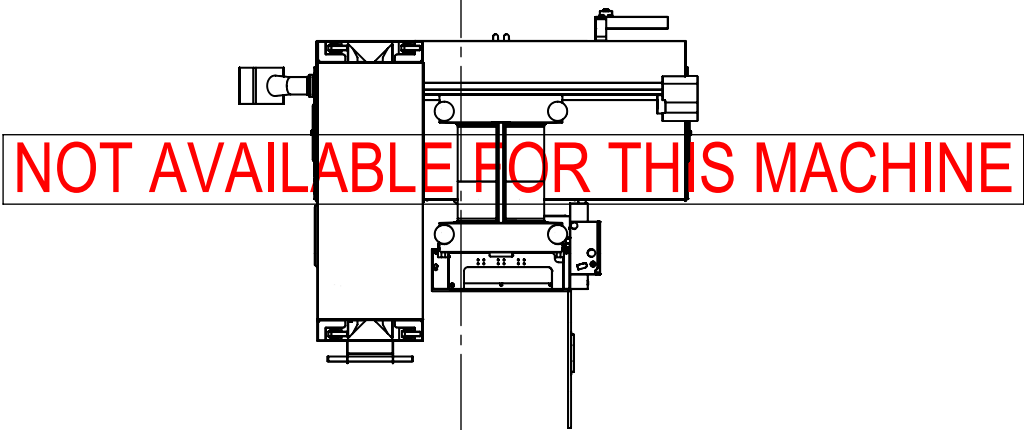
Shipping Dimensions



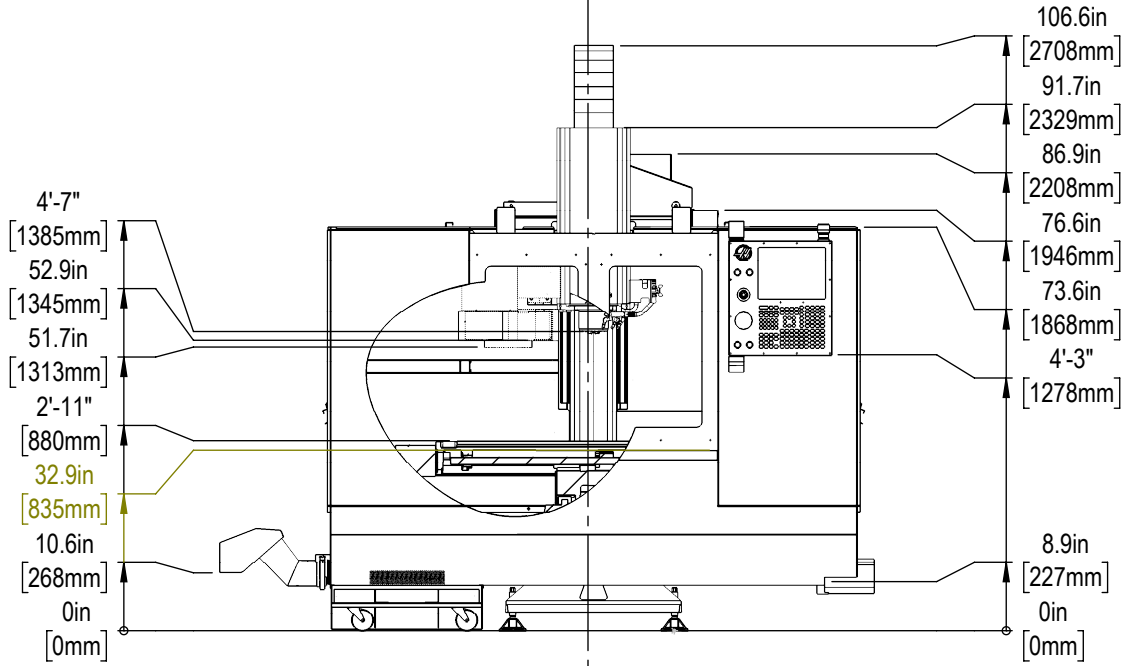
AIR AND POWER



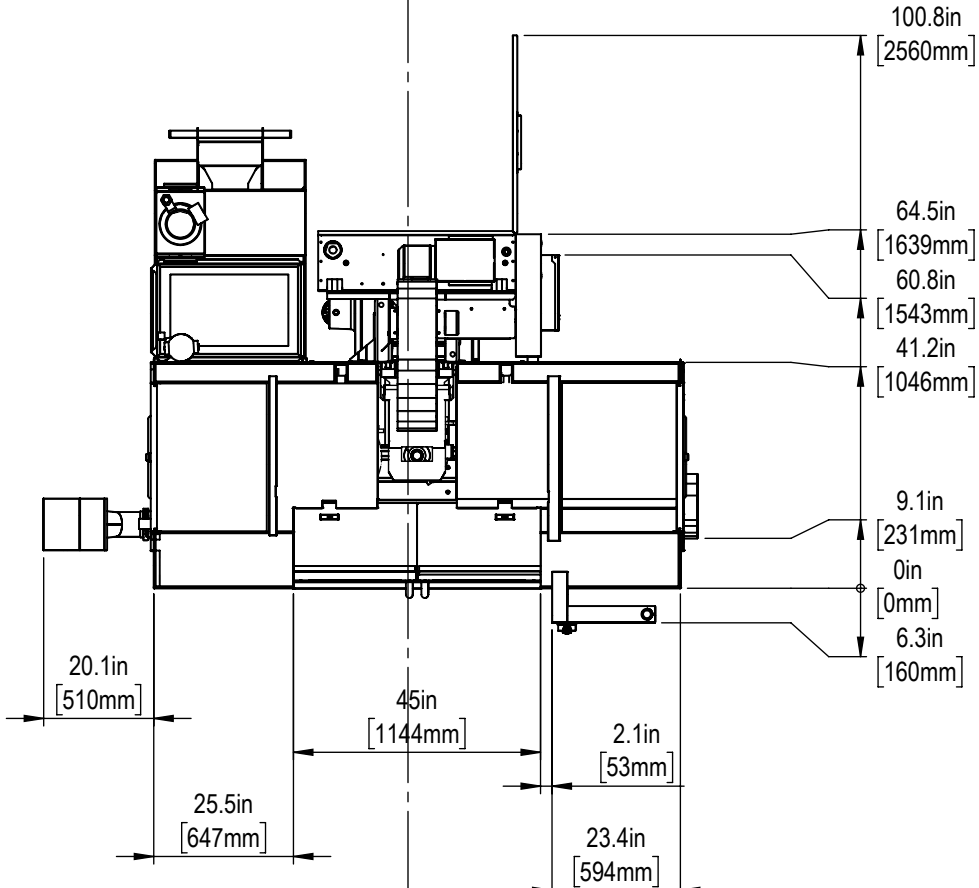
ANCHORING PATTERN



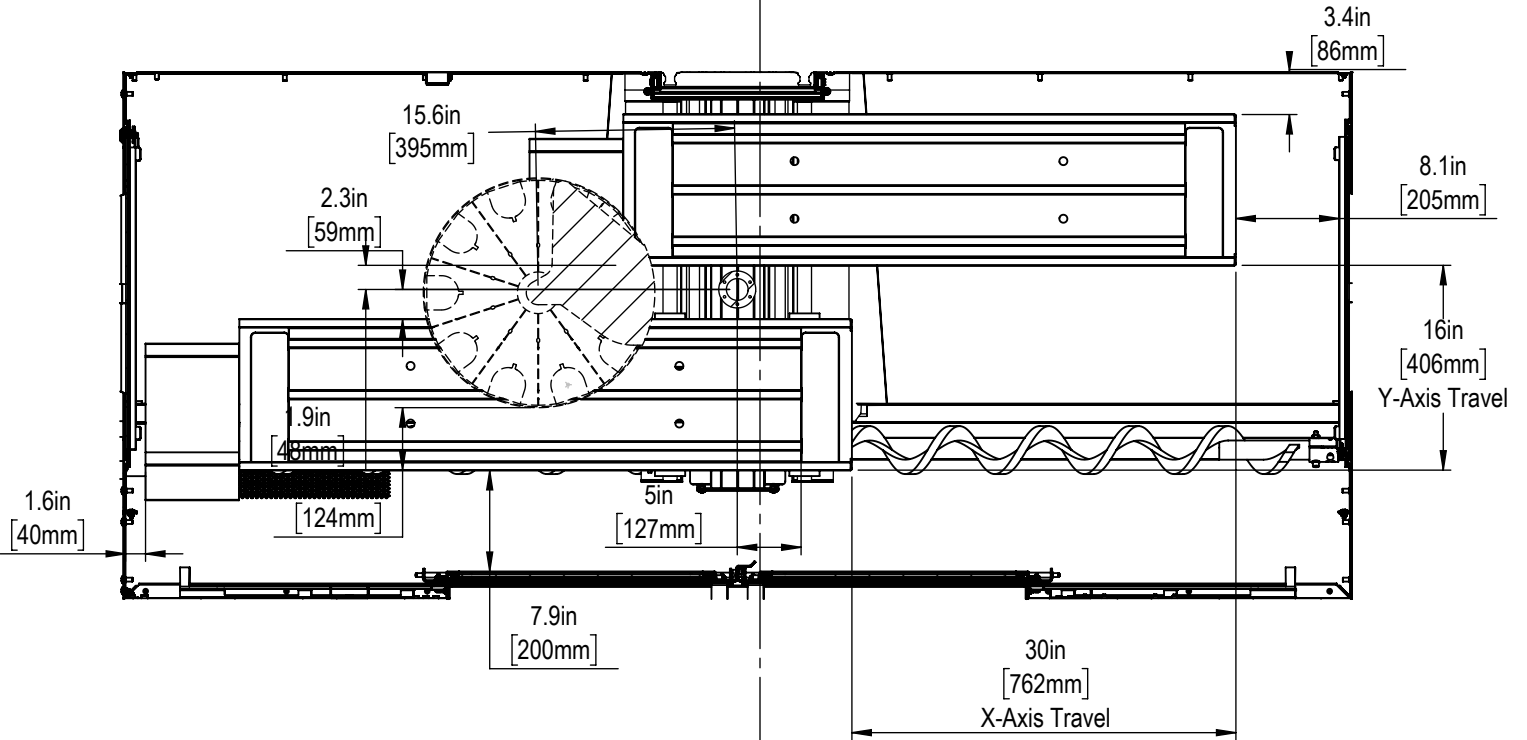
HEIGHT BREAKDOWN



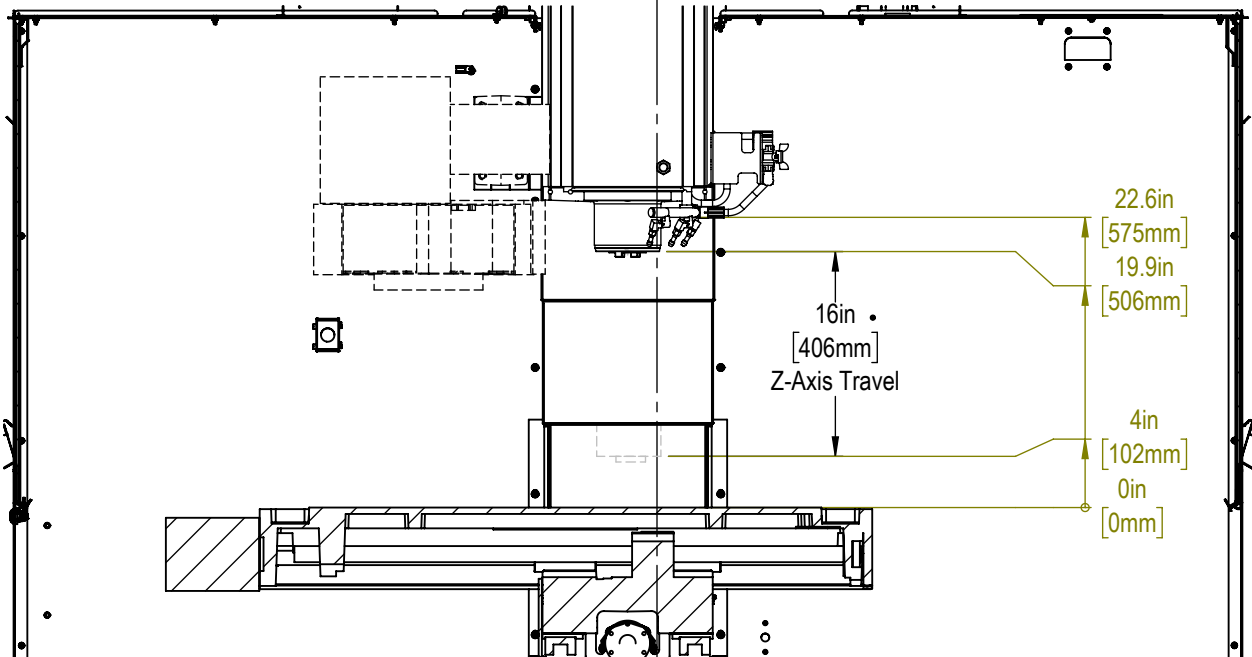
WIDTH BREAKDOWN

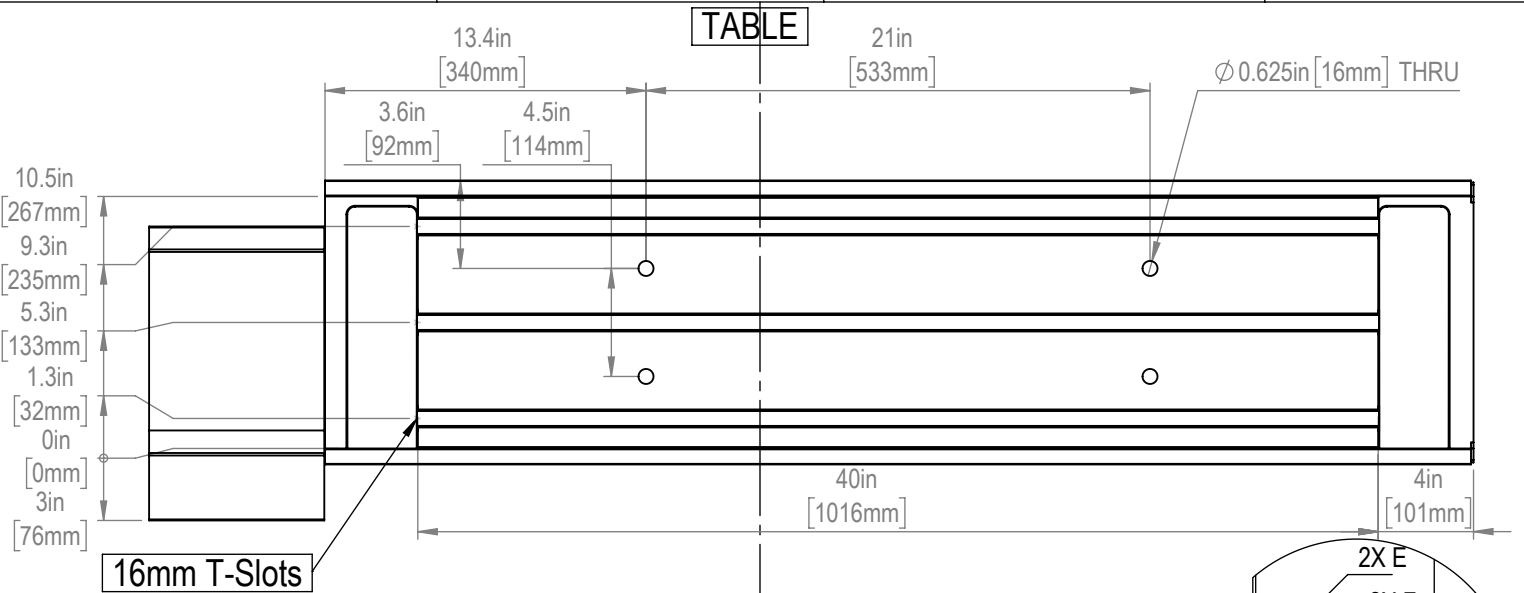


X&Y-AXIS TRAVEL

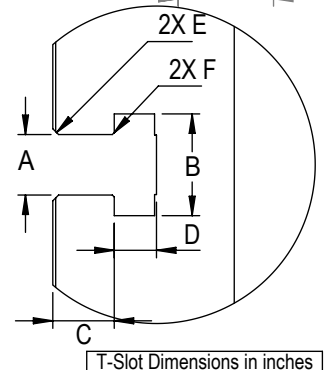


Z-AXIS TRAVEL

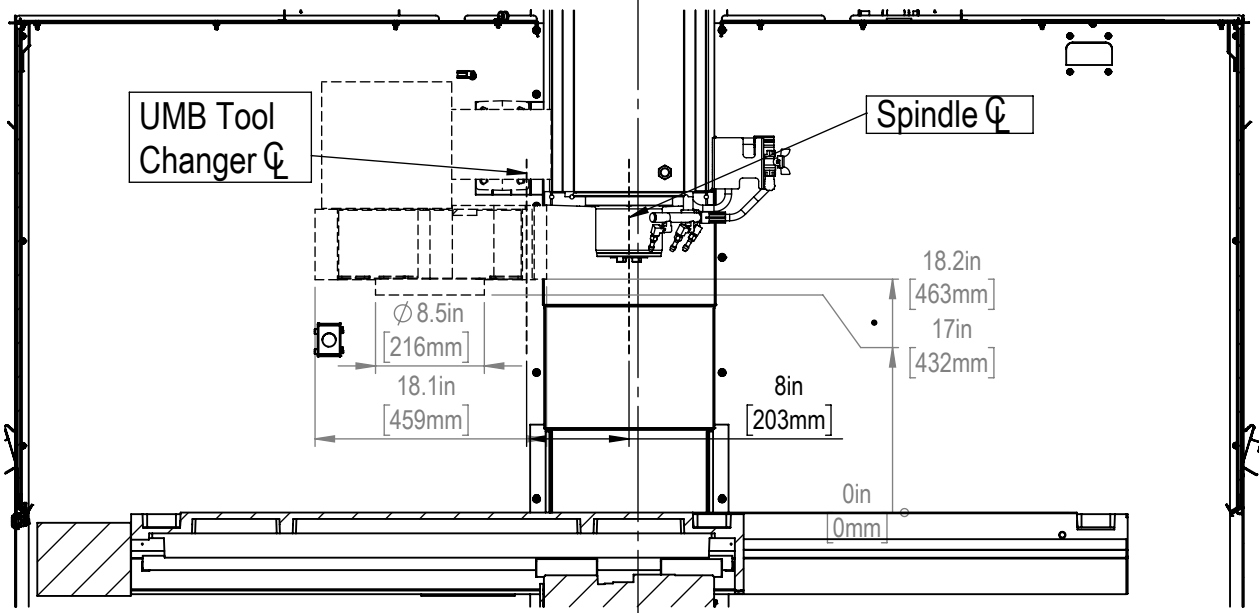




Slot Size	A	B	C	D	E	F
12mm	0.438 <sup>+0.002</sup> / <sub>-0.000</sub>	0.76 ± 0.02	0.310 ± 0.010	0.318 ± 0.010	0.03x45°	0.020x45°
16mm	0.628 ± 0.002	1.06 ± 0.02	0.640 ± 0.010	0.420 ± 0.010	0.06x45°	0.020x45°



**TOOL CHANGER**



All dimensions based on stackup of sheetmetal, subject to variation of 1/2" ( 13mm) Due to continual product improvements, dimensions are subject to change without notice