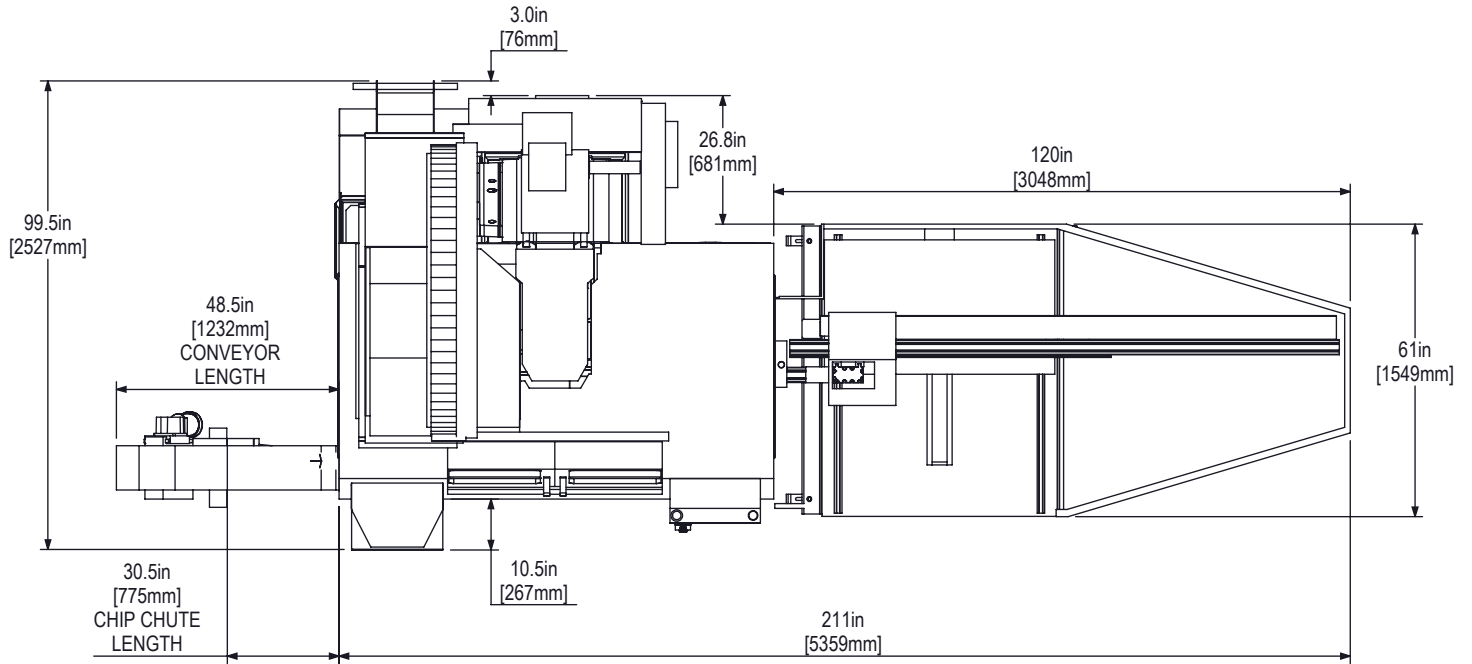
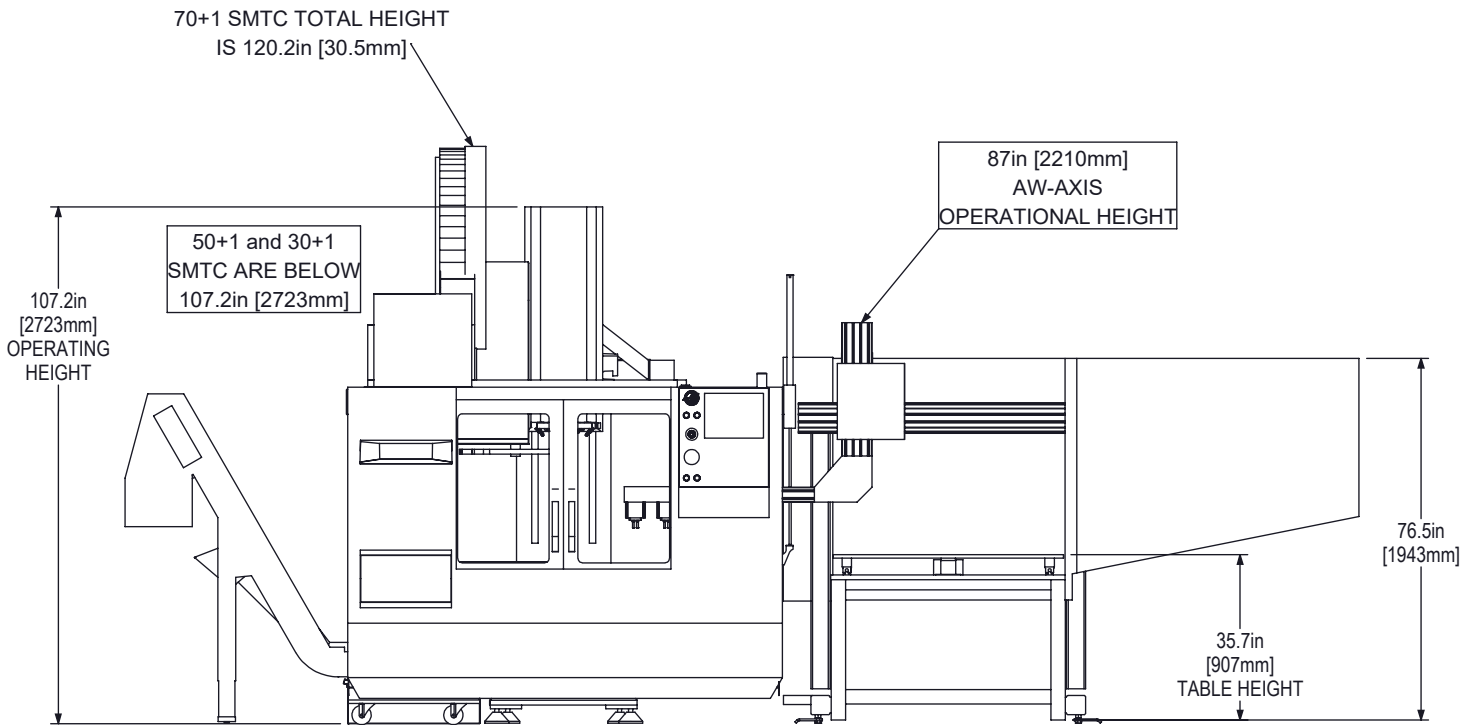


VF-2(SSYT) + APL WITH NO FENCE

TOP VIEW



FRONT VIEW

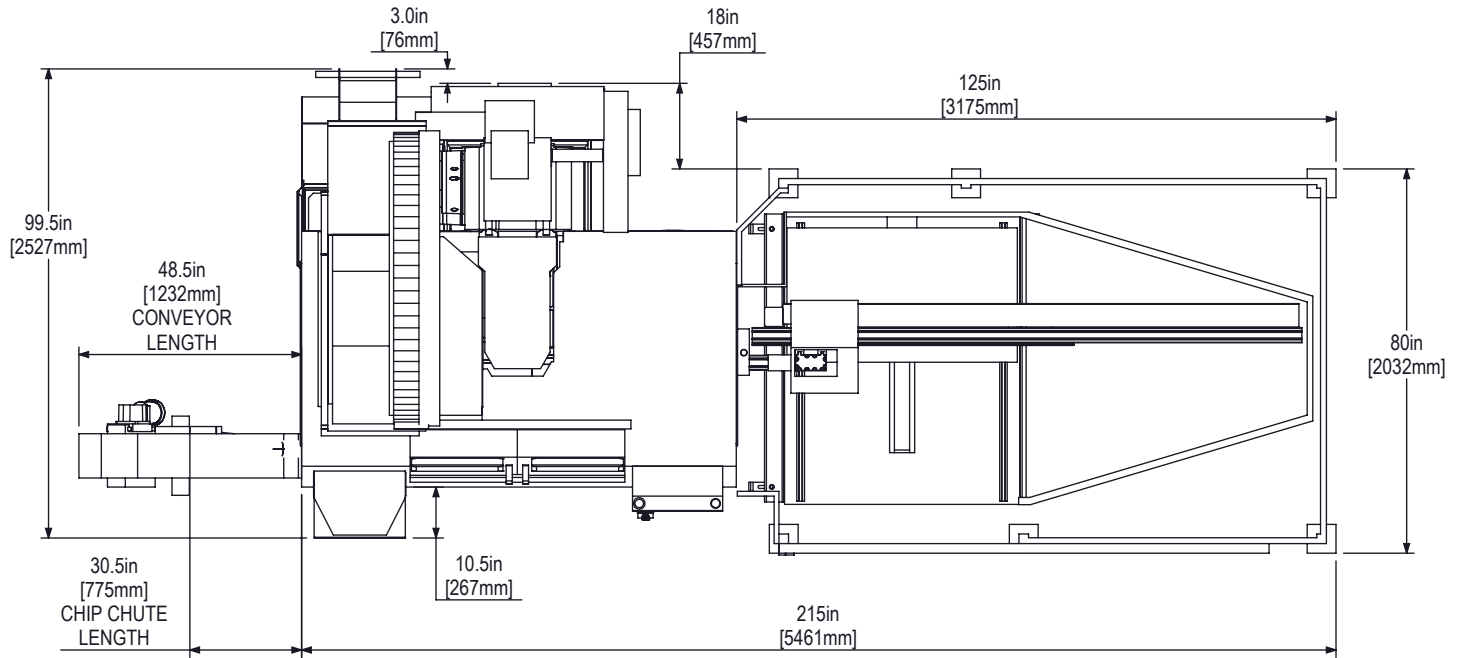


REFER TO VF-2YT(SSYT) LAYOUT DRAWING FOR MORE DIMENSIONAL DETAILS

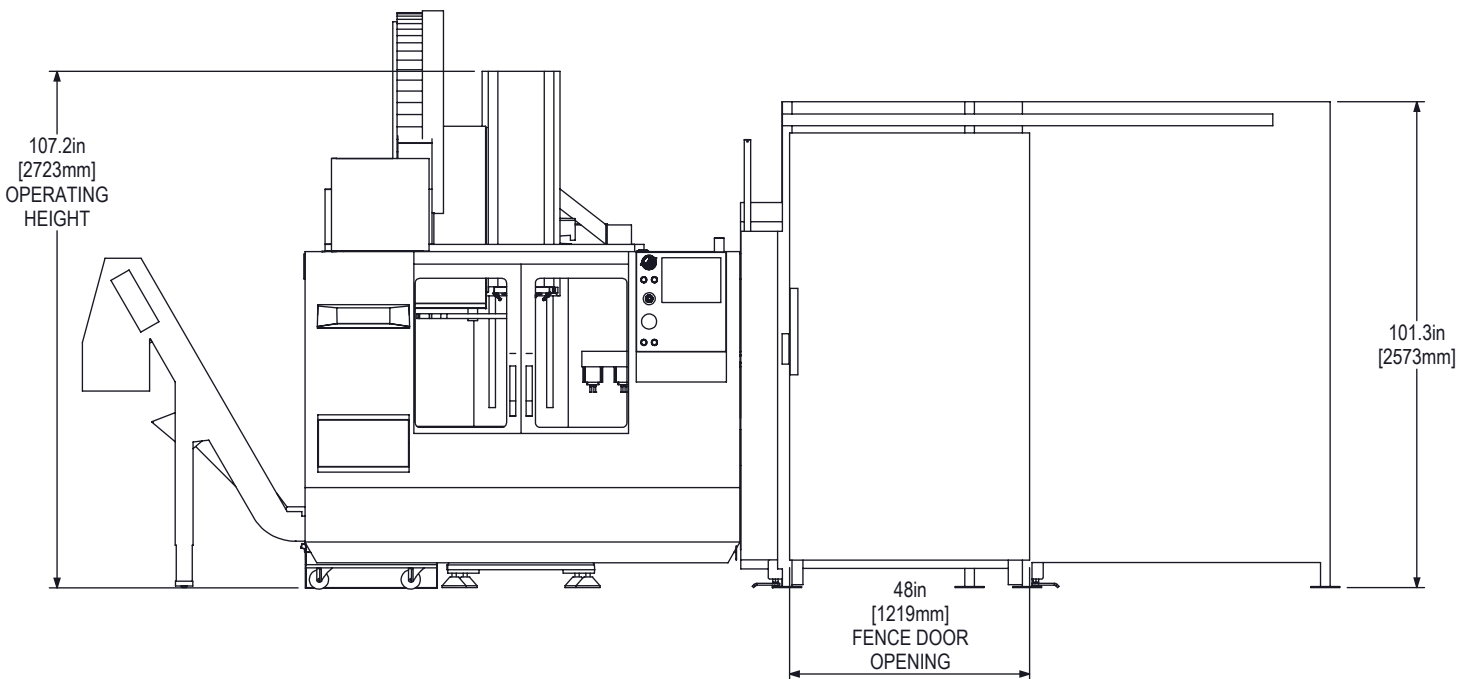


VF-2YT(SSYT) + APL WITH FENCE

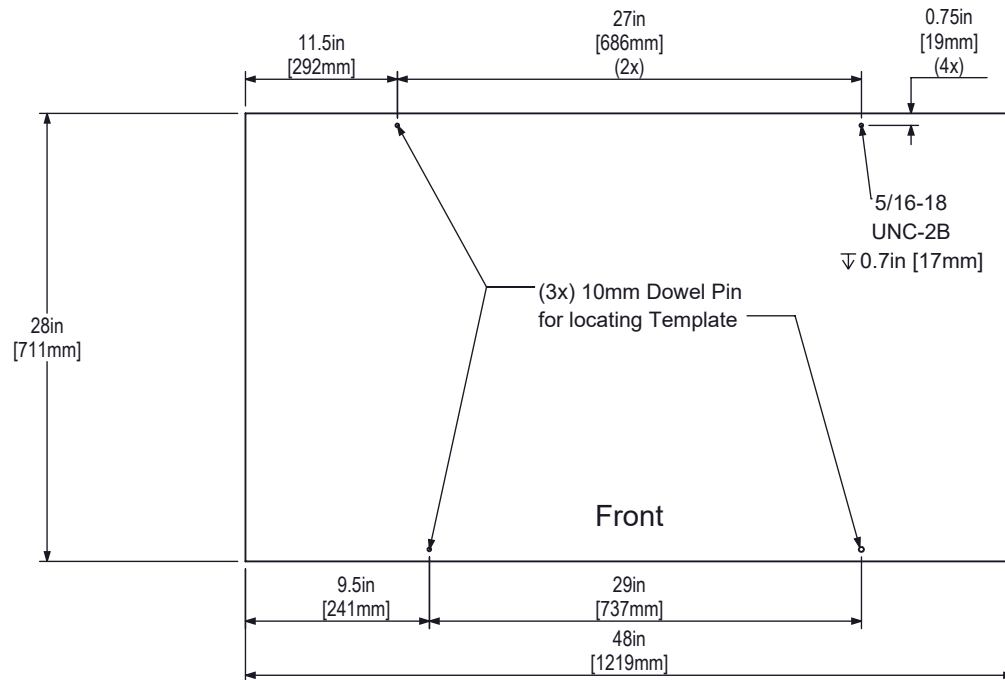
TOP VIEW



FRONT VIEW



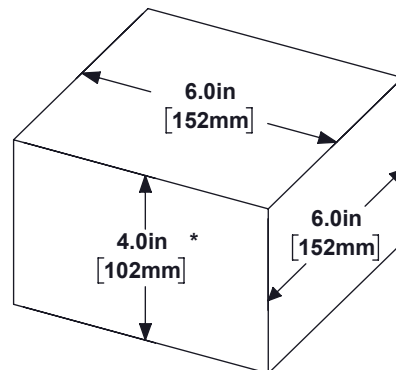
REFER TO VF-2YT(SSYT) LAYOUT DRAWING FOR MORE DIMENSIONAL DETAILS



To accommodate the large variation in size and shape of material that can be loaded by the APL, use the following guidelines and table dimensions to make your own part specific templates

1. Allow adequate space between rows and columns for gripper clearance
2. All rows must have equal spacing
3. All columns must have equal spacing (but can be different than row spacing)
4. Use dowel pins and/or screw holes to fix template to table

MAXIMUM PART SIZE



MAXIMUM PART WEIGHT
10lb [4.5kg]
Per Gripper

*Maximum height assumes factory included Grippers.
Using other workholding will change the maximum part height