

8

7

6

5

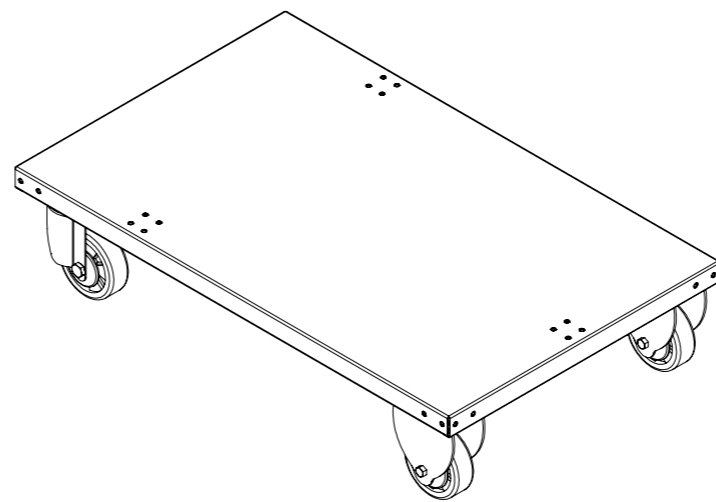
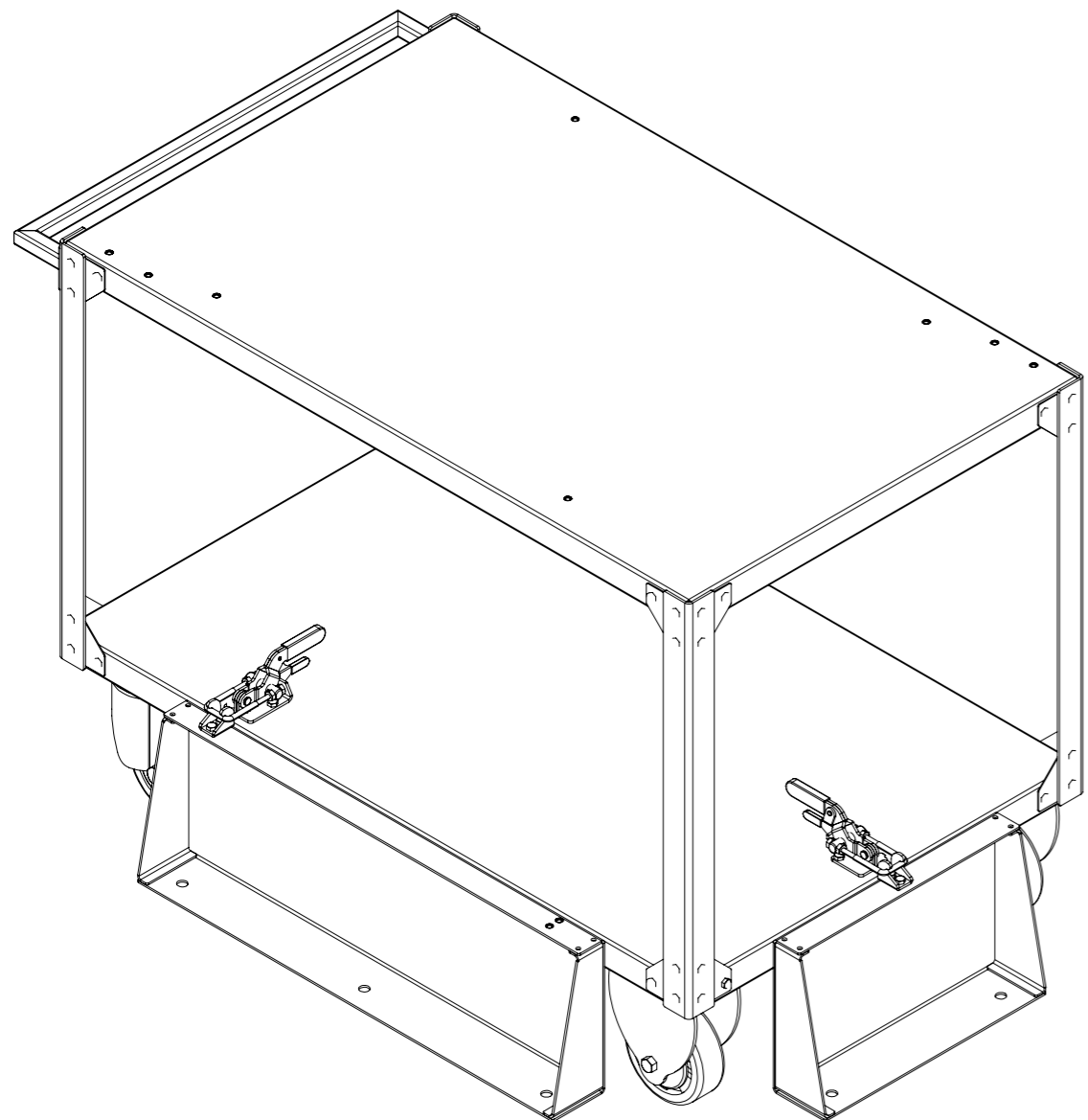
4

3

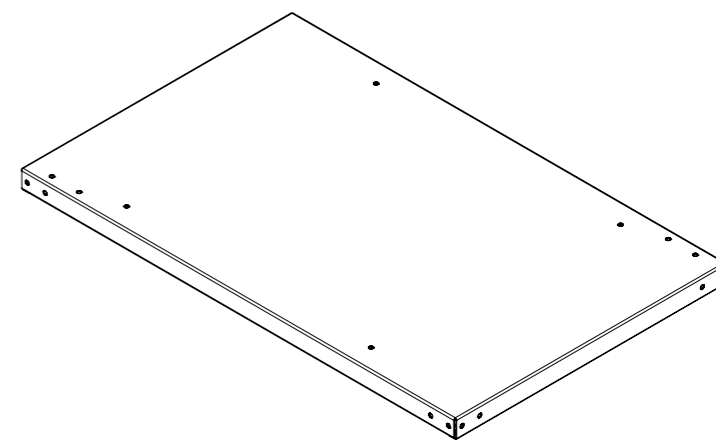
2

1

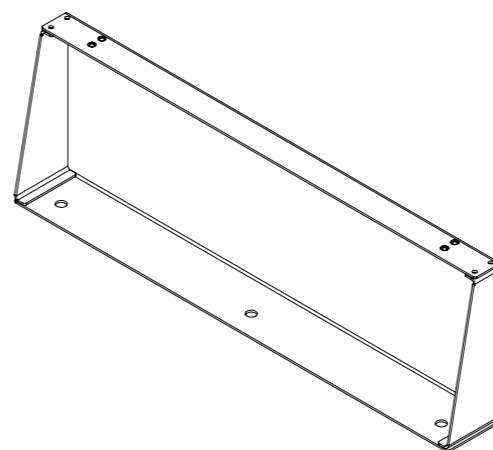
INSTALLATION INSTRUCTION FOR CART TABLE 2000 LBS



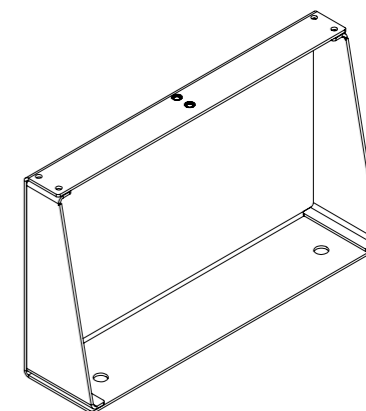
BOTTOM SHELF ASSLY  
(01 NO)



TOP SHELF ASSLY  
(01 NO)



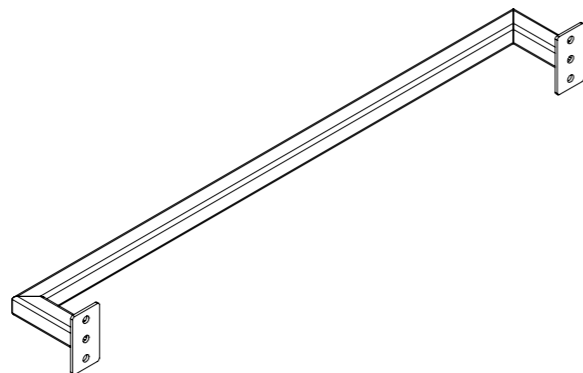
SIDE TRAY ASSLY  
(01 NO)



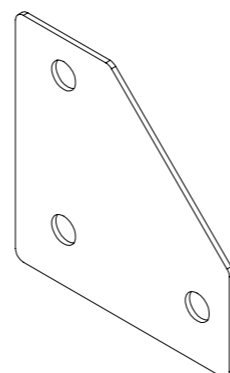
FRONT TRAY ASSLY  
(01 NO)



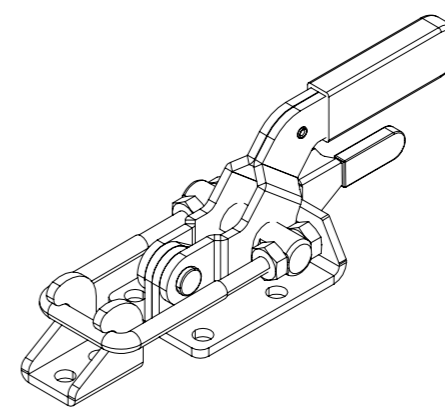
UPRIGHT  
(04 NOS)



HANDLE ASSLY  
(01 NO)



CORNER PLATE  
(16 NOS)



CLAMP TOGGLE MODEL NO. - PAN - 331  
TRIG (8.80 KN)(MS) (02 NOS)

HARDWARE  
HEX BOLT M08 X 20 - 60 NOS  
HEX FLANGE NUT M08 - 16 NOS

CART TABLE 2000 LBS PARTS LIST

8

7

6

5

4

3

2

1

F

E

D

C

B

A

F

E

D

C

B

A

8

7

6

5

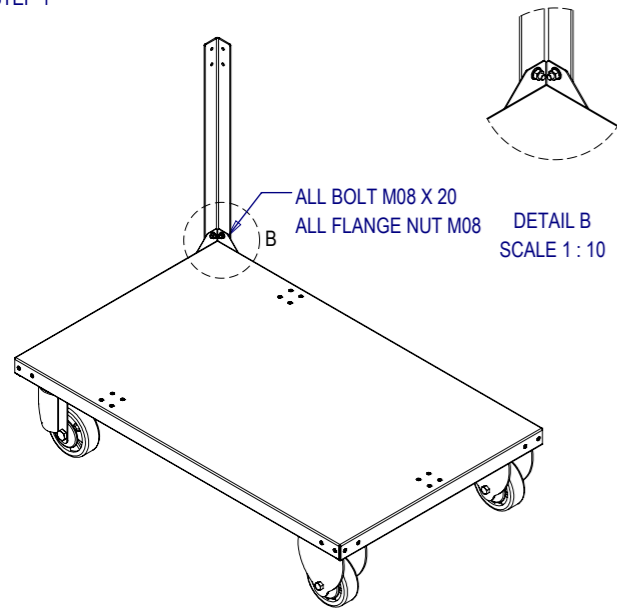
4

3

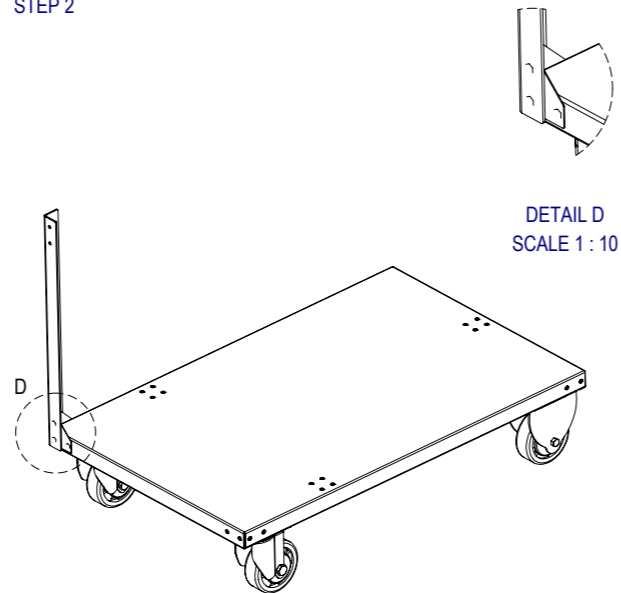
2

1

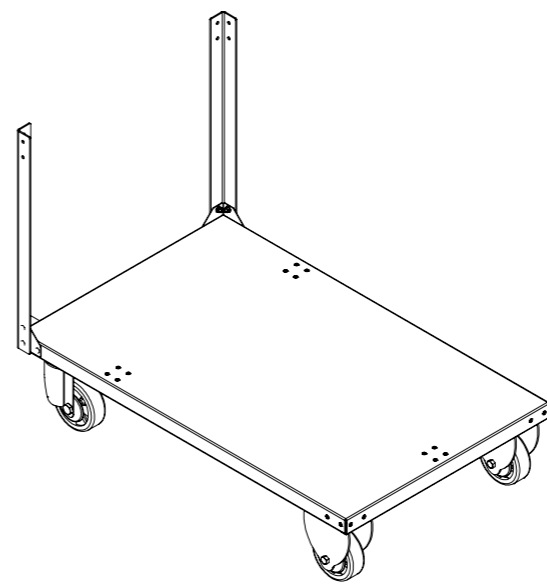
STEP 1



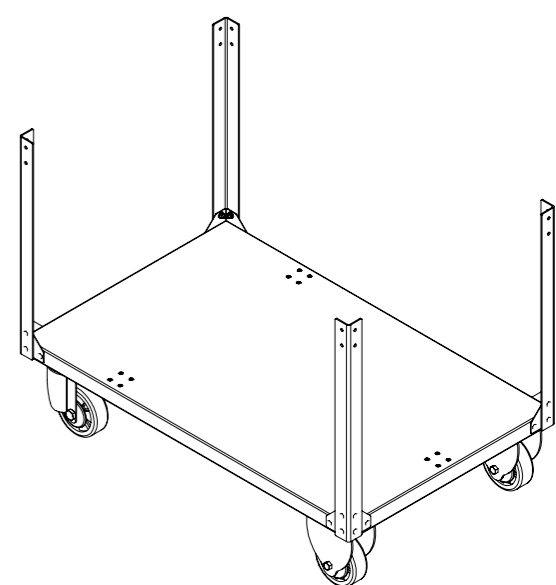
STEP 2



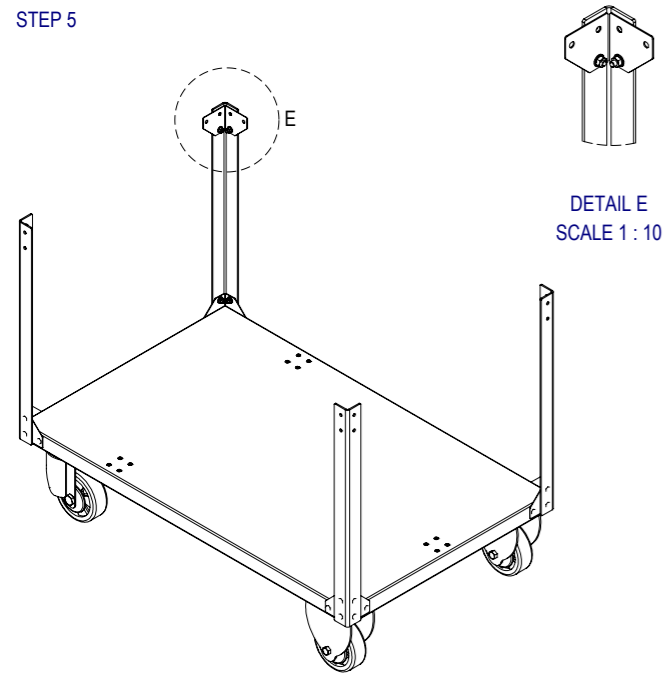
STEP 3



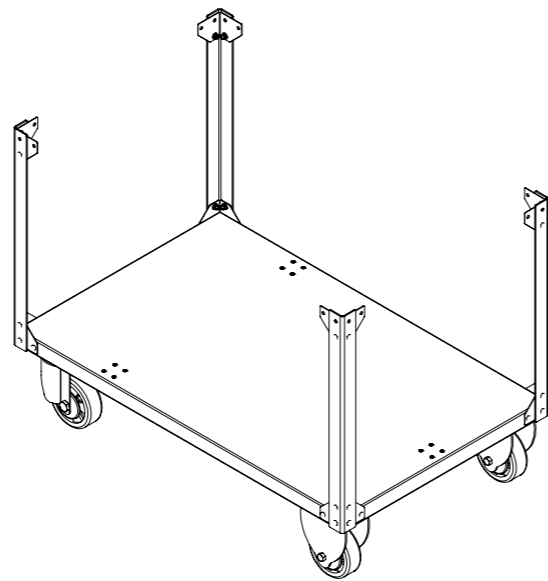
STEP 4



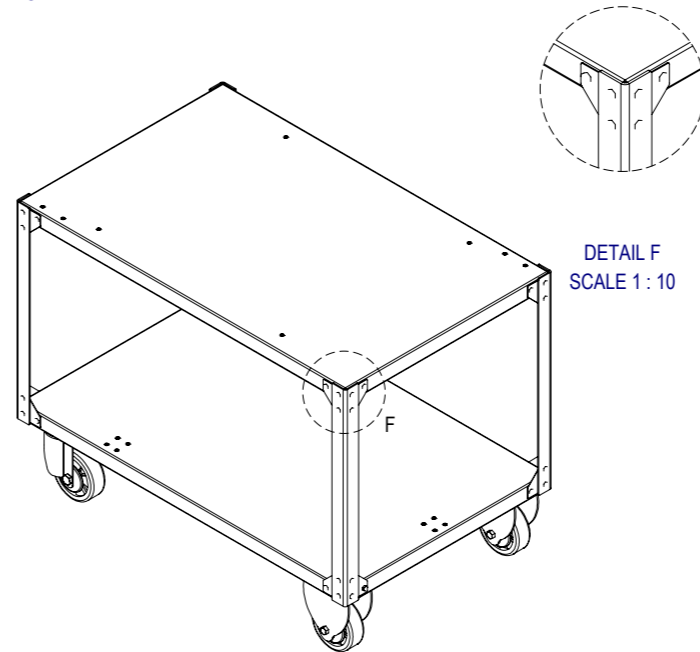
STEP 5



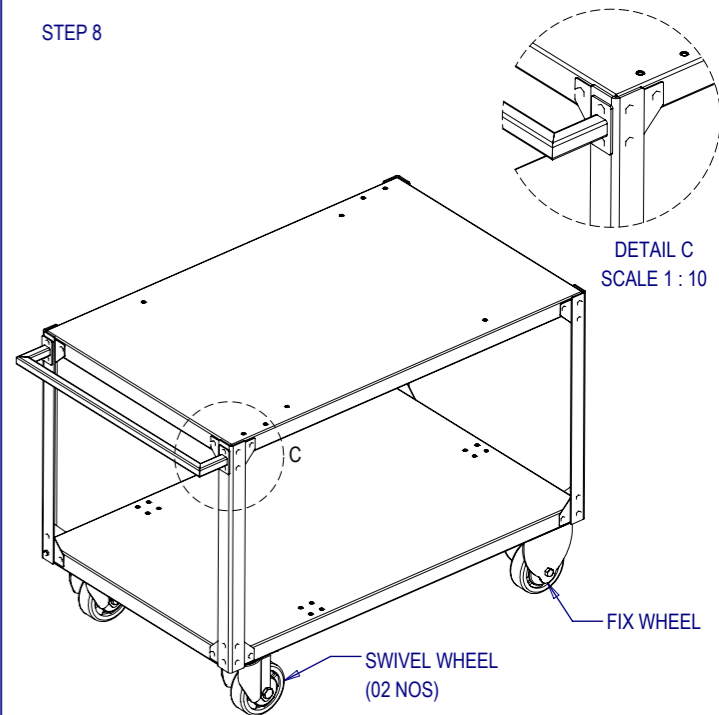
STEP 6



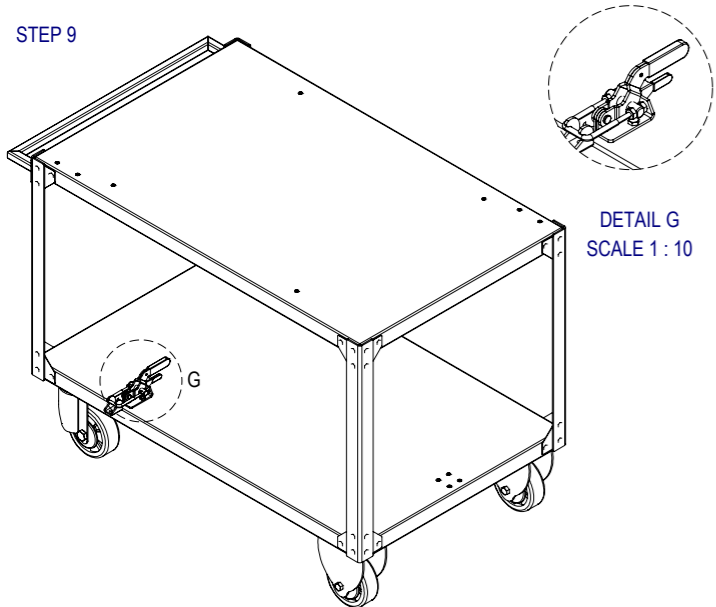
STEP 7



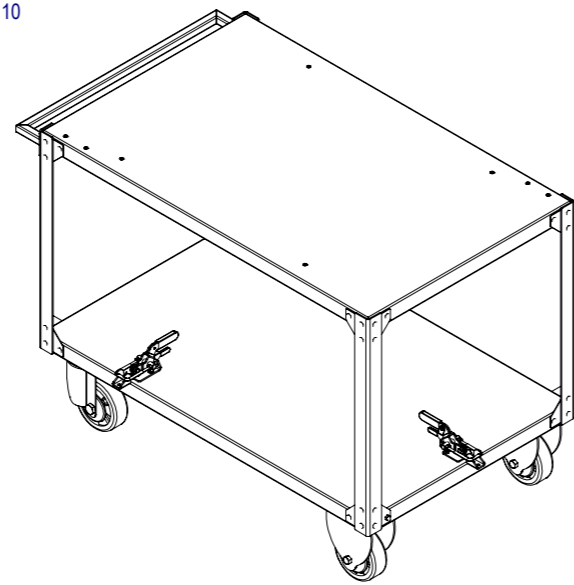
STEP 8



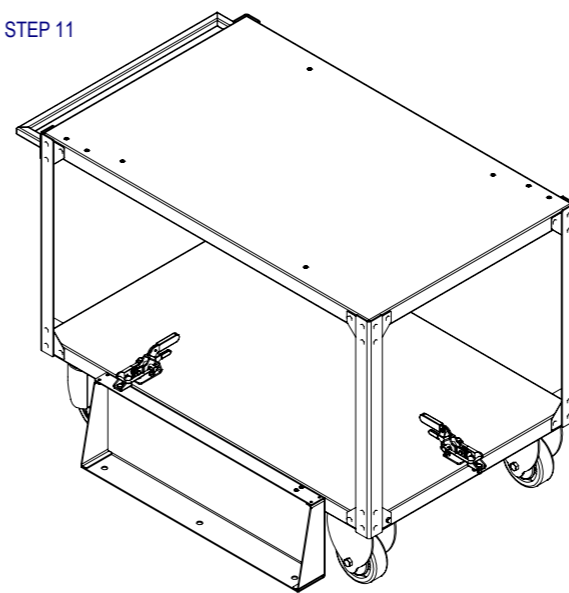
STEP 9



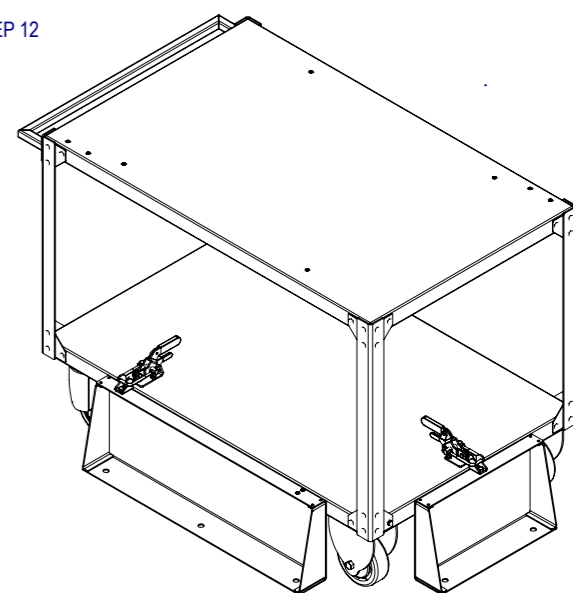
STEP 10



STEP 11



STEP 12



8

7

6

5

4

3

2

1

F

F

E

E

D

D

C

C

B

B

A

A